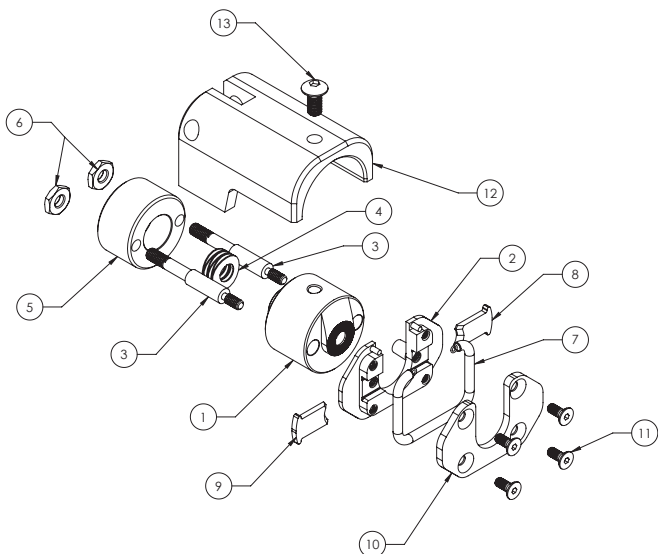


# RCBS®

## Trim Pro—2 Case Holder Conversion



### PRODUCT INSTRUCTIONS



ITEM #	PART #	DESCRIPTION	QTY.
1	7786124	Compression Pin	1
2	7786114	Case Holder Shelf	1
3	7786125	Actuating Rod	2
4	7186131	Belleville Washer	6
5	7786123	Spring Holder	1
6	7109603	10-32 Hex Nut	2
7	7186266	APS HPT Case Pawl Spring	1
8	7784138	APS HPT Case Holder Left	1
9	7784139	APS HPT Case Holder Right	1
10	7186263	APS HPT Case Holder Cap	1
11	7186157	5-40 x 5/16L FHCS	4
12	7786121	Handle Support	1
13	7186144	10-32 x 3/8L BHCS	1

#### Got a question?

Customer Service • 1-800-533-5000 (US or Canada)

or visit [www.rcbs.com](http://www.rcbs.com)

RCBS 605 • Oro Dam Blvd. East • Oroville, CA 95965



**WARNING!** Before using this product, read and follow these instructions carefully. Failure to do so could result in serious injury or death, or property damage.

If you have any questions while assembling or operating this product,  
call us at 1-800-533-5000 (U.S. or Canada)  
Or visit [www.rcbs.com](http://www.rcbs.com)

This manual contains important safety and operating information. Keep this as a permanent part of your reloading equipment. If lost, contact us for a replacement.

#### LIFETIME LIMITED WARRANTY

Your Trim Pro—2 Case Holder Conversion is warranted to be free from defects in material or workmanship for lifetime of the original consumer purchaser. All RCBS products are intended for non-commercial use by hobbyists. Any other use of these products will void the warranty. Should you believe that your Trim Pro—2 Case Holder Conversion is defective in material or workmanship, you must return it to RCBS postage paid for evaluation. If defective, the product will be repaired or replaced at RCBS' option, at no charge. Send a dated proof of purchase to RCBS for return shipping and handling, along with the Trim Pro—2 Case Holder Conversion to:

RCBS • 605 Oro Dam Blvd East • Oroville, California 95965

Warranty services cannot be provided without meeting the above requirements.

THIS LIFETIME LIMITED WARRANTY DOES NOT COVER DEFECTS OR DAMAGE RESULTING FROM: CARELESSNESS, MISUSE, COMMERCIAL USE, ABUSE, IMPROPER INSTALLATION, MODIFICATION, OR NORMAL WEAR AND TEAR. THE IMPLIED WARRANTIES OF MERCHANTABILITY AND FITNESS FOR A PARTICULAR PURPOSE ARE LIMITED TO THE DURATION OF THIS LIFETIME LIMITED WARRANTY. RCBS IS NOT LIABLE FOR DAMAGES IN EXCESS OF THE PURCHASE PRICE OF THE PRODUCT AND UNDER NO CIRCUMSTANCES SHALL RCBS BE LIABLE FOR CONSEQUENTIAL OR INCIDENTAL DAMAGES. HOWEVER, SOME STATES DO NOT ALLOW LIMITATIONS ON INCIDENTAL, OR CONSEQUENTIAL DAMAGES, SO THE ABOVE LIMITATION OR EXCLUSION MAY NOT APPLY TO YOU.

The above warranty provides the sole and exclusive warranty available to the customer in the event of a defect in material or workmanship in the reloading product. This warranty gives you specific legal rights, and you may also have other rights which vary from State to State.

7200492/0523

## SAFETY

Reloading is an enjoyable and rewarding hobby that can be conducted safely. But, as with any hobby, carelessness or negligence can make reloading hazardous. This product has been designed from the beginning with the user's safety in mind. When reloading, safety rules must be followed. By observing these rules, the chance of a hazardous occurrence causing personal injury or property damage is minimized.

## GENERAL

- Use all equipment as the manufacturer recommends. Study the instructions carefully and become thoroughly familiar with the operation of the product. If you do not have written instructions, request a copy from the equipment manufacturer.
- Do not take short cuts. Attempting to bypass established procedures is an invitation to an accident.
- Observe "good housekeeping" in the reloading area. Keep tools and components neat, clean and orderly. Promptly and completely clean up primer and powder spills.
- Reload only when you can give your undivided attention. Do not reload when fatigued or ill, or under the influence of medications or alcohol.
- Develop a reloading routine to avoid mistakes which may prove hazardous. Do not rush - load at a leisurely pace.
- Always wear adequate eye protection to protect your eyes from flying particles. You assume unnecessary risk when reloading without wearing safety glasses.

## LOADING DATA

- Use only laboratory tested reloading data. We highly recommend the current Speer Reloading Manual.

**!** OBSERVE ALL WARNINGS ABOUT THE USE OF MAXIMUM LISTED LOADS.

**!** WARNING/ CAUTION

## RECORD KEEPING

- Keep complete records of reloads. Apply a descriptive label to each box showing the date produced, and the primer, powder and bullet used. Labels for this purpose are packed with Speer bullets.
- Never attempt to guess at the identity of your ammunition.

*Because RCBS has no control over the choice of components, the manner in which they are assembled, the use of this product, or the firearms in which the resulting ammunition may be used, we assume no responsibility, expressed or implied, for the use of ammunition reloaded with this product.*

## USE

The RCBS Trim Pro-2 Case Holder Conversion is designed to replace the standard Case Holder on your Trim Pro Case Trimmer (Manual or Power Unit) to eliminate the need for Trim Pro Shell Holders. This unit features spring-loaded jaws that will accommodate case rim diameters from .250" to .625" ± .005".

NOTE: Cases with rim diameters larger than .625" must be trimmed on the 90352 High Capacity Trimmer. Not for use with Rotary Case Trimmer or Rotary Case Trimmer-2.

After trimming a case, chamfer/ debur the case mouth inside and out with an RCBS Debur Tool (sold separately). An optional 3-Way Cutter Tool (sold separately) can be used on the Trim Pro unit to combine trimming and chamfering the inside and outside into one easy operation.

Mounting options for your Trim Pro include using the RCBS Trim Pro Case Trimmer Stand (#90360) or the RCBS Accessory Base Plate-2 (item #09280), both sold separately. To order either or find out more information, contact RCBS or visit our website [www.rcbs.com](http://www.rcbs.com).

**!** CAUTION It is critical for safety that cases not exceed the maximum specified case length. A case that is too long can enter the throat of the firearm when chambered. If this happens, the case cannot release the bullet properly upon firing, resulting in excessive pressure increase.

If you determine that any of your cases need to be trimmed, it is recommended to trim all cases in the lot so they are all equal length. This will provide better repeatability in your ammo's performance.

## INSTALLATION

Remove the Case Holder Handle by pulling the Lever Pin out (Photo 1). Dismount your existing Trim Pro Trimmer from your reloading bench or Mounting Plate, as needed.

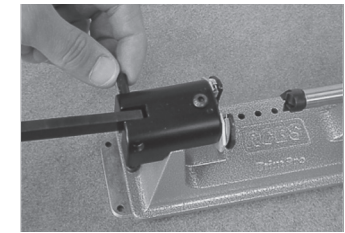


Photo 1. Disassemble Case Holder Handle

Flip your Trim Pro Trimmer Base over. Remove the Socket Head Cap Screw (SHCS) and lock washer from the inside of the old Case Holder using a 5/32" hex key wrench (Photo 2). Install your new Trim Pro-2 Case Holder Conversion in the same location using the same SHCS and lock washer. Ensure the assembly is centered on the Trimmer and tighten the SHCS firmly.



Photo 2. SHCS in Case Holder

Reattach the Case Holder Handle by inserting it into the slot on the Case Holder. Align the holes and insert the Lever Pin (Photo 1). Ensure the Lever Pin is fully engaging both sides of the slot in the Case Holder.

## FUNCTION

Load a resized case into the Universal Case Holder by pushing down and holding the Case Holder Lever with one hand, while inserting the case base with the other hand (Photo 3). Ensure the case base is flush with the Case Holder Knurl Face (Photo 4). The Case Holder has two spring-loaded 'fingers' that engage the Case's Extractor Groove/ Rim.

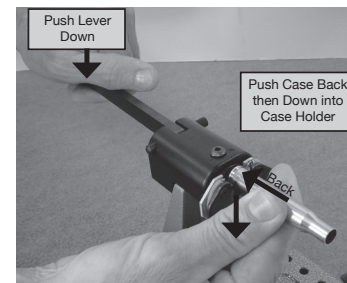


Photo 3. Inserting Case into Universal Holder



Photo 4. Case Holder 'Fingers'

Proceed to trim your case as you normally would.

## MAINTENANCE

Occasionally clean your Trim Pro-2 Case Holder Conversion of brass shavings and debris to keep it operating smoothly.

Lightly lubricate your trimmer after trimming approximately 300 cases or before long periods of storage. Use a light-weight multi-purpose grease at the following location (Photo 5).

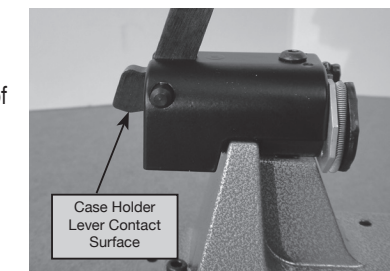


Photo 5. Lubricate Case Holder Lever