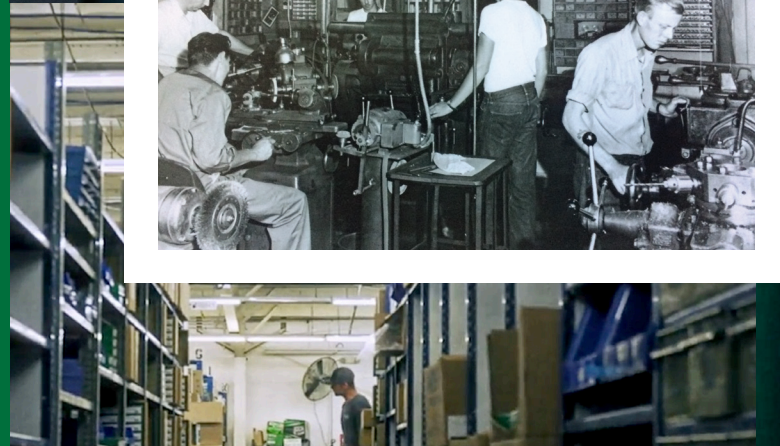
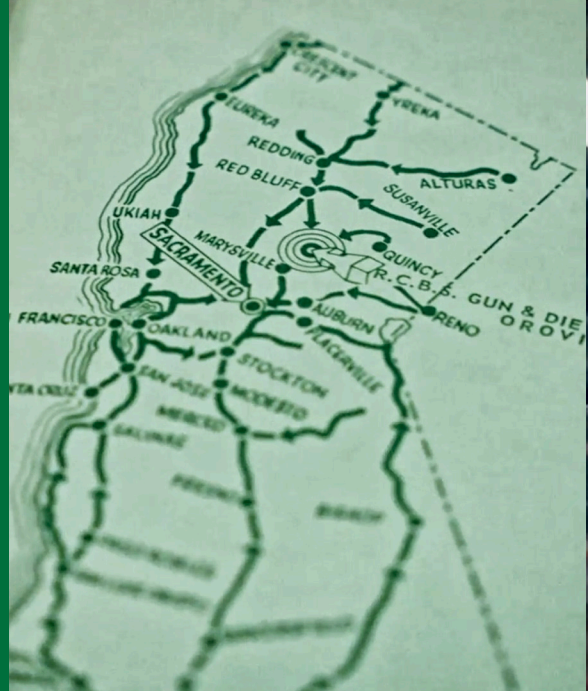


RCBS®

PRECISIONEERED RELOADING™ SINCE 1943

RCBS®

NEW PRODUCTS	4-5
SINGLE STAGE PRESSES	6-7
PROGRESSIVE PRESSES	8-9
PRESS ACCESSORIES	10-14
PRESS KITS	15-16
CASE PREP	17-25
CASE TRIM	26-28
PRIMING	29-31
SCALES + ACCESSORIES	32
POWDER HANDLING	34-41
SHELL HOLDERS	42-43
REFERENCE CHARTS	44-45
RELOADING DIES	46-55
BULLET CASTINGS	56-61
MISCELLANEOUS	61



FOR FULL WARRANTY DETAILS VISIT [RCBS.COM/WARRANTY](https://rcbs.com/warranty)



RCBS RELOADED

RCBS has dedicated itself to the craft of reloading ammunition since its founding by Fred T. Huntington in 1943. Starting with one simple bullet-swaging die, the company has grown into the industry's leading reloading equipment manufacturer, with RCBS tools a mainstay on the bench of every handloader. RCBS's state-of-the-art products are backed by the company's leading reputation, longstanding quality, and customer service guarantee.

Now again family owned, RCBS is reloading to make more tools, create new and better products and help more people enjoy handloading. A brand of Hodgdon Powder Company, RCBS still proudly manufactures reloading tools in Oroville, California. To learn more, visit www.RCBS.com.



HERE'S THE LATEST FROM RCBS

MATCHMASTER™

MATCHMASTER SEATER DIES

NEW ADDITIONAL SEATER DIE SIZES NOW AVAILABLE

Twelve new MatchMaster Seater Die sizes are now available for a host of cartridges. The pinnacle of RCBS dies, those seeking ultimate bullet seating precision choose MatchMaster Seater Dies.

MatchMaster Seater Dies:

.222 REMINGTON	10940
6MM REMINGTON	11540
.257 ROBERTS	12540
6.5MM GRENDDEL	18440
6.8MM WESTERN	28240
7X57 MAUSER	13840
.280 REMINGTON	14040
.280 ACKLEY IMPROVED	17040
.28 NOSLER	27440
300 AAC BLACKOUT	22440
7.62MM X 39	35040
.338 WINCHESTER	16340

See page 48



NEW

UPM 3 COMPETITION POWDER MEASURE

The UPM-3 Competition Powder Measure accurately meters, by volume, all types of powder with extreme accuracy. RCBS's highest quality mechanical powder measure utilizes one cylinder for both rifle and pistol. The one cylinder can meter from .5 to 100 grains of powder, depending on powder type. The unit combines the proven Uniflow Powder Measure, with a powder baffle and a Micrometer Adjustment Screw. The Micrometer Adjustment Screw allows precise adjustments to the metered charge and lets reloaders record the number for future reference. The handle can be positioned on the right or left side. The UPM-3 Competition Powder Measure is best used with an RCBS powder scale for setting the original charge and checking charges.

9032 UPM 3 COMPETITION POWDER MEASURE

See page 37





NEW

MATCHMASTER™

MATCHMASTER POWDER FUNNEL KIT

The Matchmaster Powder Funnel is the fastest funnel on the market – bar none. RCBS’s patent-pending system of precision adapters ensures any smokeless powder flawlessly and quickly flows into the case mouth. An anti-bridging design gives super-fast flow rates, while the high-strength aluminum funnel’s anti-stick coating prevents powder from getting stuck inside. Available as a stand-alone funnel, individual 17 – 50 cal. adapters, or as a convenient kit with carry case, the MatchMaster Powder Funnel helps speed up your reloading without a grain of powder left behind.

- Fastest funnel available – aluminum or plastic
- Patent-pending powder flow technology
- Anti-stick coating
- System of precision-fit adapters
- Available as funnel +6 adapter kit, individual funnel, individual adapters, drop tube
- Limited lifetime warranty – backed by reloading’s best customer service
- Made in the USA

- 98820 MATCHMASTER POWDER FUNNEL KIT
- 98821 MATCHMASTER POWDER FUNNEL
- 98822 MATCHMASTER POWDER FUNNEL ADAPTER 17
- 98823 MATCHMASTER POWDER FUNNEL ADAPTER 20
- 98824 MATCHMASTER POWDER FUNNEL ADAPTER 22
- 98825 MATCHMASTER POWDER FUNNEL ADAPTER 6MM
- 98826 MATCHMASTER POWDER FUNNEL ADAPTER 6.5MM
- 98827 MATCHMASTER POWDER FUNNEL ADAPTER 27
- 98828 MATCHMASTER POWDER FUNNEL ADAPTER 7MM
- 98829 MATCHMASTER POWDER FUNNEL ADAPTER 30
- 98830 MATCHMASTER POWDER FUNNEL ADAPTER 338
- 98831 MATCHMASTER POWDER FUNNEL ADAPTER 375
- 98832 MATCHMASTER POWDER FUNNEL ADAPTER 416
- 98833 MATCHMASTER POWDER FUNNEL ADAPTER 50
- 98834 MATCHMASTER POWDER FUNNEL ADAPTER PISTOL
- 98835 MATCHMASTER POWDER FUNNEL DROP TUBE

See page 38

SINGLE STAGE PRESSES

A



B



A ROCK CHUCKER® SUPREME PRESS

The Rock Chucker® Supreme press loading window is a spacious 4.25" to allow easy loading of today's longer cartridge designs. This press has easy operation, ambidextrous handle, outstanding strength and versatility. The Rock Chucker Supreme is ideal for the beginner and pro alike.

- Gold Standard of single-stage presses
- Standard 7/8"-14 thread dies or 1-1/4"-12 dies
- On press priming
- Heavy-duty cast iron construction

- 9356 ROCK CHUCKER SUPREME PRESS
- 9552 PRIMER PLUG, SLEEVE & SPRING (LARGE)
- 9553 PRIMER PLUG, SLEEVE & SPRING (SMALL)
- 9358 ROCK CHUCKER SUPREME AUTO PRIME

B SUMMIT™ SINGLE STAGE RELOADING PRESS

Unlike other presses, the Summit™ operates on top of the bench; the case does not move, the reloading die comes down to the case. Its all-steel linkage and cast iron frame provide the stability and ruggedness all reloaders need. The ambidextrous design allows unprecedented access to your cases, and you can quickly change dies. The Summit also offers compound leverage, a massive 2" diameter ram, full frontal access, a press adapter bushing, zerkl fitting for lubrication, spent primer catcher and 4.5" operating window for convenient access. It accepts bushings for 1" die bodies and is made in the USA.

- Engineered for precision handloading
- Standard 7/8"-14 thread dies or 1-1/4"-12 dies
- Mount anywhere on your bench
- Cast-iron frame, solid steel ram and linkage

- 9290 SUMMIT SINGLE STAGE RELOADING PRESS
- 9291 SHORT HANDLE-SUMMIT RELOADING PRESS
- 9294 ARBOR DIE CONVERSION KIT

SINGLE STAGE PRESSES

C



D



C PARTNER PRESS

Just starting out? The Partner™ Press is easy to use and incredibly durable. Our least expensive press offers big performance in a compact package. It's also perfect as a second press for different operations or a portable press for use at the range. 4" Window, 3.5" Stroke.

- **Lightweight & portable**
- **Affordable option**
- **Die-cast aluminum frame**

87460 PARTNER PRESS

D AMMOMASTER® —2 SINGLE STAGE PRESS

The AmmoMaster—2 single stage press has longer support columns and larger toggle block found on our AmmoMaster .50 BMG press. While still set up to use standard 7/8"-14 thread dies and standard shell holders to load most any pistol or rifle caliber, the addition of the .50 BMG 1-1/2" Die Kit (88705) will allow you to load from .25 ACP to .50 BMG.

For original AmmoMaster owners wishing to load .50 BMG, two kits are necessary. The .50 BMG 1-1/2" Press Conversion Kit and the .50 BMG 1-1/2" Die Kit.

The Press conversion kit contains the larger toggle block and support columns and the Die Kit contains a Full Length Size Die, Roll Crimp Seat Die, Trim Die, .50 BMG Shell Holder and .50 BMG Ram Priming Unit.

- **Load the smallest to very largest cartridges**
- **Big power, little effort**
- **Modular 1.5" diameter ram**
- **Cast Aluminum durable construction**

88703 AMMOMASTER—2 SINGLE STAGE PRESS

88705 .50 BMG 1-1/2" DIE KIT

88709 .50 BMG 1-1/2" PRESS CONVERSION KIT (FOR 88701 AMMOMASTER)

88772 .50 BMG RAM PRIMING UNIT

88746 .50 BMG SHELL HOLDER

PROGRESSIVE PRESSES



A

A PRO CHUCKER 7 PROGRESSIVE RELOADING PRESS

The first seven-station auto-indexing press on the market, the RCBS Pro Chucker 7 features automatic indexing for maximum production, with a load rate of approximately 600 rounds per hour. The quick-change die plate allows fast caliber change over for even greater efficiency. Standard primer pick up tubes are used with the safety shielded priming system. Spent primers are efficiently dropped from the bottom of the press to be captured in a trash receptacle. The larger powder capacity Quick Change powder measure reduces the number of times you have to fill the powder hopper. The Quick Change drain tube allows you to drain the powder measure without removing it from the press and the QC metering assemblies allow shortened set up times when switching powders. Seven stations allows you to progressive load any way you want. You can seat bullets and crimp separately. Use a pistol bullet feeder but also use a Lock-Out or Powder Checker die. With seven stations, you can install them all.

- Technologically advanced progressive press
- High rate of loading, 600 rounds/hour+
- Quick-change die plate for fast caliber change
- 4.625" operating window
- Cast aluminum durable construction

88911 PRO CHUCKER 7 PROGRESSIVE PRESS



B TURRET PRESS

Simple operation—no complex or automated processes. You have complete control over every reloading step. May be operated in progressive or single-stage mode.

In the progressive mode, output can be increased from 50 to 200 rounds per hour. Or, if preferred, the press can be used as a single-stage press and load cases in the batch mode.

Rugged, cast iron frame, toggle block and turret head. Heavy-duty construction to minimize deflection. Detent on Turret Head for positive alignment. Standard 7/8"-14 threads for most popular reloading dies and accessories. Six-Station Turret Head allows many combinations in the mounting sequence of dies and powder measure permits two or more calibers to be set up at the same time. Turret Head held in place by one bolt for quick, easy changeovers. Turret Pin Assembly (provided for turret head removal and installation) and Ball Handle Assembly may be positioned for right or left-hand use. Standard Shell Holders slip into press ram and are securely held in place by a clip spring.

Primer Plugs and Sleeves are supplied for seating large and small primers. Primers are seated away from stacked primers. Safety tube included.

The Primer Catcher eliminates spent primers on floor—snaps off for easy emptying. Baked powder coat finish for quick, easy cleaning, chip and fade resistant. 4.75" Window, 4.5" Stroke.

- Interchangeable turret system for quick operation or caliber changes
- 6-station changeable turret head
- Large operating window, 4.75"
- Cast iron frame, toggle block and turret head

88901 TURRET PRESS

PRESS ACCESSORIES



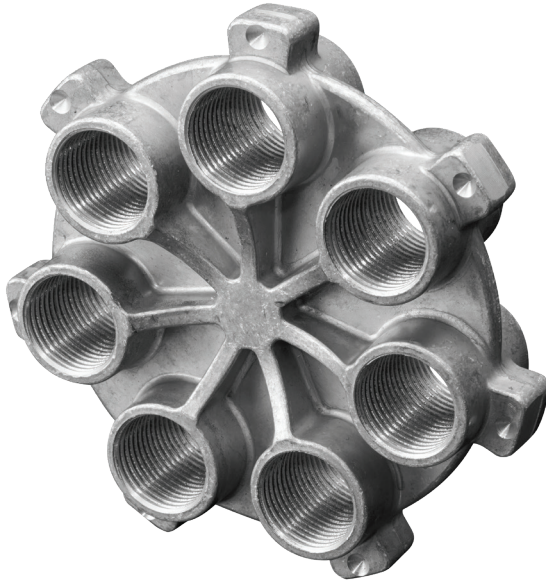
See Reference Chart on page 42 to determine the Shell Holder number required for caliber.

PRO CHUCKER 7 SHELL PLATE

Plate Size	Part Number
Number 2	88950
Number 3	88951
Number 4	88952
Number 6	88953
Number 10	88954
Number 11	88955
Number 12	88956
Number 13	88957
Number 14	88958
Number 16	88959
Number 17	88960
Number 18	88961
Number 19	88962
Number 20	88963
Number 23	88964
Number 27	88965
Number 30	88966
Number 32	88967
Number 35	88968
Number 38	88969
Number 39	88970
Number 43	88971
Number 44	88972
Number 45	88973
Number 48	88974

PRESS ACCESSORIES

B



C



B PRO CHUCKER 7 DIE PLATE

Change calibers quickly and easily by leaving the reloading dies set up for a caliber-specific plate.

88917 PRO CHUCKER 7 DIE PLATE

C POWDER DIE

The Powder Die allows the Case Activated Powder Measure (CAPM) to be quickly moved from one Die Plate to another.

98912 POWDER DIE

D



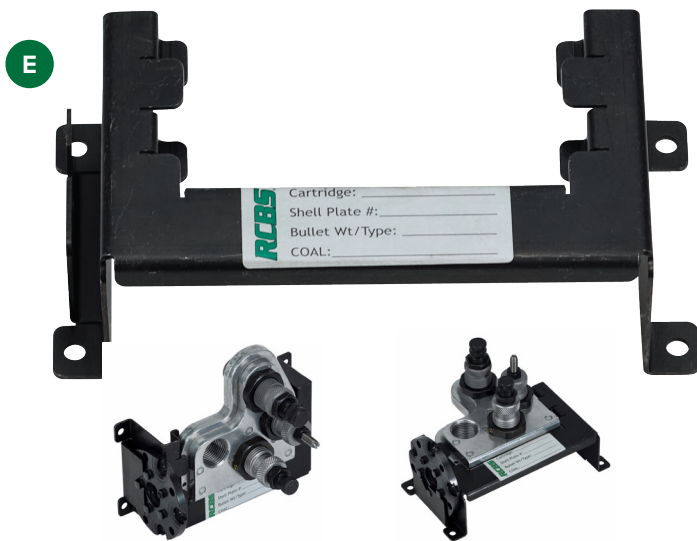
D TURRET HEAD

Makes changing calibers quick and simple. Leave the dies set up in the Turret Head and change the Head—one bolt does the trick! Six stations with standard 7/8"-14 threads.

Dies not included.

88902 TURRET HEAD

PRESS ACCESSORIES



E DIE PLATE/SHELL PLATE RACK

Keep your Pro 2000® die plates and five station shell plates organized. This handy rack can be mounted horizontally on your bench or vertically on the wall. The stamped steel rack securely holds your preset die plate and a side slot keeps the five station shell plate in place. An identification label is also included.

88881 DIE PLATE/SHELL PLATE RACK

F POW'R PUNCH DECAP ROD

For use with pistol calibers in Progressive Presses. The decap rod has a spring-loaded decapping pin to ensure the spent primer is always fully ejected from the primer pocket. Eliminates indexing problems with progressive presses caused by the spent primer jamming the shell plate. Works in all RCBS® pistol sizer dies. RCBS pistol sizing dies equipped with the Pow'r Punch Decap Rod Assembly will work in any brand progressive press that uses standard 7/8"-14 threaded dies.

9627 POW'R PUNCH DECAP ROD

CHAMBER/CARTRIDGE LENGTH GAUGES

G CHAMBER/CARTRIDGE LENGTH GAUGES

RCBS Chamber/Cartridge gauges do double duty. Drop the handloaded round in to check both chambering as well as cartridge length. Limited Lifetime Warranty.



88269	CHAMBER/CARTRIDGE GAUGE .38 SPECIAL
88270	CHAMBER/CARTRIDGE GAUGE 9MM LUGER
88272	CHAMBER/CARTRIDGE GAUGE .40 S&W
88273	CHAMBER/CARTRIDGE GAUGE .45 ACP
88274	CHAMBER/CARTRIDGE GAUGE .45 COLT
88275	CHAMBER/CARTRIDGE GAUGE 44 MAGNUM
88279	CHAMBER/CARTRIDGE GAUGE .308 WIN/7.62X51
88280	CHAMBER/CARTRIDGE GAUGE .223 REM/5.56X45
88282	CHAMBER/CARTRIDGE GAUGE .300 AAC BLACKOUT
88283	CHAMBER/CARTRIDGE GAUGE 6MM CREEDMOOR
88284	CHAMBER/CARTRIDGE GAUGE 243 WINCHESTER
88285	CHAMBER/CARTRIDGE GAUGE 6.5MM CREEDMOOR
88286	CHAMBER/CARTRIDGE GAUGE 30-06 SPRINGFIELD
88287	CHAMBER/CARTRIDGE GAUGE 300 WIN MAG

H



I



J



K



H POWDER CHECKER

A simple, effective way to visually check powder charges when you use a progressive press. The Powder Checker sits between the powder charging and bullet seating stations. Using a probe rod, it lets you visually confirm that the case is properly charged with powder before bullet seating. In addition to spotting a “no-charge” condition, the Powder Checker shows low and high charges too. Black oxide finish provides contrast for better visibility. For use with straight-wall or bottleneck rifle and pistol cases, .22 caliber and larger.

87590 POWDER CHECKER

K TUBE PISTOL BULLET FEEDER

These caliber specific tube fed Pistol Bullet feeders are designed to be used with any 7/8”-14 threaded progressive press. Each clear tube holds 20-25 bullets, depending on weight and profile. The Tube PBF places the bullet into the case mouth, for proper alignment, to be seated at the next station. Another added benefit is that it can be used with jacketed, plated, cast or swaged lead bullets. Increase load output up to 50%. Patent #8,707,845. Two bullet tubes are included with each unit, extra bullet tubes sold separately.

- Tube fed, allows use of jacketed, plated, cast or swaged lead bullets
- Compatible with any 7/8”-14 threaded press
- Increase load rate up to 50%
- RCBS Limited Lifetime Warranty

82355 TUBE PBF .380/9MM/.38-.357 (90-158-GRAIN)

82356 TUBE PBF .38/.357 (158-180-GRAIN)

82357 TUBE PBF .40 S&W/10MM

82358 TUBE PBF .45 ACP

82359 PBF TUBE .40/.45 (2 PACK)

82360 PBF TUBE .380/.357 MAGNUM (2 PACK)

I LOCK-OUT DIE

The Lock-Out Die detects a “no powder” or a “double charge” condition in the progressive reloading process. It locks up, halting the travel of the ram, alerting the reloader to the problem so the cause can be corrected. Will not let you continue without removing the improperly charged cartridge. For use with straight-wall pistol calibers, 9mm and larger, and only on progressive reloading presses.

87540 LOCK-OUT DIE

J DIE LOCK-RING WRENCH

No more bashed knuckles or fumbling with adjustable wrenches. The RCBS® Die Lock-Ring Wrench simply slips onto the die lock ring for quick and easy adjustment. A pivoting handle allows leverage from any angle and the heat-treated steel stands up to all the brute force you can muster.

9634 DIE LOCK-RING WRENCH (1-3/16”)

PRESS ACCESSORIES



L ACCESSORY PRESS BASE PLATE-3

Save time, space and eliminate a loading bench top full of holes. Simply attach the Accessory Base Plate—3 to any work surface, then use the pre-tapped, letter-coded holes to quickly mount or dismount RCBS® Pro Chucker 5, Pro Chucker 7, Rock Chucker Supreme, Summit, Trim Pro-2 Case Trimmers, Trim Pro®, Powder Measure Stand, Lube-A-Matic—2, Reloader Special, Rock Chucker®, Pro 2000®, Turret Press, AmmoMaster®, Partner Press and the APS® Bench Mounted and automatic priming tools. Fastening hardware included. Measures approximately 10" x 6" x 1".

Equipment readily secures to plate for quick tool change-overs. Makes the most of limited bench space.

9282 ACCESSORY BASE PLATE-3



A ROCK CHUCKER® SUPREME MASTER RELOADING KIT

We've taken the new benchmark of single stage presses and surrounded it with the equipment you need (except dies and shell holders) to start loading like a pro. A simple solution for the beginner and pro alike. All RCBS reloading kits have been updated to include the Universal Case Loading Block, .17-.60 Debur Tool and the Accessory Handle—2.

9366 ROCK CHUCKER SUPREME MASTER KIT

CONTENTS:

- Rock Chucker Supreme Press
- M500 Mechanical Scale
- Uniflow-3" Powder Measure
- Hand Priming Tool
- Universal Case Load Block
- Accessory Handle -2
- .17-.60 Debur Tool
- Hex Key Set
- Case Lube Kit
- Powder Funnel
- Hodgdon Reloading Manual
- Case Neck Brushes
- UPM Stand Plate



PRESS KITS

B



C



B AMMOMASTER® .50 BMG PACK

The AmmoMaster® .50 BMG Pack makes reloading for the .50 Browning Machine Gun cartridge a simple task. Manufactured to accept RCBS® 1-1/2" .50 BMG dies, along with the massive 1" solid steel ram, provides more than enough strength to handle the .50 and will provide a lifetime of service. This kit includes the press, Full-Length Sizer, Seater Die, Shell Holder, Ram Priming Unit and Trim Die in one convenient box. The only extras required are cartridge components and the rifle to fire them!

88700 AMMOMASTER .50 BMG PACK
88715 STANDARD SHELL HOLDER ADAPTOR

C PARTNER RELOADING KIT 2

Our Partner™ Press anchors this excellent starter kit. Big on performance, small on price, the Partner is the ideal entry-level press. Here it's coupled with some of the finest "basic" reloading tools you'll find anywhere. All RCBS reloading kits include the Universal Case Loading Block, .17-.60 Debur Tool and the Accessory Handle—2.

87472 PARTNER PRESS RELOADING KIT 2

CONTENTS:

- Partner Press
- Universal Case Load Block
- Case Neck Brushes
- Primer Pocket Brushes
- .17-.60 Debur Tool
- Accessory Handle—2
- Powder Funnel
- Hodgdon Reloading Manual
- 1500 Grain Digital Pocket Scale
- Case Slick Spray Lube



A



B



C



A PRECISION MIC™

A few twists of the Precision Mic™ and you'll know your chamber headspace and bullet seating depth to 0.001 of an inch. The Precision Mic measures from the datum point on the case shoulder to the base, giving you spot-on SAAMI tolerance readings. An indispensable tool for safe, accurate loads that extend the life of your rifle brass.

B VERNIER BALL MICROMETER

Economical Vernier Ball Micrometer for measuring case neck thicknesses. All metal body and thimble with matte finish. Range: 0-1". Accuracy within .0001". Ratchet stop on thimble assures uniform application of pressure. Thimble lock keeps thimble from turning when measuring a constant. Adjustment wrench included. Fitted plastic storage case. Imported.

Accessory Base Plate not included.

87324 VERNIER BALL MICROMETER

C VERNIER MICROMETER

Economical version without the bells and whistles. All metal body and thimble with silver matte finish. Crisp black numbers and markings for easy reading. Range: 0-1". Reads to .0001 of an inch. Accuracy within .0001". Ratchet stop on thimble ensures uniform application of pressure when measuring. Thimble lock keeps thimble from turning when measuring a constant. Adjustment wrench included. Fitted plastic storage case. Imported.

87321 VERNIER MICROMETER

PRECISION MICS

.204 RUGER	88209	.270 WIN SHORT MG	88315
.22-250	88302	.270 WIN	88316
.223 REM	88304	7MM REM MAG	88319
.243 WIN	88305	7MM-08 REM	88322
6MM CREEDMOOR	88334	.30-06	88324
6MM GT	88335	.300 WIN SHORT MAG	88325
.25-06	88307	.300 WIN MAG	88327
.260 REMINGTON	88312	.308 WIN	88329
6.5MM CREEDMOOR	88313	.338 WIN MAG	88331
6.5MM PRC	88336	.338 LAPUA	88332
6.5MM X 55 S/M	88314		

CASE PREP



D STAINLESS STEEL DIAL CALIPER

Hardened stainless steel construction. Matte, non-glare finish. Range 0-6". 0.100" direct reading per revolution. 0.001" graduations. Accurate to +/- 0.001". Four-way measurement capability: inside, outside, depth and step. Shockproof movement for accurate measurements. Clear lens protects dial from dust and scratches.

Slide may be locked in any position with thumb lock. Dial easily zeroed. Lock screw holds dial in position for precise measurements. Thumb wheel makes for easy opening and closing of the caliper. Fitted hard plastic storage case. Imported.

87305 STAINLESS STEEL DIAL CALIPER

E ELECTRONIC DIGITAL CALIPER

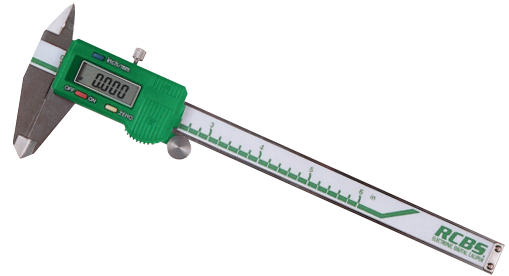
Instant reading. Very easy to use. Hardened stainless steel body for prolonged tool life. Switches from inches to millimeters with the touch of a button. Range of 0-6"/0-150mm. Accuracy +/- 0.001"/0.02mm. Resolution: 0.0005"/0.01mm. Large, easy to read numbers, reduces error—no guessing. Adjusts to zero at any position. Measures internal, external, depth and step dimensions. Jaw depth measures 1-1/2" outside, 5/8" inside. Lock holds slide in position for measuring constants. Battery included. Low battery indicator. Fitted plastic storage case. Imported.

87323 ELECTRONIC DIGITAL CALIPER

D



E



F



F CASE MASTER® GAUGING TOOL

A quick, convenient way to determine several important case and cartridge dimensions. The Case Master® gauging tool measures case neck concentricity, uniformity and thickness, as well as case length and bullet run-out. All are important to accuracy and safety. Detects case head separation before symptoms are apparent on the outside of case. Much quicker than a dial caliper and makes a tedious job simple and less tiring.

87310 CASE MASTER GAUGING TOOL

G



H



I



J



G 50 BMG HIGH CAPACITY TRIMMER COLLETS

Trim all of your big bore cases in no time with the new RCBS® High Capacity Case Trimmer. Designed to handle the most beefy cases such as the .50 BMG and .416 Barrett—plus many other favorites—RCBS answers the call of the big bore shooter. Includes .408, .416 and .50R caliber pilots.

- 90353 COLLET #1
- 90354 COLLET #2

H 1-1/2"–12 BULLET PULLER

The 1-1/2"–12 Bullet Puller is designed for use on the AmmoMaster®—2 or AmmoMaster .50 BMG pack press. Using the .416 or .50 BMG bullet puller collets (sold separately) allows the quick removal of bullets from loaded ammunition so that you can salvage your components.

- 9446 1-1/2"–12 BULLET PULLER
- 9447 .416 BARRETT COLLET
- 9448 .50 BMG COLLET

HC COLLET FIT CHART

.50 BMG/.416 Barrett	HC #1	HC #2
.40-60 Winchester	.50-70 Gov't	.338 Lapua
.408 CheyTac	.50-90-21/2" Sharps Straight	.40-65 Shiloh Sharps
.416 Barrett	.56-50 Spencer	.45-70 Gov't
.45-60 Winchester	.470 NE 31/4"	.45-90-2.4" Sharps Straight
450x400x3" (400 Jeffery)	.500 Jeffery	.45-100-2.6" Sharps Straight
.50-95 Winchester	.500 NE 3"	.45-110-27/8" Sharps Straight
.505 Gibbs		.45-120-31/4" Sharps Straight
.50 BMG		.404 Jeffery
		.450 Rigby Rimless

I .50 BMG CARBIDE PRIMER POCKET UNIFORMER

Designed to be used with the RCBS® Accessory Handle, Trim Mate Case Prep Center or the case prep part of the Universal Case Prep Center, the .50 BMG Carbide Primer Pocket Uniformer utilizes a carbide cutter to square the bottom of the primer pocket and uniform the primer pocket depth. This allows the handloader to easily seat primers to a consistent depth for reliable ignition.

- 9561 .50 BMG CARBIDE PRIMER POCKET UNIFORMER

J .50 BMG MILITARY CRIMP REMOVER

Designed for use with the RCBS® Accessory Handle, Trim Mate Case Prep Center or the case prep part of the Universal Case Prep Center, the .50 BMG Military Crimp Remover cuts away the primer pocket crimp found on military .50 BMG brass, allowing the handloader to easily reprime their cases.

- 9562 .50 BMG MILITARY CRIMP REMOVER

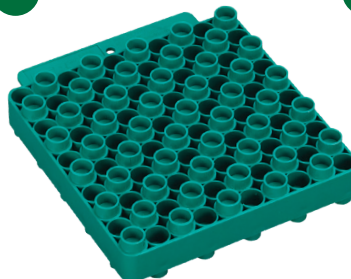
CASE PREP



K



L



M



N



K CASE LUBE KIT

Properly clean and lube cases for resizing the simple way with this complete kit. Includes Case Lube Pad, 2-ounce bottle of Case Lube—2 and two interchangeable Case Neck Brushes for .22 through .30 calibers.

9336 CASE LUBE KIT

CASE LUBE—2 (PICTURED ABOVE WITH CASE LUBE KIT)

An excellent lubricant that's water soluble and convenient to wipe off easily with no sticky residue. Non-toxic. Use Case Lube—2 with RCBS® Lube Dies or Case Lube Pad.

9311 CASE LUBE—2 (2 OZ. BOTTLE)

CASE LUBE PAD (PICTURED ABOVE WITH CASE LUBE KIT)

The best way to lubricate cases for resizing or forming. Coat the pad with Case Lube—2, then roll the case lightly across it. Exactly the right amount of lubricant is transferred to the case. Pad is removable from sealable storage case for easy cleaning.

9307 CASE LUBE PAD

CASE NECK BRUSHES (PICTURED ABOVE WITH CASE LUBE KIT)

Clean dirt and powder residue from inside necks and simultaneously lubricate for expansion with our case neck brushes. The no-roll handle design accepts all three nylon bristle brushes: small brush for .22 to .25 caliber, medium brush for .270 to .30 caliber, large brush for .35 to .45 caliber.

9327 CASE NECK BRUSH-SMALL
9328 CASE NECK BRUSH-MEDIUM
9329 CASE NECK BRUSH-LARGE

L UNIVERSAL CASE LOADING BLOCK

The RCBS® Universal Case Loading Block has been designed to fit most any standard rifle or pistol case. The two-sided design offers three different case fits per side and will hold 50 cases. Short pistol cases fit in the raised upper portion of the block for easy access. The stepped holes accommodate large pistol and rifle cases.

9452 UNIVERSAL CASE LOADING BLOCK

M CASE SLICK® SPRAY LUBE

Case Slick is an exclusive formulation that provides exceptional lubricity for resizing or forming of metallic rifle and pistol cases. Testing reveals Case Slick reduces the force needed to resize .308 Winchester cases by 35 to 70% when compared to other lubes. Reducing the resizing force makes the process easier on you and your brass. Case Slick is formulated to flow evenly over the surface of the brass. Uniform coverage makes resizing a breeze and eliminates the possibility of denting the shoulder of the case.

9315 CASE SLICK SPRAY LUBE

† Shipped UPS Ground only. No international sales.

N FOLD-UP HEX KEY WRENCH

Eight heat-treated hex keys fit most hex head screws on RCBS® equipment. Key sizes: 0.050", 1/16", 5/64", 3/32", 7/64", 1/8", 9/64" and 5/32". Handy and easy to locate on the bench when you need a hex key.

98975 FOLD-UP HEX KEY WRENCH



O DECAP DIE

Use our Decapping dies to quickly remove primers from cases prior to cleaning. The Decap Die .22-.25 will handle most cases. The heavy duty die is designed for use on military primer crimped cases larger than 27-caliber.

- 87580 DECAP DIE .22-25-CALIBER
- 87585 HEAVY DUTY DECAP DIE .27-45-CALIBER
- 87575 DECAP UNIT .22-25-CALIBER
- 87586 HEAVY DUTY DECAP UNIT

P LUBE DIES

Decap and lube cases in one step with our exclusive Lube Die. Designed for progressive presses like the Pro Chucker, Pro 2000, Piggyback™ II, AmmoMaster®, and Auto 4x4, but works just fine in single-stage presses. Four sizes cover 45 popular calibers. It's faster and cleaner than a lube pad; easy to refill with lubricant (RCBS® Case Lube—2); standard 7/8"-14 thread. See Reference Chart on page 44-45.

- 87551 LUBE DIE # 1
- 87552 LUBE DIE # 2

Q PRIMER POCKET BRUSH COMBO

A build-up of residue in primer pockets can cause misfires. A couple of twists with our Primer Pocket Brush and residue is easily cleaned out. Brushes have stainless bristles and interchangeable mounts for large and small primer pockets. Comes with a no-roll accessory handle.

- 9578 SMALL BRUSH ONLY
- 9577 LARGE BRUSH ONLY
- 9332 ACCESSORY HANDLE—2
- 9575 PRIMER POCKET BRUSH COMBO



CASE PREP



R PRIMER POCKET SWAGER - BENCH TOOL

This dedicated bench mounted Primer Pocket Swager Tool makes removal of primer pocket staking/crimp a simple task. Staked/crimped primer pockets can be found in more than just military ammunition. Due to the popularity of AR platform rifles, much of the commercial ammunition also has staked primer pockets. The rugged die cast aluminum base, hardened steel cam and foam padded grip handle require 35% less force than other tools to complete the job. A hardened steel rod supports the case from the inside allowing the case to float for perfect alignment with the hardened steel swager head. Rotate the case down into position and with a simple pull and push of the handle, the job is complete. Includes hardened steel small and large swaging heads and rods to accommodate cases 22-caliber and larger.

9474 PRIMER POCKET SWAGER – BENCH TOOL

S FLASH HOLE DEBURRING TOOL

Burrs left on the inside of the flash hole during manufacturing can cause erratic ignition. This handy tool automatically locates the hole and quickly removes the burr. A self-centering pilot collar with an adjustable stop allows quick alignment and prevents the removal of too much brass.

FLASH HOLE DEBURRING TOOL WITH CASE PILOT STOP

.22 CAL.	88145	7MM CAL.	88147
6MM CAL.	88146	.30 CAL.	88148

FLASH HOLE DEBURRING TOOL CASE PILOT STOP ONLY

.22 CAL.	88122	.34 CAL.	88131
6MM CAL.	88123	.35 CAL.	88133
.25 CAL.	88124	.36 CAL.	88134
6.5MM CAL.	88125	.375 CAL.	88135
.270 CAL.	88126	40/10MM	88136
7MM CAL.	88127	.41 CAL.	88137
.30 CAL.	88128	.44 CAL.	88138
.32 CAL.	88129	.45 CAL.	88139
8MM CAL.	88130	Replacement Rod & Cutter	88144

T PRIMER POCKET SWAGER COMBO—2

The Primer Pocket Swager has been redesigned to fit a larger group of cases. The swaging rods are made from stronger high tensile steel, more than doubling the strength of the original design.

NOTE: Not for use on progressive presses.

9481 PRIMER POCKET SWAGER COMBO—2

U VLD DEBURRING TOOL

The increasing popularity of Very Low Drag style bullets has led RCBS® to offer a 22 degree VLD Debur tool. The 22 degree angle allows the bullet to be seated into the case without damaging the boat-tail and ruining accuracy. The VLD debur tool can be used as is, attached to a RCBS Accessory Handle or mounted on the Trim Mate Case Prep Center.

9352 VLD DEBURRING TOOL W/ HANDLE

9351 VLD DEBURRING TOOL

V ACCESSORY HANDLE—2

Larger ergonomic handle for use with many RCBS accessories.

9332 ACCESSORY HANDLE—2

W DEBURRING TOOL .17-.60

The larger Deburring Tool allows the inside and outside chamfering and deburring of cases from 17-caliber up to 60-caliber. Larger than our standard deburring tool, this tool is perfect for handloading cases over 45-caliber. But if you want one deburring tool to do it all, this is it. Made of hardened steel to last a lifetime.

9348 DEBURRING TOOL .17-.60



X POW'R PULL® KIT

Get yourself out a jam with the RCBS® Pow'r Pull® Kit. This kinetic style bullet puller's rugged one-piece body and user-friendly ergonomic handle resolves mistakes quickly and easily. The three case holding chucks will accommodate cases from 5.7x28mm and .22 Hornet up through the WSM and RUM family of cartridges.

NOTE: Not for use with rimfire cartridges.

- 9412 POW'R PULL KIT**
- 9451 REPLACEMENT SMALL CHUCK ASSEMBLY**
- 9418 REPLACEMENT CHUCK ASSEMBLY**
- 9416 MAGNUM CHUCK ASSEMBLY (FOR WSM & BELTED MAGS)**

Y STANDARD BULLET PULLER

Not sure about the powder charge? Need to change bullets? The RCBS® Standard Bullet Puller is designed to easily pull and not damage jacketed bullets. It utilizes the standard 7/8"-14 thread and may be used in most single stage presses having this thread. Requires caliber specific collet listed below:

NOTE: Not for use with rimfire cartridges. Not for use with RCBS Summit press.

9440 STANDARD BULLET PULLER W/O COLLET

STANDARD BULLET PULLER COLLETS:

9419	.17	9429	.348
9438	.20	9430	.35/.38 Spec.
9420	.22	9437	9.3mm
9421	6mm	9431	.375
9422	.25	9432	.40
9423	6.5mm	9433	.41
9424	.270	9434	.416
9425	7mm	9435	.44/11mm
9426	.30/7.35mm	9436	.45
9427	.338	9439	.475
9428	.32/8mm	9445	.500

Z ULTRASONIC CASE CLEANER

Save time and get reloading faster with the RCBS® Ultrasonic Case Cleaner. Its 3.2-quart stainless steel tank holds a huge volume of brass cases, rapidly removing tarnish, carbon buildup and metal oxides. Use the keypad and display to select one of five preset temperature settings and set the timer from 1 to 30 minutes to match your case-cleaning needs. Use with RCBS Ultrasonic Case Cleaning Solution (sold separately) for perfect results every time. It features a powerful 60W transducer, 100W ceramic heater, 36kHz ultrasonic frequency and a sensor that indicates when to change out solution. The cleaner has a degas function, plastic basket, and convenient drain valve and tube.

87055 ULTRASONIC CASE CLEANER 120 VAC US/CAN

AA ULTRASONIC CASE CLEANER -2

The new RCBS® Ultrasonic Case Cleaner -2 includes significant changes from the previous model. The Ultrasonic Case Cleaner -2 is larger – nearly 100% larger. The 6.3-quart capacity is twice as big, with a second ceramic heater and transducer to better clean brass cases and firearm parts. The LCD is easily programmable, and the timer can be set for up to 30 minutes of continuous cleaning. The Ultrasonic Case Cleaner -2 delivers clean brass in a short amount of time.

87056 ULTRASONIC CASE CLEANER -2 120 VAC US/CAN

87061 ULTRASONIC CASE CLEANER -2 240 VAC INTERNATIONAL

BB ULTRASONIC/ROTARY CASE CLEANING SOLUTION

Designed for use with the RCBS® Ultrasonic Case Cleaner, the Ultrasonic/Rotary Case Cleaning Solution quickly removes tarnish, carbon buildup and metal oxides from cartridge cases. The specialized formulation cleans brass cases inside and out, including the primer pockets (spent primers must be removed), producing a bright, professional-grade finish. Ultrasonic/Rotary Case Cleaning Solution is non-corrosive and non-combustible, making it safe and easy to use. One quart of the concentrated solution makes 10 gallons of cleaning mix, and it comes with a built-in measuring cup for use with all brands of ultrasonic cleaners. The Ultrasonic/Rotary Concentrate Solution has anti-tarnish protection and works with rotary style cleaners.

87057 ULTRASONIC/ROTARY CONCENTRATE

CASE PREP

CC



DD



EE



FF



GG



HH



CC ULTRASONIC WEAPONS CLEANING SOLUTION

Designed for use with the RCBS® Ultrasonic Case Cleaner, Ultrasonic Weapons Cleaning Solution quickly removes grease, carbon buildup and fouling from firearm parts and reloading dies. The fast-acting synthetic detergent cleans all part surfaces, and its rust preventive helps stop corrosion. Ultrasonic Weapons Cleaning Solution is easy to use, and its formulation is non-corrosive and non-combustible.

CONTENTS

- 1-quart container makes 10 gallons of cleaning mix (40:1 ratio)
- Built-in measuring cup
- Made in the USA

87059 ULTRASONIC WEAPONS CLEANING SOLUTION

FF ROTARY CASE CLEANER

The RCBS® Rotary Case Cleaner thoroughly cleans cases with constant rotating action. The quiet, gear-driven motor rotates the drum at 60 RPM. The tumbling action scrubs all surfaces of the cartridge case, inside and out, and the timer can be set for up to three hours of consecutive cleaning. The quiet, rubber-lined drum features an ergonomic handle for easy loading and unloading, and the quick-locking lid keeps contents secure.

CONTENTS

- Includes five pounds of magnetic stainless steel media
- 240 VAC model is EU/UK/AUS compliant
- Limited Two Year Warranty

87001 ROTARY CASE CLEANER 120 VAC US/CAN
87006 ROTARY CASE CLEANER 240 VAC INTERNATIONAL
87002 REPLACEMENT DRUM

DD CASE CLEANING MEDIA

Our dry media can be used in both Sidewinder and Vibratory Case Cleaners. Formula 1 Walnut Shell is ground to a 12/12 sieve size. Formula 2 is Corn Cob. Polish comes individually packed so you can choose various amounts of media to mix.

87067 FORMULA 1 WALNUT SHELL DRY MEDIA
87068 FORMULA 2 CORN COB DRY MEDIA
87069 POLISHING COMPOUND (5-PACK)

EE VIBRATORY CASE POLISHER

Bright, ready-to-load brass is ready in minutes with the RCBS® Vibratory Case Polisher. It shines up to 14 pounds of brass/media at one time with aggressive vibrating action. A quiet motor powers the cleaner, and a sifting lid helps separate brass from debris. Quality handloads start with quality brass, and the Vibratory Case Polisher delivers.

87060 VIBRATORY CASE POLISHER 120 VAC US/CAN
87065 VIBRATORY CASE POLISHER 240 VAC INTERNATIONAL

GG CASE MEDIA SIFTER

Quickly and easily separate the cleaning media from the cleaned cases. First dump the cleaned cases and media into a bucket. Next attach the Media Sifter to the Vibratory Case Cleaner and turn on the cleaner. Slowly pour the cases and media into the media sifter. Allow the Case Cleaner to run until all the media is emptied back into the bowl—then it's ready for the next time cases need cleaning.

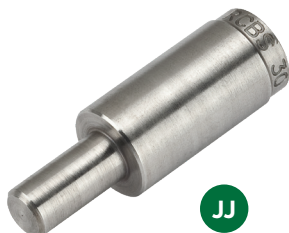
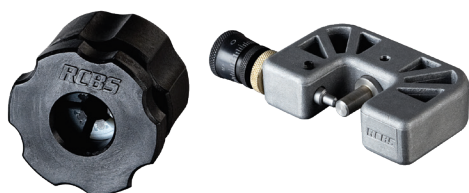
87075 CASE MEDIA SIFTER

HH ROTARY CASE/MEDIA SEPARATOR

In short order, separate the cleaned cases from the cleaning media. Merely empty the cases and media from the case cleaner into the separator basket. With several turns of the basket handle the media falls to the bottom of the separator, leaving the cases clean and ready to use. The fine dust from the media is trapped inside the separator. Heavy-duty plastic construction for years of trouble-free service. Capacity: approximately 180 .30-06 cases or 400 .38 Special cases with media.

87076 ROTARY CASE/MEDIA SEPARATOR

II



JJ

II HAND CASE NECK TURNER

The RCBS® Hand Case Neck Turner is designed to “peel” the brass from the outside of your case necks to a consistent thickness. Most commercially available brass has variances in the case neck thickness. This leads to case neck concentricity and bullet run-out issues. Truing up the case neck produces more consistent and accurate hand loaded ammunition. The cutter portion uses caliber specific pilot/mandrels (sold separately) to guide the case neck.

The cutter design features the ability to “zero” the cutter to the pilot/mandrel and then use the micrometer adjustment to dial the desired case neck thickness in .0005” increments. The cutter can also be set for right or left handed use.

The Quick Change Case Holder has many advantages over the competition. Most other units use a “tap wrench” design to hold cartridge cases. Though this is great for threading holes with a self feeding tap, it does nothing to feed your case neck to the cutter. The RCBS Quick Change Case Holder features an ergonomic design that allows you to rotate the case and put forward pressure to feed the case neck to the cutter. The quick case change feature helps to speed up the process without having to use small obtrusive thumbscrews.

- 90401 HAND CASE NECK TURNER W/ QC CASE HOLDER**
- 90402 QUICK CHANGE CASE HOLDER**
- 90405-27 HAND CNT PILOT .17-.500**

JJ HAND CASE NECK TURNER PILOTS

The RCBS® caliber-specific pilots are designed to fit the specific cartridge case you are turning the neck of, ensuring a precise and snug fit. When used with the Hand Case Neck Turner, these pilots guide the turning cutter for precisely trimming and shaping the neck of the cartridge case.

Using a Hand Case Neck Turner with caliber-specific pilots can help you achieve consistent neck thickness and bullet release tension. This, in turn, can lead to more accurate and consistent bullet seating, which is critical for precision shooting applications such as benchrest and long-range target shooting.

- Ensures consistent neck thickness and the most accurate ammunition possible
- Guides turning cutter for precisely trimming and shaping neck of cartridge case
- Specific caliber pilots are required.

KK



LL

KK CASE NECK TURNING ACCESSORIES

Two tools for fast, easy removal of excessive neck thickness or variation in case thickness. They guide the cutter over the sized cartridge case neck and are supported by the special pilot/reamer. The inside and outside of the neck are turned simultaneously. The Auto Feed Attachment (for Case Trimmer-2, Trim Pro and Trim Pro-2 Manual Case Trimmer) advances the cutting tool evenly over the case neck with each turn of the trimmer handle.

NOTE: Not to be used with Trim Pro or Trim Pro -2 Power Case Trimmer.

98861 CASE NECK TURNER

LL PILOT/NECK REAMERS

RCBS® Case Neck Turner Pilot-Reamers allow fast, easy removal of excessive neck thickness or variation in case thickness from the inside of the case neck walls. Whether you’re a seasoned professional or just starting out, RCBS® Case Neck Turner Pilot-Reamers are an essential accessory for achieving accurate and reliable reloads. Upgrade your reloading gear with RCBS® Case Neck Turner Pilot-Reamers today.

PILOT/NECK REAMERS:

98877	.17 Cal.	98883	7mm Cal.
98876	.20 Cal.	98884	.30 Cal.
98878	.223 Cal.	98886	8mm Cal.
98879	.6mm/243 Cal.	98887	.338 Cal.
98880	.25 Cal.	98889	.35 Cal.
98881	6.5mm Cal.	98891	.375 Cal.
98882	.270 Cal.		

HAND CASE NECK TURNER PILOTS:

90405	.17 Cal.	90413	.30 Cal.	90421	.40 Cal.
90406	.20 Cal.	90414	.31 Cal.	90422	.41 Cal.
90407	.22 Cal.	90415	.32 Cal.	90423	.416 Cal.
90408	.24 Cal.	90416	.33 Cal.	90424	.44 Cal.
90409	.25 Cal.	90417	.34 Cal.	90425	.45 Cal.
90410	.26 Cal.	90418	.35 Cal.	90426	.475 Cal.
90411	.27 Cal.	90419	.36 Cal.	90427	.500 Cal.
90412	.28 Cal./7mm	90420	.37 Cal.		

CASE TRIM



A



B

A BRASS BOSS

Getting brass ready to reload used to be a long, arduous process. No more. The RCBS Brass Boss features six variable speed, rotating stations that completely prepare trimmed brass for reloading, all in one stop. The Brass Boss includes tools for all six stations: an inside VLD chamfering tool, outside deburring tool, primer pocket cleaner (small/large), military crimp remover (small/large), primer pocket uniformer (small/large), case neck brushes (four diameters) and a tub of dry case neck lubricant. Save time, elbow grease and process brass efficiently with Brass Boss.

- Six variable, high-speed rotating stations (four at <350 rpm; two at <550 rpm)
- Two fixed stations for case neck brushes
- Tools included for all stations
- Storage area for tools not in use
- 120-240 VAC for operation in multiple countries
- US, UK, EU and Australian power cords
- 2-year limited warranty

90390 BRASS BOSS 120/240 VAC MULTI COUNTRY

B TRIM PRO® CASE TRIMMER STAND

Raise your manual case trimmer to new heights with the Trim Pro® Stand. Provides more working room and hand clearance. Also provides convenient storage space for Trim Pro Shell Holders and Pilots. Stand mounts easily on accessory base plate or directly on a bench. Dimensions: 4-7/8" x 8-5/8" x 1". Manual trimmers only.

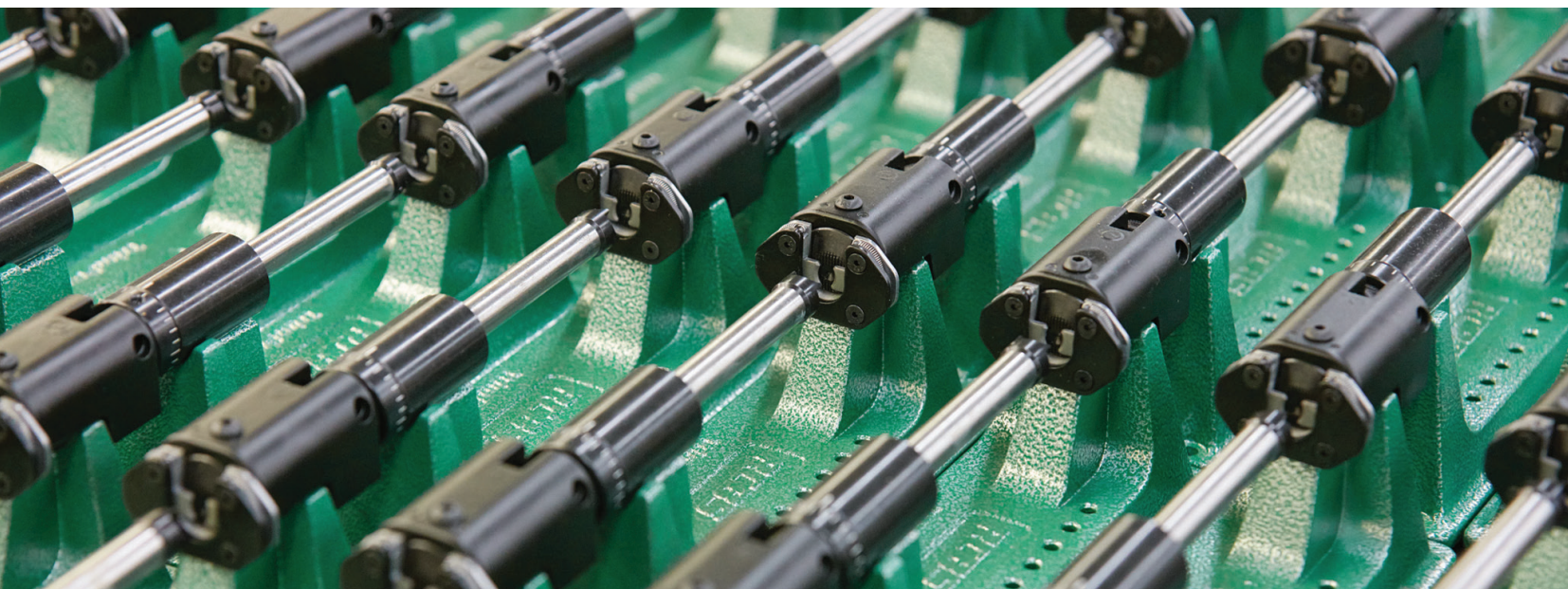
NOTE: Pilots and shell holders not included.

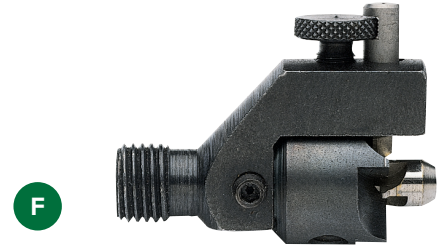
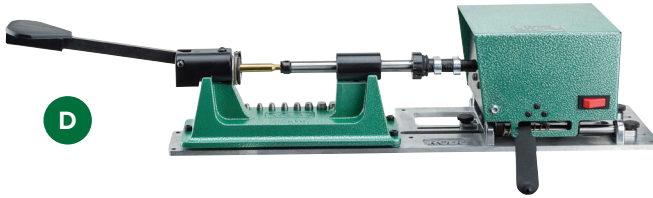
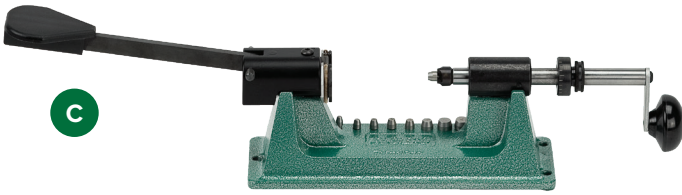
90360 TRIM PRO CASE TRIMMER STAND

TRIM PRO® ACCESSORIES (NOT PICTURED)

Accessories for the Trim Pro® Power Case Trimmer.

90359 POWER UNIT ONLY 120 VAC US/CAN





C TRIM PRO®-2 MANUAL CASE TRIMMER

The popular Trim Pro® case trimmer has been improved with the addition of a spring-loaded universal shell holder. The spring-loaded shell holder securely locks the case in alignment with the cutter. The trimmer is designed for .001" accuracy. Coarse and fine trim length adjustments. Fine adjustment bushing features .001" micrometer markings. The spring-loaded shell holder will accommodate case head diameters from .250" to .625" rims. Case fit is from the 5.7mmx28 to the long range .338 Lapua Magnum.

Kit includes pilots: .22, .24, .25, .27, .28, .30, .35, .44 and .45.

Note: Cases with rim diameters larger than .625" must be trimmed on the 90352 High Capacity Trimmer.

- 90366 TRIM PRO—2 MANUAL CASE TRIMMER KIT
- 98930 POWER DRILL CONVERTER
- 90250 REPLACEMENT CARBIDE TRIMMER CUTTER HEAD
- 9364 REPLACEMENT .50 CAL. TRIMMER CUTTER
- 9406 REPLACEMENT CUTTER HEAD

.50R PILOT/50-CALIBER CUTTER (NOT PICTURED)

Pilots and cutter for use on Rotary or Trim Pro case trimmers. These accessories are a must if you are trimming cases like the .500 S&W or .50-90 Government.

- 9400 .50R PILOT
- 9364 50-CALIBER TRIMMER CUTTER

D TRIM PRO®-2 POWER CASE TRIMMER

Having the same improved spring-loaded universal shell holder of the manual trimmer, the Power Case Trimmer features a high torque low RPM motor. The self-feeding spring-fed cutter makes case trimming easy and accurate. No pushing or feeding pressure is required, leaving your hands free to do other case preparation tasks such as chamfering, deburring or primer pocket cleaning. The positive locking handle and integral power switch makes operation simple and safe. RCBS has also added a manual on/off switch to aid in setting case trim length. Two year limited warranty.

Kit includes pilots: .22, .24, .25, .27, .28, .30, .35, .44 and .45.

Note: Cases with rim diameters larger than .625" must be trimmed on the 90352 High Capacity Trimmer.

- 90367 TRIM PRO—2 POWER CASE TRIMMER KIT 120 VAC US/CAN

E TRIM PRO®-2 SHELL HOLDER CONVERSION

Upgrade your Trim Pro trimmer to eliminate the need to purchase additional TP Shell Holders. This conversion features spring-loaded jaws that will accommodate cases from .250" to .625". Not for use with Rotary Case Trimmer or Rotary Case Trimmer—2.

NOTE: Cases with rim diameters larger than .625" must be trimmed on the 90352 High Capacity Trimmer.

- 90368 TRIM PRO—2 SPRING LOADED SHELL HOLDER CONVERSION

F TRIM PRO® 3-WAY CUTTER

This is automated case preparation at its finest. Our 3-Way Cutter is one of those accessories you can't live without. Its unique three-blade head configuration trims cases like our standard cutting tool, but in addition to trimming to length, inside blades chamfer the case while an outside blade deburrs it. The 3-Way cutter attaches easily to both Case Trimmers and Trim Pros.

- 90251 REPLACEMENT 3-WAY CARBIDE CUTTER HEAD

Note: Not for .17 to .20 caliber.

- 90245 VLD 3-WAY CARBIDE CUTTER

- .22-.50 Calibers
- Carbide cutters for facing, debur and chamfer
- 11 degree angle deburring ideal for modern, low drag bullets
- Uses standard pilots

TRIM PRO 3-WAY CUTTERS: (INCLUDES CUTTER & PILOT)

90276	.17 Cal.	90282	.270 Cal.
90277	.20 Cal.	90283	7mm Cal.
90278	.22 Cal.	90284	.30 Cal.
90279	6mm Cal.	90285	.32 Cal.
90280	.25 Cal.	90287	.338 Cal.
90281	6.5mm Cal.	90291	.375 Cal.

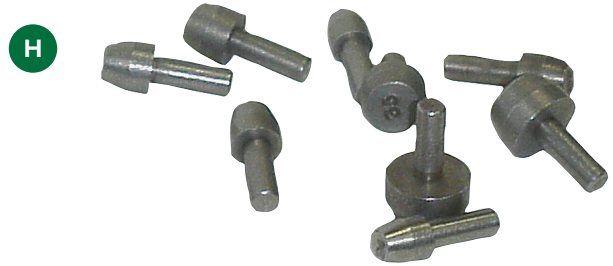
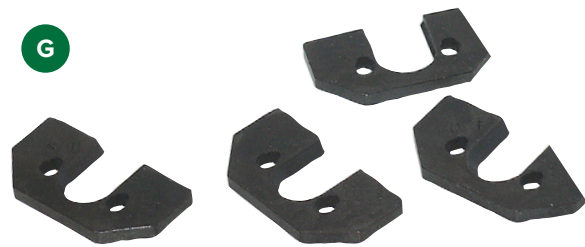
TRIM PRO 3-WAY PILOT/CHAMFER

90256	.17 Cal.	90262	.270 Cal.
90257	.20 Cal.	90263	7mm Cal.
90258	.22 Cal.	90264	.30 Cal.
90259	6mm Cal.	90265	.32 Cal.
90260	.25 Cal.	90267	.338 Cal.
90261	6.5mm Cal.	90271	.375 Cal.



- 90245 VLD 3-WAY CARBIDE CUTTER

CASE TRIM



G TRIM PRO® SHELL HOLDER

The RCBS® Trim Pro® Case Trimmers feature unique shaped shell holders to firmly hold your rifle and pistol cases in perfect alignment with the cutter. This system allows for accurate and repeatable case trimming lengths and leaves the case mouths square to the body. The Trim Pro Shell Holders are numbered the same as our standard shell holders to make identification and use simpler. Available individually, or in pre-packs, for most popular rifle and pistol cartridges.

See the Reference Chart on pages 42 and 44-45 to determine the Trim Pro Shell Holder number required.

TRIM PRO SHELL HOLDERS			
90301 #1	90312 #12	90324 #24	90337 #37
90302 #2	90313 #13	90325 #25	90338 #38
90303 #3	90314 #14	90326 #26	90339 #39
90304 #4	90315 #15	90327 #27	90340 #40
90305 #5	90316 #16	90328 #28	90341 #41
90306 #6	90317 #17	90330 #30	90342 #42
90307 #7	90318 #18	90332 #32	90343 #43
90308 #8	90319 #19	90333 #33	90344 #44
90309 #9	90320 #20	90334 #34	90348 #48
90310 #10	90321 #21	90335 #35	
90311 #11	9323 #23	90336 #36	

H CASE TRIMMER PILOTS

Designed with a taper to guide pilot into the case mouth. Prevents case from wobbling when trimming case to length. Refer to the reference chart on page 25 to determine the correct pilot for a specific caliber. For use with RCBS® Trim Pro® Case Trimmers, Rotary Case Trimmer—2 and Rotary Case Trimmer.

For use with RCBS Case Trimmers only (See chart below)

See the Reference Chart on pages 42 and 44-45 to determine the Trim Pro Shell Holder number required.

CASE TRIMMER PILOTS		
9377	.17 Cal.	9388 .34 Cal.
9376	.20 Cal.	9389 .35 Cal.
9378	.22 Cal.	9390 .36 Cal.
9379	.24 Cal.	9391 .37 Cal.
9380	.25 Cal.	9392 .40 Cal.
9381	.26 Cal.	9393 .41 Cal.
9382	.27 Cal.	9397 .416 Cal.
9383	.28 Cal.	9394 .44 Cal.
9384	.30 Cal.	9395 .45 Cal.
9385	.31 Cal.	9396 .45-R Cal.
9386	.32 Cal.	9398 .475 Cal.
9387	.33 Cal.	9399 .500 Cal.
		9400 .50-R Cal.

TRIM PRO PISTOL PACK 90361
CT Pilot, 40 Caliber
CT Shell Holder #6
CT Shell Holder #16
CT Shell Holder #18
CT Shell Holder #27

TRIM PRO RIFLE PACK 90362
CT Shell Holder #2
CT Shell Holder #3
CT Shell Holder #4
CT Shell Holder #10



I CASE PREP ACCESSORIES

- 90377 DRY CASE NECK LUBE
- 90378 PRIMER POCKET UNIFORMER, LARGE RIFLE - CARBIDE
- 90383 PRIMER POCKET UNIFORMER, LARGE PISTOL - CARBIDE
- 90379 PRIMER POCKET UNIFORMER, SMALL - CARBIDE
- 90382 DUST COVER
- 9351 VLD DEBURRING TOOL
- 90384 TM CARBIDE CHAMFER TOOL
- 90385 TM CARBIDE DEBUR TOOL
- 90386 TM MILITARY CRIMP REMOVER—2, SMALL
- 90387 TM MILITARY CRIMP REMOVER—2, LARGE

TRIM PRO PILOT & SHELL HOLDER 90363
CT Pilot 22 Cal.
CT Pilot 24 Cal.
CT Pilot 25 Cal.
CT Pilot 27 Cal.
CT Pilot 28 Cal.
CT Pilot 30 Cal.
CT Pilot 35 Cal.
CT Pilot 44 Cal.
CT Pilot 45 Cal.
CT Shell Holder #2
CT Shell Holder #3
CT Shell Holder #4
CT Shell Holder #10



Primer tray is easily removed for loading and can accommodate 100 primers



A UNIVERSAL HAND PRIMING TOOL

The Universal Hand Priming tool combines features found on our other two hand priming tools into one convenient package. We took the universal shell holder from the APS® tool and combined it with the primer tray from the standard tool to offer unmatched performance. The universal shell holder will accept cases from .32 ACP to .45-70 Government. The removable primer tray orients your primers for use and will fit any manufacturer's primer packaging. Includes accessories to seat large and small rifle or pistol primers.

90201 UNIVERSAL HAND PRIMING TOOL

Primer tray is easily removed for loading and can accommodate 100 primers

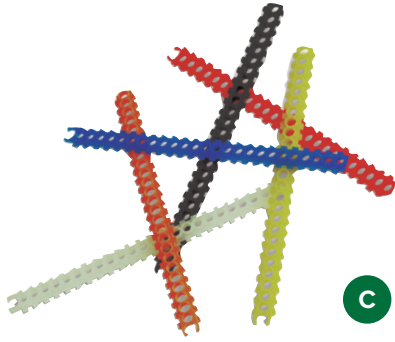


B HAND PRIMING TOOL

Our Hand Priming Tool seats primers quickly. Fits in your hand for portable primer seating. Primer tray installation requires no contact with the primers. Uses the same RCBS® shell holders (post-1980) as RCBS presses. Made of durable cast metal. Includes large and small primer plugs.

90200 HAND PRIMING TOOL 90202 UHPT TRAY & LID ASSEMBLY (UNIVERSAL HPT SQUARE TRAY & LID COMPATIBLE WITH 90200 HPT)

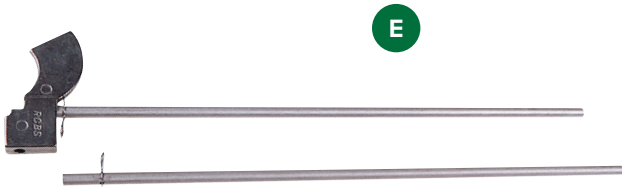
PRIMING



C APS® UNPRIMED PRIMER STRIPS

These strips are color-coded for fool-proof identification. Each strip holds 25 primers. Strips can be loaded with the primer of your choice using the striploader. Primers not included.

88510 APS STRIP, LG. RIFLE 8/PK	YELLOW
88511 APS STRIP, LG. PISTOL 8/PK	WHITE
88512 APS STRIP, SM. RIFLE 8/PK	YELLOW
88513 APS STRIP, SM. PISTOL 8/PK	WHITE
88514 APS STRIP, MAG LG. RIFLE 8/PK	BLUE
88515 APS STRIP, MAG LG. PISTOL 8/PK	RED
88516 APS STRIP, MAG SM. RIFLE 8/PK	BLUE
88517 APS STRIP, MAG SM. PISTOL 8/PK	RED
88518 APS STRIP, BR2 LG. RIFLE 8/PK	BLACK
88519 APS STRIP, BR4 SM. RIFLE 8/PK	BLACK
88520 APS STRIP, 5.56MM MILITARY 8/PK	ORANGE
88521 APS STRIP, 7.62MM MILITARY 8/PK	ORANGE



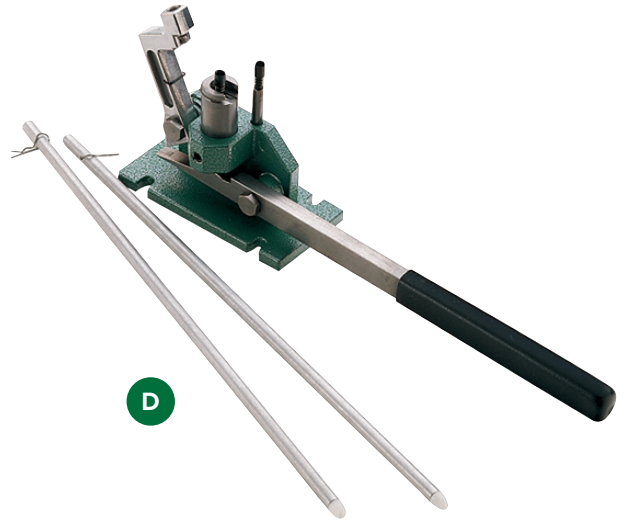
E AUTOMATIC PRIMER FEED COMBO

Drops primers one at a time into the Primer Plug and sleeve. Stops misfires as greasy fingers never need to touch primers. Nylon Primer Pick-up keeps primers from falling out. Tube capacity: 100 primers.

For Rock Chucker® II Press; also fits JR and Reloader Special Presses.

NOTE: Not for use with RC Supreme.

- 9580 AUTO PRIMER FEED COMBO FOR LARGE & SMALL PRIMERS
- 9581 LARGE PRIMER TUBE ONLY
- 9582 SMALL PRIMER TUBE ONLY



D AUTOMATIC PRIMING TOOL

The Automatic Priming Tool is fast, accurate and highly sensitive due to a unique single-stage lever system. Primers feed through the auto primer feed tube one by one, preventing potential contamination by oily fingers. Two primer rod assemblies and two primer feed tubes are included.

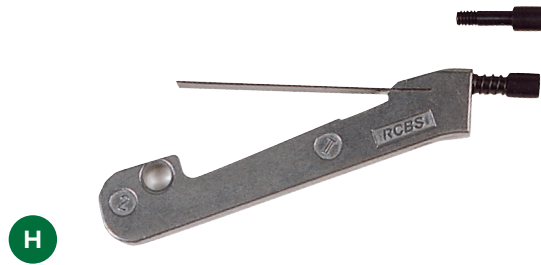
- 9460 AUTOMATIC PRIMING TOOL
- 9471 PRIMER ROD ASSEMBLY LARGE & SMALL



F RAM PRIMING UNIT

The Ram Priming Unit gives you better “feel” by seating the primer at the top of the press stroke. You can also preset a positive stop to speed up your reloading process. Works with any single stage or turret press with 7/8”-14 thread and RCBS-type single stage shell holder. Includes large and small primer rod assemblies for Boxer-type rifle and pistol primers.

- 9165 RAM PRIMING UNIT



G .50 BMG RAM PRIMING UNIT

The .50 BMG Ram Priming Unit in conjunction with the AmmoMaster® Single Stage press allows you to re-prime this powerful cartridge. It comes supplied with a flat and cupped primer plug to accommodate the two styles of primers available for the .50 BMG.

88772 .50 BMG RAM PRIMING UNIT

H UNIVERSAL PRIMER ARM-2

Designed for fast, accurate primer seating. Primer plugs and sleeves included for large and small rifle and pistol primers. Changing sizes is fast and easy—less than 60 seconds. Fits Rock Chucker® II, JR, Reloader Special and most “C” Presses.

NOTE: Not for use with RC Supreme

9550 UNIVERSAL PRIMER ARM FOR LARGE & SMALL PRIMERS

9552 PRIMER PLUG, SLEEVE & SPRING FOR LARGE PRIMERS

9553 PRIMER PLUG, SLEEVE & SPRING FOR SMALL PRIMERS



I PRIMER CATCHER

Made to keep spent primers off the floor when ejected from fired cases. Plastic clip holds Primer Catcher snug and secure to press. Easily removed for emptying. For Rock Chucker®, JR and Reloader Special Presses only.

9114 PRIMER CATCHER

J PRIMER TRAY-2

The Primer Tray-2 handles today's larger primer package quantities. The square shape makes it easier to handle. Grooved tray surface quickly positions primers anvil-side up.

9480 PRIMER TRAY-2

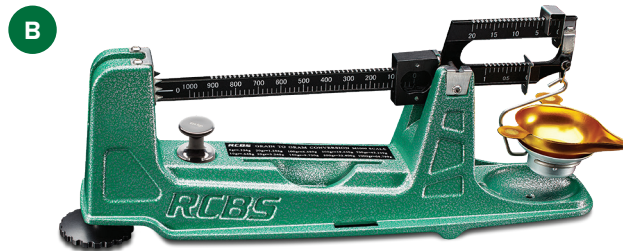
SCALES



A M500 MECHANICAL SCALE

The M500 mechanical scale provides right or left-handed operation and a wealth of big-time features at an affordable price. Featuring a proven two-poise design that lets you weigh up to 505 grains with ± 0.1 -grain accuracy, the M500 also offers RCBS' magnetic damping system for fast readings, and maintenance-free movement. The tip-proof metal pan makes loading easier, and a rugged die cast metal base even features a grain-to-gram conversion table to aid in calculations and recipe conversions. Limited lifetime warranty. Imported.

98915 M500 MECHANICAL SCALE



B M1000 MECHANICAL SCALE

The M1000 mechanical scale gives users 1,000-grain capacity with ± 0.1 -grain accuracy, plus right or left-handed operation. It offers magnetic damping for fast readings and maintenance-free movement. A metal tip-proof pan makes loading easy. Limited lifetime warranty. Imported. Includes storage cover.

98916 M1000 MECHANICAL SCALE



C RANGEMASTER 2000 GR 120/240 VAC/DC

The RangeMaster 2000 high-performance electronic scale handles up to 2,000 grains with ± 0.1 grain accuracy to precisely measure powder, bullets, cases or loaded cartridges. It provides right or left-handed operation and a wealth of big-time features. Compact size and the ability to operate on AC or DC power, make it perfect for use on the bench or at the range. The touchscreen LCD is easy to read and operate, and provides an auto shut off function to save the battery. The scale is fast and easy to calibrate with the two included calibration/check weights. This scale is designed for serious shooters who want the best, high-tech scale on the market, and it delivers! One year limited warranty. Imported.

98945 RANGEMASTER 2000 ELECTRONIC SCALE 120/240 VAC MULTI COUNTRY USE



D SCALE CHECK WEIGHTS

You rely on your scale for safe, accurate powder charges. Over time, accumulated grit and dust can affect accuracy. A quick test with RCBS® Scale Check Weights will tell you if your scale is reading correctly. Sets include: Standard set of 60.5 grains for powder charges (2x20, 1x10, 1x5, 2x2, 1x1, 1x.5). Deluxe set of 506.5 grains for bullets, cases and powder (1x200, 2x100, 1x50, 2x20, 1x10, 1x5, 1x1, 1x.5, 1 forceps).

*Deluxe Scale Check Weights pictured.

98991 STANDARD SCALE CHECK WEIGHTS

98993 DELUXE SCALE CHECK WEIGHTS

98917 SCALE PAN (5-0-2, 5-0-5, 5-10 & 10-10 SCALES)

98918 SCALE PAN SUPPORT (5-0-2, 5-0-5, 5-10 & 10-10 SCALES)



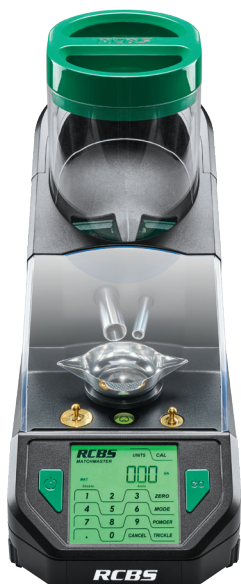
E SCALE PAN WITH INTEGRATED FUNNEL

Is your powder funnel always missing when you need it most? The RCBS® Scale Pan Powder Funnel eliminates that problem. The Scale Pan features an integrated powder funnel that allows you to pour the powder directly into the case. The new scale pan is designed for use with electronic scales and powder dispensers.

9090 SCALE PAN WITH INTEGRATED FUNNEL



POWDER HANDLING



MATCHMASTER™

A MATCHMASTER POWDER DISPENSER

The MatchMaster Powder Dispenser features pharmaceutical-grade scale components that enable .04-grain accuracy or better, providing the ultimate in precision. This high level of accuracy ensures that reloaders can produce the most accurate and consistent loads possible. Using the RCBS MatchMaster Powder Dispenser is easy and straightforward. Simply set the desired powder weight, and the dispenser does the rest. The unique design of the dual-tube technology ensures a rapid and precise powder charge delivery.

Overall, the RCBS MatchMaster Powder Dispenser is the ultimate tool for any reloader who demands the highest levels of precision and accuracy. Patented dual-tube dispense technology and pharmaceutical-grade scale components provide unrivaled precision and reliability, making it an essential tool for any serious reloader.

- Drastically reduce dispensing times with customizable parameters
- Dispenser learns and securely logs your load data for faster dispensing and easy reference
- Connect to RCBS app for load log, range results and much more

98941 MATCHMASTER POWDER DISPENSER



B CHARGEMASTER SUPREME

The RCBS ChargeMaster Supreme is an innovative powder dispenser that combines the best features of previous ChargeMaster models with cutting-edge technology to deliver the best measuring experience available. This powerful and accurate powder dispenser is designed to streamline the reloading process and deliver consistent and precise powder measurements every time.

The ChargeMaster Supreme features refinements that improve accuracy to 0.1-grain, delivering the highest levels of precision possible. Additionally, Bluetooth connectivity allows you to customize and streamline your dispensing processes, providing an enhanced user experience.

This powerful powder dispenser also features RCBS's proprietary "Powder Learn Process," which optimizes and calibrates the dispenser's performance to ensure the most accurate and consistent measurements possible.

Using the ChargeMaster Supreme Electronic Powder Dispenser is easy and straightforward. Simply set the desired powder weight and let the dispenser do the rest. The dispenser provides a highly accurate and consistent powder drop for each case, ensuring that reloaders get the same accurate measurements every time.

98943 CHARGEMASTER SUPREME



C CHARGEMASTER LINK

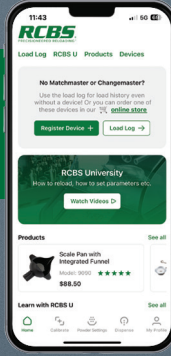
RCBS, the world leader in powder dispensing is proud to announce the ChargeMaster Link. Built off the rock-solid load cell and electronics of our ChargeMaster Lite™, the Link advances the powder measuring process with built-in Bluetooth that pairs with the updated RCBS app for a customized, streamlined powder dispensing experience. Using the RCBS ChargeMaster Link is easy. Simply download the RCBS app and pair it with the tool using the built-in Bluetooth functionality. The ChargeMaster Link's load cell and electronics are extremely accurate, providing precise measurements that are essential for consistent and reliable reloading. Its advanced technology ensures that you get accurate measurements every time, improving the efficiency and accuracy of your reloading process.

98944 CHARGEMASTER LINK



RCBS APP

To get the best Reloading Data download the RCBS APP from the App Store.



THE WORLD'S MOST ADVANCED POWDER DISPENSERS

RCBS's family of Precisioneered Reloading® dispensers combine industry-leading accuracy with the technology in your smartphone and our cutting-edge app. Choose from the compact, portable Chargemaster Link, the Chargemaster Supreme, or the Matchmaster, the gold standard in speed and match-winning precision with .04 grain accuracy available.

POWDER HANDLING



Powder Measure shown in photo not included



Powder Measure shown in photo not included



D ADVANCED POWDER MEASURE STAND

This stand will raise most Powder Measures 9-1/2" (with standard 7/8"-14 thread) leaving plenty of space for positioning a powder scale pan or cases in a loading block under the drop tube. Bolts easily to a reloading bench or table. Also serves as a stand for holding a Piggyback™ II, Piggyback—3 or —4 when not in use.

NOTE: Not for use with Little Dandy Powder Measure.

9092 ADVANCED POWDER MEASURE STAND

E POWDER TRICKLER SYSTEM COMBO

The RCBS® Powder Trickler System speeds up the process of weighing your powder charges. The Powder Trickler System attaches to any Uniflow™ or standard Quick Change powder measure. Used in conjunction with the Advanced Powder Measure Stand, the Powder Trickler System allows you to dispense and trickle a powder charge directly onto a scale pan without having to remove the scale pan for the initial filling. The unit can be adjusted for right or left handed use and the dispensing chute adjusts to allow you to drop the powder charge directly onto the scale pan. With a few turns of the Trickler handle, your weighed charge is complete. The Powder Trickler System is available as a combo only.

NOTE: Not for use with Quick Change High Capacity, Little Dandy or Black Powder Measure.

9091 POWDER TRICKLER SYSTEM COMBO (PTS AND APM)

F CASE ACTIVATED LINKAGE KIT

Convert the Uniflow™ Powder Measure (not included) for use on most progressive presses. The Uniflow Powder Measure can have the regular Measuring Screw or the optional Micrometer Adjustment Screw installed, depending on your preference. Three powder bushings are included for most popular rifle and pistol calibers: Small Rifle for .22 through .270 calibers, Large Rifle for 7mm through .45 calibers and Pistol for .32 through .45 calibers. The powder bushings are designed to eliminate powder spillage around the case mouth. Fully adjustable for all of the different variations in case length.

98911 CASE ACTIVATED LINKAGE KIT

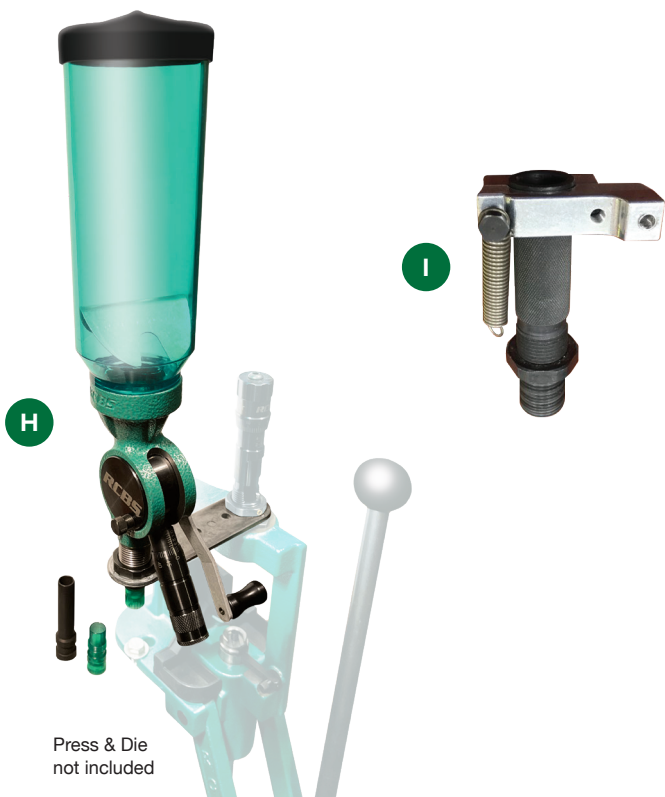
G UNIFLOW-3™ POWDER MEASURE

Throws consistently accurate charges reload after reload. Powder pours uniformly from measuring cylinder into case, thereby eliminating the hazards of "overloads" caused by clogging when charges are "dumped". Changes easily from charge to charge without emptying powder hopper. Numbered measuring screw is used for reference to find a given charge at a later date. The measuring cylinder has precision ground surfaces and slides into the honed main casting for a precision fit. Standard 7/8"-14 thread. Includes stand plate, drilled for easy mounting on a bench or under a reloading die lock ring. Two drop tubes for .22 caliber and up are supplied. The Uniflow™ Powder Measure is fully capable of accurately measuring all three major powder types—ball, cylindrical and flake. It will even cut the cylindrical powders so that a precise charge can be obtained.

⚠ NOTE: Do NOT use with black powder!

NOTE: The Powder Measure should be used in conjunction with an accurate powder scale for setting the original charge and for checking charges occasionally during the run.

9016 UNIFLOW POWDER MEASURE-3
86880 DUST COVER (NOT PICTURED)
9028 DROP TUBE .17 TO .20 CAL.



NEW

H UPM 3 COMPETITION POWDER MEASURE

The UPM-3 Competition Powder Measure accurately meters, by volume, all types of powder with extreme accuracy. RCBS's highest quality mechanical powder measure utilizes one cylinder for both rifle and pistol. The one cylinder can meter from .5 to 100 grains of powder, depending on powder type. The unit combines the proven Uniflow Powder Measure, with a powder baffle and a Micrometer Adjustment Screw. The Micrometer Adjustment Screw allows precise adjustments to the metered charge and lets reloaders record the number for future reference. The handle can be positioned on the right or left side. The UPM-3 Competition Powder Measure is best used with an RCBS powder scale for setting the original charge and checking charges.

⚠ NOTE: Do NOT use with black powder!
 NOTE: The Powder Measure should be used in conjunction with an accurate powder scale for setting the original charge and for checking charges occasionally during the run.

9032 UPM 3 COMPETITION POWDER MEASURE

I POWDER DIE

The Powder Die allows the Case Activated Powder Measure (CAPM) to be quickly moved from one Die Plate to another.

98912 POWDER DIE

J QUICK CHANGE HIGH CAPACITY POWDER MEASURE

The RCBS® Quick Change High Capacity Powder Measure offers the ability to dispense large rifle charges of up to 250 grains of smokeless powder. The large hopper can accommodate two pounds of smokeless powder. The QC HC PM features metering assemblies that change out with the pull of a pin. Extra metering assemblies can be purchased to have them preset for your favorite charges. The drain attachment empties the powder hopper without the need to remove it from the stand or press. Includes one metering assembly, .22-.270 Drop tube, .30-.45 Drop Tube, .50 Drop Tube and the QC HC Drain Attachment.

⚠ NOTE: Do NOT use with black powder!
 NOTE: The Powder Measure should be used in conjunction with an accurate powder scale for setting the original charge and for checking charges occasionally during the run.

98841 QC HC POWDER MEASURE
90227 QC HC POWDER BAFFLE

K QUICK CHANGE HIGH CAPACITY ACCESSORIES

The QC High Capacity Drop Tubes allow the use of these on existing Uniflow or QC powder measures.

NOTE: The Powder Measure should be used in conjunction with an accurate powder scale for setting the original charge and for checking charges occasionally during the run.

98853 QC DROP TUBE .30-.45
98852 QC DROP TUBE .22-.270

POWDER HANDLING



NEW

MATCHMASTER™

L MATCHMASTER POWDER FUNNEL KIT

The Matchmaster Powder Funnel is the fastest funnel on the market – bar none. RCBS's patent-pending system of precision adapters ensures any smokeless powder flawlessly and quickly flows into the case mouth. An anti-bridging design gives super-fast flow rates, while the high-strength aluminum funnel's anti-stick coating prevents powder from getting stuck inside. Available as a stand-alone funnel, individual 17 – 50 cal. adapters, or as a convenient kit with carry case, the MatchMaster Powder Funnel helps speed up your reloading without a grain of powder left behind.

- Fastest funnel available – aluminum or plastic
- Patent-pending powder flow technology
- Anti-stick coating
- System of precision-fit adapters
- Available as funnel +6 adapter kit, individual funnel, individual adapters, drop tube
- Limited lifetime warranty – backed by reloading's best customer service
- Made in the USA

- 98820 MATCHMASTER POWDER FUNNEL KIT
- 98821 MATCHMASTER POWDER FUNNEL
- 98822 MATCHMASTER POWDER FUNNEL ADAPTER 17
- 98823 MATCHMASTER POWDER FUNNEL ADAPTER 20
- 98824 MATCHMASTER POWDER FUNNEL ADAPTER 22
- 98825 MATCHMASTER POWDER FUNNEL ADAPTER 6MM
- 98826 MATCHMASTER POWDER FUNNEL ADAPTER 6.5MM
- 98827 MATCHMASTER POWDER FUNNEL ADAPTER 27
- 98828 MATCHMASTER POWDER FUNNEL ADAPTER 7MM
- 98829 MATCHMASTER POWDER FUNNEL ADAPTER 30
- 98830 MATCHMASTER POWDER FUNNEL ADAPTER 338
- 98831 MATCHMASTER POWDER FUNNEL ADAPTER 375
- 98832 MATCHMASTER POWDER FUNNEL ADAPTER 416
- 98833 MATCHMASTER POWDER FUNNEL ADAPTER 50
- 98834 MATCHMASTER POWDER FUNNEL ADAPTER PISTOL
- 98835 MATCHMASTER POWDER FUNNEL DROP TUBE



SCAN THE QR CODE TO WATCH THE MATCHMASTER FUNNEL IN ACTION



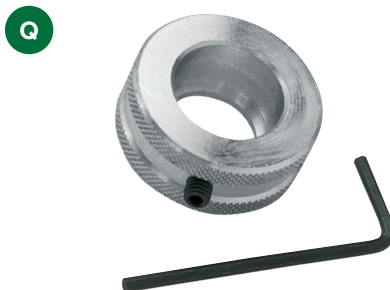
M POWDER BAFFLE

Uniform loads require consistent powder charges, and many handloaders find a baffle helps them throw more consistent charges. The baffle is specifically designed for the RCBS® Powder Measures and provides handloaders a uniform powder flow by controlling the gravity feed pressure of the powder column on the metering unit.

- 90225 POWDER BAFFLE
- 90226 QC POWDER BAFFLE
- 90227 QC HC POWDER BAFFLE



POWDER HANDLING



N QUICK CHANGE POWDER FUNNEL

With the current trend of large bodied rifle cases, existing powder funnels sometimes do not fit properly over the cases. The RCBS® Quick Change Powder Funnel eliminates that problem. The QC Powder Funnel features adapters that are supported by the body of the case and allow you to choose the optimum powder flow. The 4" drop tube helps to get that compressed powder charge into the case. The drop tubes are stackable so you can increase the drop length if necessary. With the adapters removed, the powder funnel allows you to return powder into the original container quickly.

9190 QUICK CHANGE POWDER FUNNEL KIT
(FUNNEL, 5 ADAPTERS AND ONE DROP TUBE)

O POWDER TRICKLER—2

Today's trend is to use electronic scales to measure powder charges. Many of these scales have scale pans that are positioned out of reach of existing powder tricklers. The Powder Trickler—2 solves this problem by adding a height adjustable, non-skid base and powder tube extension.

9089 POWDER TRICKLER—2

P POWDER FUNNEL

We've even managed to improve upon the basic plastic funnel. Ours features a specially designed drop tube to avoid any messy powder spills around case mouths, a non-stick, anti-static surface, plus a square lip to keep the funnel from rolling around. Spout will accommodate the WSM cartridges.

9087 POWDER FUNNEL .22-.50 CAL.
9086 POWDER FUNNEL .17-.20 CAL.

Q LITTLE DANDY™ ROTOR KNOB

Attaches to the Little Dandy™ Rotor with a setscrew, making the rotor easier to turn. Crafted of high-strength aluminum with knurled outer surfaces for maximum finger-touch control.

86046 LITTLE DANDY ROTOR KNOB

R LITTLE DANDY™ PISTOL POWDER MEASURE

Perfect for handloading pistol shooters and select small-caliber rifle shooters. There are 28 interchangeable fixed-charge powder rotors available and you can load any popular powder with the Little Dandy™ in up to 400 different load combinations. There's no readjustment needed after changeover. Can be used hand-held or conventional bench-mounted tool with optional Powder Measure Stand.

⚠ NOTE: Do NOT use with black powder!

NOTE: The Powder Measure should be used in conjunction with an accurate powder scale for setting the original charge and for checking charges occasionally during the run.

86040 LITTLE DANDY PISTOL POWDER MEASURE

98820	RCBS Aluminum Powder Funnel
98822	Aluminum Powder Adapter 17
98823	Aluminum Powder Adapter 20
98825	Aluminum Powder Adapter 6MM
98826	Aluminum Powder Adapter 6.5MM
98827	Aluminum Powder Adapter 27
98828	Aluminum Powder Adapter 7MM

98829	Aluminum Powder Adapter 30
98830	Aluminum Powder Adapter 338
98831	Aluminum Powder Adapter 375
98832	Aluminum Powder Adapter 416
98833	Aluminum Powder Adapter 50
98834	Aluminum Powder Adapter Pistol
98835	Aluminum Powder Adapter Drop Tube

SHELL HOLDERS

Shell Holder Number 1 9201	.308 Winchester	.35 Remington	6.8 Remington SPC	.416 Rigby
.218 Bee	7.65mm x 53 Belgian Mauser	Shell Holder Number 10 9210	.30 Remington	.450 Rigby Rimless
.25-20 Winchester	8mm-06	.17 Remington	.400 Legend	.50 Jeffery
.32-20 Winchester	8mm x 57 Mauser (8mm Mauser)	.17 Remington Fireball	Shell Holder Number 20 9220	Shell Holder Number 38 99238
Shell Holder Number 2 9202	.338 Federal	.204 Ruger	.45 Colt	6.5mm PRC
.22 Savage High-Power	.338-06/.338-06 A-Square	.221 Remington Fireball	.454 Casull	6.5 RSAUM
.25-35 Winchester	.35 Whelen	.222 Remington	Shell Holder Number 21 9221	.300 PRC
6.5mm x 55 Swedish Mauser	.358 Winchester	.222 Remington Magnum	.303 Savage	.26 Nosler
7-30 Waters	.370 Sako Magnum/9.3x66 Sako	.223 Remington (5.56mm)	Shell Holder Number 22 9222	.27 Nosler
.30-30 Winchester	9.3mm x 62 Mauser	.22 Nosler	11mm Mauser	.28 Nosler
.307 Winchester	.400 CorBon	6mm x 45	.43 Spanish	7mm Remington SA Ultra Magnum
.308 Marlin Express	.44 Auto Mag	7mm Thompson/Center Ugalde	Shell Holder Number 23 9223	7mm Remington Ultra Magnum
7.5mm x 54 French MAS	.45 Automatic (45 ACP)	.300 AAC Blackout	.32 H&R Magnum	.30 Nosler
7.5mm x 55 Schmidt-Rubin	.45 Glock Action Pistol	.350 Legend	.32 Smith & Wesson Long	.300 Remington SA Ultra Magnum
.32 Winchester Special	.450 Bushmaster	9mm x 18 Ultra	.327 Federal Magnum	.300 Remington Ultra Magnum
.32-40 Winchester	Shell Holder Number 4 9204	.380 Automatic Pistol	Shell Holder Number 24 9224	.33 Nosler
.356 Winchester	.257 Weatherby Magnum	Shell Holder Number 11 9211	.405 Winchester	.338 Remington Ultra Magnum
.360 Buckhammer	.264 Winchester Magnum	.220 Swift	Shell Holder Number 25 9225	.375 Remington Ultra Mag
.375 Winchester	6.5-300 Weatherby Magnum	Shell Holder Number 12 9212	8mm Nambu	Shell Holder Number 39 99239
.38-55 Winchester & Ballard	6.5 Remington Magnum	.17 Hornet	Shell Holder Number 26 9226	.38 Colt Super Auto (.38 ACP)
Shell Holder Number 3 9203	.270 Weatherby Magnum	.22 Hornet	7mm x 65 Rimmed	Shell Holder Number 40 99240
.22 Bench Rest	7mm Shooting Times Westerner	.22 K-Hornet	Shell Holder Number 27 9227	.475 Linebaugh
.22 Creedmoor	7mm Weatherby Magnum	Shell Holder Number 13 9213	.357 Sig	.480 Ruger
.22-250 Remington (22 Varminter)	.30-338 Winchester Magnum	7.62mm x 54R Russian	.40 S&W	Shell Holder Number 41 99241
.240 Weatherby Magnum	.300 H&H Magnum	Shell Holder Number 14 9214	10mm Auto	.404 Jeffery
.243 Winchester	.300 RCM	.30-378 Weatherby Magnum	Shell Holder Number 28 9228	Shell Holder Number 42 99242
6mm Bench Rest	.300 Weatherby Magnum	.338-378 Weatherby Magnum	.444 Marlin	.376 Steyr
6mm Creedmoor	.300 Winchester Magnum	.378 Weatherby Magnum	Shell Holder Number 29 9229	Shell Holder Number 43 99243
6mm Dasher	.308 Norma Magnum	.40-65 Shiloh Sharps - .408"	.25 Automatic (.25 ACP)	.223 Winchester Super Short Mag
6mm x 47 Lapua	8mm Remington Magnum	.40-70-2 1/2" Sharps Straight	Shell Holder Number 30 9230	.243 Winchester Super Short Mag
6mm GT	.338 RCM	.45-90-2.4" Sharps Straight	.30 Remington AR	.25 Winchester Super Short Mag
6mm Remington (244 Remington)	.338 Winchester Magnum	.45-100-2.6" Sharps Straight	.41 Magnum	.270 Winchester Short Magnum
6mm XC	.340 Weatherby Magnum	.45-110-2 7/8" Sharps Straight	Shell Holder Number 31 9231	6.8 Western
.25-06	.350 Remington Magnum	.45-120-3 1/4" Sharps Straight	.45-75 Winchester	7mm Winchester Short Magnum
.250 Savage (250-3000 Savage)	9.3mm x 74R	.45-70 U.S. Government	.450 x 400 Express 3" (.400	.300 Winchester Short Magnum
.257 Roberts	.375 H&H Magnum	Shell Holder Number 15 9215	Jeffery)	.325 Winchester Short Magnum
.257 Roberts Improved 40°	.375 Ruger	6.5mm x 50 Japanese Arisaka	Shell Holder Number 32 9232	Shell Holder Number 44 99244
.260 Remington	.416 Ruger	Shell Holder Number 16 9216	.22 ARC	.338 Marlin Express
6.5mm-06	.416 Remington Magnum	.30 Luger (7.65mm Luger)	.22 PPC	Shell Holder Number 45 99245
6.5-284 Winchester	.450 Marlin	.30 Mauser (7.63mm Mauser)	6mm ARC	5.7mm x 28 (FN)
6.5 Creedmoor	Shell Holder Number 5 9205	.356 TSW	6mm PPC	Shell Holder Number 46 99246
6.5mm x 47 Lapua	.348 Winchester	9mm FAR	6.5mm Grendel	.470 Nitro Express 3-1/4"
6.5mm x 57 Mauser	Shell Holder Number 6 9206	9mm Luger	7.62mm x 39-.308/.311	.500 Nitro Express 3"
6.5mm Weatherby RPM	.22 Remington Jet	9mm Makarov	7.7mm x 58 Japanese Arisaka	Shell Holder Number 47 99247
.270 Winchester	5.6mm x 50 Rimmed	9mm x 21	Shell Holder Number 33 9233	.505 Gibbs
.280 Ackley Improved (Nosler)	.357 Magnum	9mm x 23 Winchester	.50 Action Express	Shell Holder Number 48 99248
.280 Remington (7mm Exp. Rem.)	.357 Remington Maximum	Shell Holder Number 17 9217	Shell Holder Number 34 9234	.300 Norma Magnum
.284 Winchester	.38 Smith & Wesson	.30 M-1 Carbine	6.5mm x 68 S	.338 Norma Mag
7mm Bench Rest Remington	.38 Special	30 Super Carry	8mm x 68 S Magnum	.338 Lapua
7mm-08 Remington	Shell Holder Number 7 9207	.32 Automatic (7.65mm Auto)	Shell Holder Number 35 99235	Shell Holder Number 49 99249
7mm x 64 Brenneke	.30-40 Krag	Shell Holder Number 18 9218	.38-40 Winchester	.40-60 Winchester - .408"
7mm x 57 Mauser (7mm Mauser)	.303 British	.44 Magnum	.44-40 Winchester	.45-60 Winchester
7mm Remington Magnum	Shell Holder Number 8 9208	.44 S&W Russian	.45 S&W Schofield	
.30 T/C	.45 Auto Rim	.44 Special	Shell Holder Number 36 99236	
.30-06 Springfield	Shell Holder Number 9 9209	Shell Holder Number 19 9219	.45 Winchester Magnum	
.300 Savage	6.5 x 54 Mannlicher-Schoenauer	.224 Valkrie	Shell Holder Number 37 99237	

*Shoulder angle of improved version.

**If cartridge is not listed, consult the RCBS Special Order Catalog for appropriate shell holder.

SHELL HOLDERS



A

A SHELL HOLDER RACK

Do you keep all of your shell holders rolling around in one box? Have you ever had trouble finding the shell holder you need? With RCBS's Shell Holder Rack, you can keep your shell holders organized and protected. The Shell Holder Rack has 12 positions that hold two shell holders on each post. There is also room to store six Trim Pro® Shell Holders as well. The clear cover keeps out the dust and dirt while allowing you to see what is stored in the rack.

The Shell Holder Rack can be mounted on the wall or used on the bench. The wall mount spacing allows it to be hung off of standard 1" pegboard hooks as well. The support legs angle the bottom out for wall mounting or the top up for bench use. Additional Shell Holder Racks can be snapped together if more shell holder storage is needed.

9461 SHELL HOLDER RACK

5-STATION SHELL PLATES

Plate Size	Part Number
Number 1	88801
Number 2	88802
Number 3	88803
Number 4	88804
Number 5	88805
Number 6	88806
Number 7	88807
Number 8	88808
Number 9	88809

Plate Size	Part Number
Number 10	88810
Number 13	88813
Number 16	88816
Number 17	88817
Number 18	88818
Number 20	88820
Number 27	88827
Number 32	88832
Number 44	88844

For Pro 2000, AmmoMaster Auto, Piggyback and Piggyback II Progressive Presses

Note: The Piggyback and Piggyback II Progressive Presses are restricted to an overall cartridge length of 2.260". Check cartridge length before ordering Shell Plates.

See Reference Chart on page 42.



B

B STUCK CASE REMOVER

Our Stuck Case Remover extracts stuck cases from standard sizer dies without damaging the die, using a very simple two-step removal process.

9340 STUCK CASE REMOVER



C

C STUCK CASE REMOVER—2 KIT

The Stuck Case Remover—2 Kit lets you extract cases from dies with removable guide bushings. It's also useful for our Competition Dies or other sizer dies with a raised expander ball. Kit contains two extractor nuts and two punch rods.

9355 STUCK CASE REMOVER—2 KIT

REFERENCE CHARTS

Caliber	Shell Holder	Primer Plug & Sleeve Size	Case Trimmer Collet Number*	Case Trimmer Pilot Caliber
.17 Hornet	12	Small	2	17
.17 Remington	10	Small	1	17
.17 Remington Fireball	10	Small	1	17
.204 Ruger	10	Small	1	20
.218 Bee	1	Small	2	22
.22 ARC	32	Large	1	22
.22 Bench Rest	3	Small	3	22
.22 Creedmoor	3	Lg/Sm	1	22
.22 PPC	32	Small	3	22
.22 Hornet	12	Small	2	22
.22 K-Hornet	12	Small	2	22
.22 Remington Jet	6	Small	3	22
.22 Savage High-Power	2	Large	2	22
.22-250 Remington (22 Varminter)	3	Large	1	22
.220 Swift	11	Large	1	22
.221 Remington Fireball	10	Small	1	22
.222 Remington	10	Small	1	22
.222 Remington Magnum	10	Small	1	22
.223 Remington (5.56mm)	10	Small	1	22
.22 Nosler	10	Small	1	22
.223 Winchester Super Short Mag	43 (5)	Large	1	22
.224 Valkrie	19	Small	2	22
5.6mm x 50 Rimmed	6	Small	2	22
5.7mm x 28 (FN)	45	Small	4	22
.240 Weatherby Magnum	3	Large	1	24
.243 Winchester Super Short Mag	43 (5)	Large	1	24
.243 Winchester	3	Large	1	24
6mm ARC	32	Large	1	24
6mm Bench Rest	3	Small	3	24
6mm Creedmoor	3	Lg/Sm	1	24
6mm Dasher	3	Small	3	24
6mm PPC	32	Small	3	24
6mm x 45	10	Small	1	24
6mm x 47 Lapua	3	Large	1	24
6mm GT	3	Small	1	24
6mm Remington (244 Remington)	3	Large	1	24
6mm XC	3	Large	1	24
.25 Auto (25 ACP)	29 (6)	Small	4	(4)
.25 Winchester Super Short Mag	43 (5)	Large	1	25
.25-06	3	Large	1	25
.25-20 Winchester	1	Small	2	25
.25-35 Winchester	2	Large	2	25
.250 Savage (250-3000 Savage)	3	Large	1	25
.257 Roberts	3	Large	1	25
.257 Roberts Improved 40°	3	Large	1	25
.257 Weatherby Magnum	4	Large	1	25
.260 Remington	3	Large	1	26
.26 Nosler	38 (5)	Large	1	26
.264 Winchester Magnum	4/26	Large	1	26
6.5-300 Weatherby Magnum	4/26	Large	1	26
6.5 Remington Magnum	4/26	Large	1	26
6.5mm-06	3	Large	1	26
6.5-284 Winchester	3	Large	1	26
6.5 Creedmoor	3	Lg/Sm	1	26
6.5mm Grendel	32	Small	1	26
6.5mm x 47 Lapua	3	Large	1	26
6.5 x 54 Mannlicher-Schoenauer	9	Large	1	26
6.5mm PRC	38	Large	1	26
6.5mm x 55 Swedish Mauser	2	Large	1	26
6.5 RSAUM	38	Large	1	26
6.5mm x 57 Mauser	3	Large	1	26
6.5mm x 68S	34 (5)	Large	2	26
6.5mm Weatherby RPM	3	Large	1	26
6.8 Remington SPC	19	Large	2	27
6.8 Western	43	Large	1	27
.270 Weatherby Magnum	4	Large	1	27

Caliber	Shell Holder	Primer Plug & Sleeve Size	Case Trimmer Collet Number*	Case Trimmer Pilot Caliber
.270 Winchester	3	Large	1	27
.270 Winchester Short Magnum	43 (5)	Large	1	27
.27 Nosler	38 (5)	Large	1	27
.280 Ackley Improved (Nosler)	3	Large	1	28
.280 Remington (7mm Exp. Rem.)	3	Large	1	28
.28 Nosler	38 (5)	Large	1	28
.284 Winchester	3	Large	1	28
7mm Bench Rest Remington	3	Small	1	28
7mm PRC	38	Large	3	28
7mm Remington Magnum	4/26	Large	1	28
7mm Remington SA Ultra Magnum	38/4 (5)	Large	1	28
7mm Remington Ultra Magnum	38/4 (5)	Large	1	28
7mm Shooting Times Westerner	4	Large	1	28
7mm Thompson/Center Ugalde	10	Small	1	28
7mm Weatherby Magnum	4	Large	1	28
7mm-08 Remington	3	Large	1	28
7mm x 57 Mauser (7mm Mauser)	3	Large	1	28
7mm Winchester Short Magnum	43 (5)	Large	1	28
7mm x 64 Brenneke	3	Large	1	28
7mm x 65 Rimmed	26	Large	1	28
7-30 Waters	2	Large	2	28
.30 M-1 Carbine	17	Small	3	30
.30 Luger (7.65mm Luger)	16	Small	2	30
.30 Mauser (7.63mm Mauser)	16	Small	2	30
.30 Remington	19	Large	2	30
.30 Remington AR	30	Large	2	30
.30 T/C	3	Large	1	30
.30-06 Springfield	3	Large	1	30
.30-30 Winchester	2	Large	2	30
.30-338 Winchester Magnum	4	Large	1	30
.30-378 Weatherby Magnum	14 (5)	Large	4	30
.30-40 Krag	7	Large	3	30
.300 AAC Blackout	10	Small	1	30
.300 H&H Magnum	4	Large	1	30
.300 Norma Magnum	48	Large	1	30
.300 PRC	38	Large	1	30
.300 Remington SA Ultra Magnum	38/4 (5)	Large	1	30
.300 Remington Ultra Magnum	38/4 (5)	Large	1	30
.300 RCM	4	Large	1	30
.300 Savage	3	Large	1	30
.300 Weatherby Magnum	4	Large	1	30
.300 Winchester Magnum	4/26	Large	1	30
.300 Winchester Short Magnum	43 (5)	Large	1	30
.303 British	7	Large	1	31
.307 Winchester	2	Large	2	30
.308 Norma Magnum	4	Large	1	30
.308 Winchester	3	Large	1	30
.308 Marlin Express	2	Large	1	30
7.5mm x 54 French MAS	2	Large	1	30
7.5mm x 55 Schmidt-Rubin	2	Large	2	30
7.62mm x 39-.308/.311	32	Large	3	30/31
7.62mm x 54R Russian	13 (5)	Large	4	30
7.65mm x 53 Belgian Mauser	3	Large	1	31
7.7mm x 58 Japanese Arisaka	32	Large	1	31
30 Super Carry	12	Small	1	31
.32 Automatic (7.65mm Auto)	17	Small	1	31
.32 H&R Magnum	23	Small	1	31
.32 Smith & Wesson Long	23	Small	1	31
.327 Federal Magnum	23	Small	1	31
.32 Winchester Special	2	Large	2	32
.32-20 Winchester	1	Small	2	31
.32-40 Winchester	2	Large	2	32
8mm Remington Magnum	4	Large	1	32
8mm-06	3	Large	1	32
8mm x 57 Mauser (8mm Mauser)	3	Large	1	32
8mm x 68S Magnum	34 (5)	Large	2	32

REFERENCE CHARTS

Caliber	Shell Holder	Primer Plug & Sleeve Size	Case Trimmer Collet Number*	Case Trimmer Pilot Caliber
.325 Winchester Short Magnum	43 (5)	Large	1	32
.338 Federal	3	Large	1	33
.338 Lapua	48 (6)	Large	4	33
.30 Nosler	38 (5)	Large	1	30
.338 RCM	4	Large	1	33
.338 Marlin Express	44	Large	-	33
.338 Winchester Magnum	4	Large	1	33
.338-06/.338-06 A-Square	3	Large	1	33
.338 Norma Mag	48	Large	-	33
.33 Nosler	38/4 (5)	Large	1	33
.338 Remington Ultra Magnum	38/4 (5)	Large	1	33
.338-378 Weatherby Magnum	14	Large	4	33
.340 Weatherby Magnum	4	Large	1	33
.348 Winchester	5 (5)	Large	4	34
.35 Remington	9	Large	1	35
.35 Whelen	3	Large	1	35
.350 Legend	10	Small	1	35
.350 Remington Magnum	4	Large	1	35
.356 TSW	16	Small	2	35
.356 Winchester	2	Large	2	35
.357 Magnum	6	Small	3	35
.357 Remington Maximum	6	Small	3	35
.357 Sig	27	Small	3	35
.358 Winchester	3	Large	1	35
.360 Buck hammer	2	Large	2	35
9mm FAR	16	Small	2	35
9mm x 18 Ultra	10	Small	2	35
9mm Luger	16	Small	2	35
9mm Makarov	16	Small	2	35
9mm x 21	16	Small	2	35
9mm x 23 Winchester	16	Small	2	35
.370 Sako Magnum/9.3x66 Sako	3	Large	1	36
9.3mm x 62 Mauser	3	Large	1	36
9.3mm x 74R	4	Large	1	36
.375 H&H Magnum	4	Large	1	37
.375 Remington Ultra Mag	38/4 (5)	Large	1	37
.375 Ruger	4	Large	2	37
.375 Winchester	2	Large	2	37
.376 Steyr	42	Large	2	37
.378 Weatherby Magnum	14 (5)	Large	4	37
.38 Colt Super Auto (.38 ACP)	39	Small	2	35
.38 Smith & Wesson	6	Small	3	35
.38 Special	6	Small	3	35
.380 Automatic Pistol	10	Small	1	35
.38-40 Winchester	35 (5)	Large	1	40
.38-55 Winchester & Ballard	2	Large	2	37
.40 S&W	27	Small	3	40
.400 CorBon	3	Large	1	40
.40-70-2 1/2" Sharps Straight	14 (5)	Large	4	41
.404 Jeffery	41 (5)	Large	HC#2	n/a
.405 Winchester	24	Large	3	40

Caliber	Shell Holder	Primer Plug & Sleeve Size	Case Trimmer Collet Number*	Case Trimmer Pilot Caliber
10mm Auto	27	Large	3	40
.41 Magnum	30	Large	2	41
.416 Ruger	4	Large	1	416
.416 Rigby	37 (5)	Large	4	416
.416 Barrett	.50 BMG	.50 BMG	.50 BMG	416
.416 Remington Magnum	4	Large	1	416
.44 Auto Mag	3	Large	2	44
.44 Magnum	18	Large	2	44
.44 S&W Russian	18	Large	2	44
.44 Special	18	Large	2	44
.444 Marlin	28	Large	1	44
.44-40 Winchester	35 (5)	Large	1	44
.45 Automatic (45 ACP)	3	Large	1	45
.45 Auto Rim	8	Large	1	45
.45 Glock Action Pistol	3	Large	1	45
.45 Colt	20	Large	1	45
.45 S&W Schofield	35	Large	1	45
.45-60 Winchester	49 (6)	Large	4	45-R
.45-70 U.S. Government	14 (6)	Large	4	45-R
.45-75 Winchester	31 (5)	Large	4	45-R
.45-90-2.4" Sharps Straight	14 (5)	Large	4	45-R
.45-100-2.6" Sharps Straight	14 (5)	Large	4	45-R
.400 Legend	19	Large	2	40
.40-60 Winchester - .408"	49 (6)	Large	4	41
.40-65 Shiloh Sharps - .408"	14 (5)	Large	4	41
.45-110-2 7/8" Sharps Straight	14 (5)	Large	4	45-R
.45-120-3 1/4" Sharps Straight	14 (5)	Large	4	45-R
.450 Bushmaster	3	Large	1	45-R
.450 Marlin	4	Large	1	45-R
.450x.400 Express 3"(.400 Jeffery)	31 (5)	Large	.50 BMG	41
.450 Rigby Rimless	37 (5)	Large	HC#2	45-R
.454 Casull	20	Large	1	45
.458 Winchester Magnum	4	Large	1	45-R
.458 Lott	4	Large	1	45-R
.460 Weatherby Magnum	14 (5)	Large	4	45-R
.460 Smith & Wesson	4	Large	-	45
.460 Steyr	.50 BMG	.50 BMG	.50 BMG	45-R
.470 Nitro Express 3-1/4"	46 (6)	Large	HC #1	475
.475 Linebaugh 1.400"	40 (5)	Large	1	475
.480 Ruger	40 (5)	Large	1	475
.50 Action Express	33 (5)	Large	1	50
.50-70 Government	31 (5)	Large	4	50
.50-90 2-1/2" Sharps Straight	31 (5)	Large	4	50
.50-95 Winchester Express	31 (5)	Large	4	50
.500 Smith & Wesson	44 (5)	Large	-	50
.500 Jeffery	37 (5)	Large	HC #1	50-R
.500 Nitro Express	46 (6)	Large	HC #1	50-R
.56-50 Spencer	31 (5)	Large	-	50
.50 BMG	.50 BMG	.50 BMG	.50 BMG	50-R
.505 Gibbs	47 (6)	Large	.50 BMG	50-R

IMPORTANT: Note: When two Shell Holders are listed, the most popular is shown first. It may be necessary to use the alternate, depending on the manufacturer and/or lot of cases being used. Note: *Cases may be Berdan primed. Depriming and priming must be done by hand. If cases were formed from cases having boxer-type primers, use the appropriate Shell Holder for that caliber.

THE NUMERALS IN () IN THE TABLE INDICATE THE FOLLOWING:

- (2) Cases are usually Berdan primed. Depriming and priming must be done by hand. If cases are formed from cases having boxer-type primers, use the appropriate Shell Holder for that caliber.
- (4) Not Available
- (5) Auto 4 x 4 Shell Plate Not Available
- (6) Auto 4 x 4 and Five Station Shell Plates Not Available

RELOADING DIES

A



B



A PRECISIONEERED® DIES

For shooters who demand reloads equal to the quality of their guns. Each RCBS Die is made from case hardened steel. The inside surfaces of all dies are precision-drilled and reamed to the same exacting standards as the finest gun mechanisms.

Full-Length Sizer Dies for bottleneck cases have vents to prevent case damage caused by trapped air and for excessive lubricant. Headspace is held to minimum tolerances to avoid changing the case body length during full length sizing.

Dies are properly hardened and hand polished. This special RCBS finishing produces a die that will withstand years and years of the abrasive type of wear caused by case sizing.

All RCBS Seater Dies have a built-in roll or taper crimp as appropriate for the particular caliber. To seat bullets without crimping, simply unscrew the die until the crimp ring no longer engages the case mouth.

Large, easy-to-adjust hex lock rings utilize hex head set screws. Unless otherwise noted, all RCBS Precisioneer Dies have the standard 7/8"-14 thread. Dies are packaged in stackable, plastic storage boxes specially designed to protect the dies in shipping. Includes loading data label.

B TUNGSTEN CARBIDE DIE SETS (GROUPS B, C, & E)

The Carbide Sizer Die eliminates the need for case lubrication and cases do not need to be cleaned before sizing. Carbide Die Sets consist of a Carbide Sizer Die with Decapping Unit, Expander Die for expanding and belling the case mouth, plus a Seater Die with Roll or Taper Crimp and Bullet Seater Plug. Carbide Sizer Dies are also available separately. Available in most popular handgun calibers and .30 M-1 Carbine. See die listings for caliber availability.

Note: Due to the length of the .30 M-1 Carbine Carbide insert, every fourth or fifth case should be lightly lubricated to eliminate sticking cases.

2-DIE SETS (GROUPS A, D & SAFARI)

2-Die Sets are for bottleneck type rifle and pistol cases, and consist of a Full-Length Sizer Die with Expander-Decapping Unit, and a Seater Die with Bullet Seater Plug.

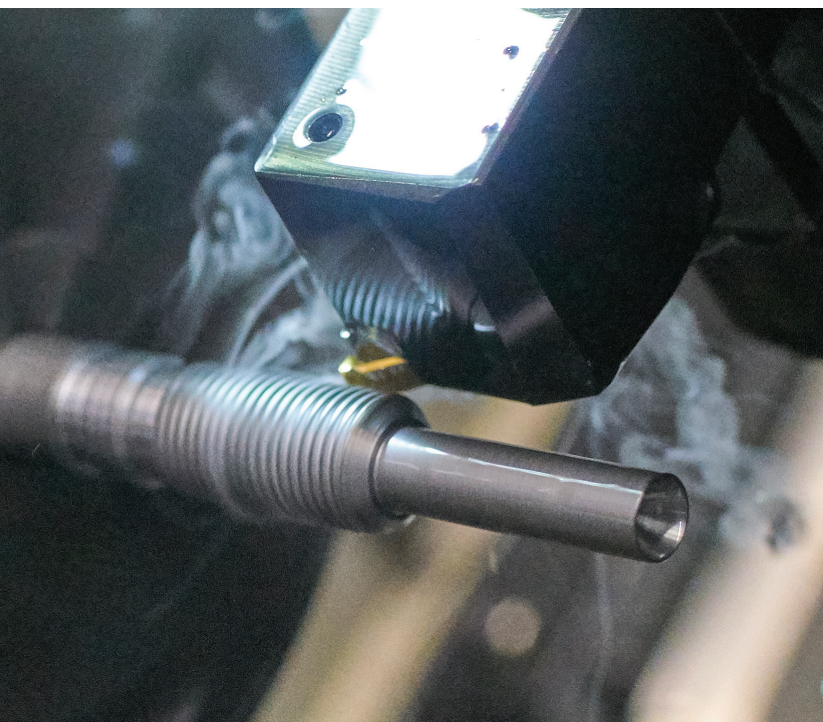
NECK DIE SETS (GROUPS A & D)

Neck Sizer Dies size only the neck of case (not the shoulder or body) just enough to snugly hold the bullet. Neck Die Sets consist of a Neck Sizer Die with Expander-Decapping Unit and a regular Seater Die with Seater Plug. Neck Sizer Dies are also available individually. Available in most calibers.

See listings on the following pages.

3-DIE SETS (GROUPS B, C, E, LEGACY & SAFARI)

RCBS pioneered and developed the 3-Die Sets for straight-wall rifle and pistol cases. In the 3-Die Set, sizing and expanding (belling) are done in separate dies. The 3-Die Set has a Sizer Die with Decapping Unit, Expander Die for expanding and belling the case mouth and a Seater Die with Roll or Taper Crimp and Bullet Seater Plug(s) for seating and crimping the bullet.

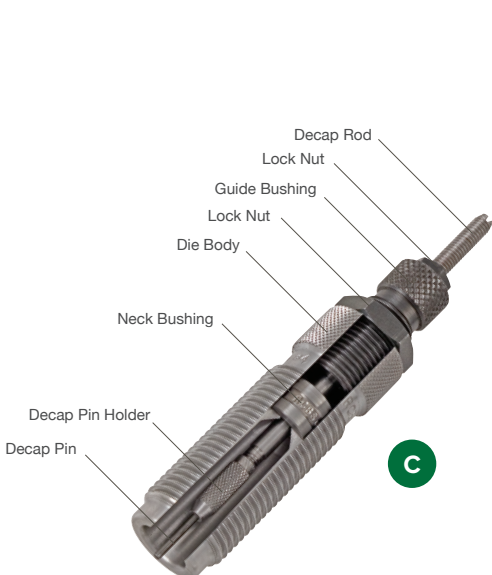




STEEL NECK BUSHINGS

Neck Bushing Diameter	Part Number	Neck Bushing Diameter	Part Number	Neck Bushing Diameter	Part Number	Neck Bushing Diameter	Part Number	Neck Bushing Diameter	Part Number	Neck Bushing Diameter	Part Number
0.186	81501	0.234	81549	0.259	81574	0.285	81600	0.310	81625	0.339	81654
0.187	81502	0.235	81550	0.260	81575	0.286	81601	0.311	81626	0.340	81655
0.191	81506	0.236	81551	0.261	81576	0.287	81602	0.312	81627	0.341	81656
0.200	81515	0.237	81552	0.262	81577	0.288	81603	0.313	81628	0.342	81657
0.202	81517	0.238	81553	0.263	81578	0.289	81604	0.314	81629	0.343	81658
0.203	81518	0.239	81554	0.264	81579	0.290	81605	0.315	81630	0.344	81659
0.204	81519	0.240	81555	0.265	81580	0.291	81606	0.316	81631	0.347	81662
0.214	81529	0.241	81556	0.266	81581	0.292	81607	0.317	81632	0.348	81663
0.215	81530	0.242	81557	0.267	81582	0.293	81608	0.318	81633	0.349	81664
0.216	81531	0.243	81558	0.268	81583	0.294	81609	0.323	81638	0.350	81665
0.217	81532	0.244	81559	0.269	81584	0.295	81610	0.324	81639	0.351	81666
0.218	81533	0.245	81560	0.270	81585	0.296	81611	0.325	81640	0.352	81667
0.219	81534	0.246	81561	0.271	81586	0.297	81612	0.326	81641	0.353	81668
0.220	81535	0.247	81562	0.272	81587	0.298	81613	0.327	81642	0.354	81669
0.221	81536	0.248	81563	0.273	81588	0.299	81614	0.328	81643	0.355	81670
0.222	81537	0.249	81564	0.274	81589	0.300	81615	0.329	81644	0.356	81671
0.223	81538	0.250	81565	0.275	81590	0.301	81616	0.330	81645	0.357	81672
0.224	81539	0.251	81566	0.276	81591	0.302	81617	0.331	81646	0.358	81673
0.225	81540	0.252	81567	0.277	81592	0.303	81618	0.332	81647	0.359	81674
0.226	81541	0.253	81568	0.278	81593	0.304	81619	0.333	81648	0.360	81675
0.227	81542	0.254	81569	0.280	81595	0.305	81620	0.334	81649	0.361	81676
0.228	81543	0.255	81570	0.281	81596	0.306	81621	0.335	81650	0.362	81677
0.229	81544	0.256	81571	0.282	81597	0.307	81622	0.336	81651	0.363	81678
0.230	81545	0.257	81572	0.283	81598	0.308	81623	0.337	81652	0.364	81679
0.233	81548	0.258	81573	0.284	81599	0.309	81624	0.338	81653	0.365	81680

MATCHMASTER™ RELOADING DIES



Matchmaster Bushing Die

Matchmaster full-length and neck sizing dies utilize RCBS's precision neck bushing system. Shoot more accurately with longer brass life.

C MATCHMASTER SERIES DIES

RCBS® is proud of our MatchMaster series of neck bushing rifle dies. This changeable diameter neck bushing type of die has been used by Bench Rest and Long Range Precision shooters for years.

Due to variability in neck brass thickness, RCBS standard dies size the neck below your desired diameter and then pull an expander ball through to get the proper bullet tension. The MatchMaster sizing die features a self-centering, changeable neck bushing that allows you to precisely set the amount of tension on the bullet. This reduces work hardening of the case neck brass, prolonging case life and increasing accuracy. The MatchMaster rifle dies are available in Full-Length and Neck sizing styles. By removing the neck bushing, the Full-Length sizing die can be used as a "bump" die to set headspace back the desired amount.

Neck bushings are not included. Proper neck bushing size can be determined two ways. Measure the outside neck diameter of your loaded cartridge, subtract .002" to .003". This allows approximately .001" of brass to spring back for correct neck tension. The other is to measure the neck wall thickness of your case, multiply by two, add the diameter of your bullet and subtract .001". RCBS suggests that you have neck bushings one to two sizes above and below your target diameter.

The MatchMaster seat dies feature a micrometer adjustable, free floating and self centering bullet seating system with a convenient bullet loading window. The cartridge specific bullet guide also has a convenient bullet retainer. The MatchMaster seat die can also be used on progressive presses.

MATCHMASTER™ SEATER DIES

NEW! ADDITIONAL SEATER DIE SIZES NOW AVAILABLE

Twelve new MatchMaster Seater Die sizes are now available for a host of cartridges. The pinnacle of RCBS dies, those seeking ultimate bullet seating precision choose MatchMaster Seater Dies.

.222 REMINGTON	10940
6MM REMINGTON	11540
.257 ROBERTS	12540
6.5MM GRENDDEL	18440
6.8MM WESTERN	28240
7X57 MAUSER	13840
.280 REMINGTON	14040
.280 ACKLEY IMPROVED	17040
.28 NOSLER	27440
300 AAC BLACKOUT	22440
7.62MM X 39	35040
.338 WINCHESTER	16340



MATCHMASTER DIES

Caliber	Full Length Bushing Die Set	Neck Bushing Die Set	Match Master Seater Die	Exp Decap Unit
.204 RUGER	10308	10310	10340	9845
.22 CREEDMOOR	10108	10110	10140	9847
.22 HORNET	10208	10210	10240	9846
.22-250 REM	10608	10610	10640	9846
.222 REM	—	—	10940	—
.223 REM	11108	11110	11140	9846
.224 VALKYRIE	11208	11210	11240	9846
6MM ARC	28008	28010	28040	9848
6MM BR REM	16108	16110	16140	9849
6MM CREEDMOOR	31808	31810	31840	9849
6MM DASHER	12308	12310	12340	9849
6MM GT	32308	32310	32340	9849
6MM REM	—	—	11540	—
6MM XC	17108	17110	17140	9849
6MMX47 LAPUA	11908	11910	11940	9848
.243 WIN	11408	11410	11440	9848
.25-06 REM	12008	12010	12040	9856
.257 ROBERTS	—	—	12540	—
6.5MM CREEDMOOR	32908	32910	32940	9851
6.5MM GRENDDEL	—	—	18440	—
6.5MM PRC	32108	32110	32140	9850
6.5MM RSAUM	31908	31910	31940	9850
6.5MM-284 WIN	28708	28710	28740	9850
6.5MMX47 LAPUA	12908	12910	12940	9851
6.5MMX55 SWEDISH MAUSER	13208	13210	13240	9850
.260 REM	12808	12810	12840	9850
.270 WIN	13508	13510	13540	9852
6.8MM WESTERN	—	—	28240	—
.28 NOSLER	—	—	27440	—
.280 ACKLEY IMPROVED	—	—	17040	—
.280 REM	—	—	14040	—
7 X 57 MAUSER	—	—	13840	—
7MM PRC	28108	28110	28140	9853
7MM REM MAG	13608	13610	13640	9853
7MM-08 REM	13908	13910	13940	9853
.300 AAC BLACKOUT	—	—	22440	—
.300 NORMA MAG	31508	31510	31540	9854
.300 PRC	28608	28610	28640	9857
.300 RUM	17608	17610	17640	9857
.300 WIN MAG	15308	15310	15340	9857
.300 WSM	30808	30810	30840	9854
.30-06 SPRINGFIELD	14808	14810	14840	9854
.308 WIN	15508	15510	15540	9854
7.62 X 39	—	—	35040	—
8MMX57 MAUSER	15908	15910	15940	9855
.338 LAPUA	16608	16610	16640	9858
.338 WINCHESTER	—	—	16340	—

GROUP A								
Caliber	Full-Length Die Set	Full-Length Sizer Die	Neck Die Set	Neck Sizer Die	Small Base Die Set	Small Base Sizer Die	Seater Die	Exp-Decap Unit
.17 REM	17201	—	—	—	—	—	—	9882
.17 REM FIREBALL	16201	—	—	—	—	—	—	9882
.204 RUGER	10301	—	10302	10330	—	—	—	9801
.218 BEE	10001	—	—	—	—	—	—	9802
.22 ARC	30201	—	—	—	—	—	—	9802
.22 HORNET	10201	—	10202	—	—	—	—	9802
.22-250 REM	10601	—	10602	10630	—	—	—	9802
.220 SWIFT	10701	—	—	—	—	—	—	9802
.221 REM FIRE BALL	10801	—	—	—	—	—	—	9802
.222 REM	10901	—	10902	10930	—	—	—	9802
.222 REM MAG	11001	—	—	—	—	—	—	9802
.223 REM (5.56MM)	11101	11129	11102	11130	11103	11131	11138	9802
.223 WIN SUPER SHORT MAG	10501	—	—	—	—	—	—	9800
.240 WBY MAG	33201	—	—	33230	—	—	—	9805
.243 WIN	11401	—	11402	11430	11403	—	—	9805
.243 WSSM	11601	—	—	—	—	—	—	9805
6MM ARC	28001	—	—	—	—	—	—	9805
6MM REM (.244 REM)	11501	—	—	—	—	—	—	9805
6MM PPC	22601	—	—	—	—	—	—	9837
.25-06	12001	—	12002	12030	—	—	—	9806
.25 WSSM	12401	—	—	—	—	—	—	9806
.25-20 WIN	11801	—	—	—	—	—	—	9806
.25-35 WIN	12101	—	—	—	—	—	—	9806
.250 SAV (.250-3000 SAVAGE)	12201	—	—	—	—	—	—	9806
.257 ROBERTS	12501	—	—	—	—	—	—	9806
.257 WBY MAG	12601	—	12602	—	—	—	—	9806
6.5 CREEDMOOR	32901	—	—	32930	—	—	32938	9807
6.5MM GRENDEL	18401	—	—	—	—	—	—	9807
.260 REM	12801	—	—	12830	—	—	—	9807
.264 WIN MAG	12701	—	12702	—	—	—	—	9807
6.5X55 SWEDISH MAUSER	13201	—	13202	13230	—	—	—	9807
6.8 REM SPC	13301	—	—	—	13303	—	—	9808
6.8 WESTERN	28201	—	—	—	—	—	—	9808
.270 WBY MAG	13401	—	—	—	—	—	—	9808
.270 WIN	13501	—	13502	13530	13503	—	—	9808
.270 WIN SHORT MAG	31301	—	—	—	—	—	—	9808
.280 REM (7MM EXP REM)	14001	—	—	—	—	—	—	9809
.284 WIN	14101	—	—	—	—	—	—	9809
7MM PRC	28101	—	—	—	—	—	—	9809
7MM REM MAG	13601	—	13602	13630	13603	—	—	9809
7MM REM SA ULTRA MAG	31101	—	—	—	—	—	—	9809
7MM REM ULTRA MAG	17801	—	—	—	—	—	—	9809
7MM STW	26601	—	26602	—	—	—	—	9809
7MM T/CU	34201	—	—	—	—	—	—	9809
7MM WBY MAG	13701	—	—	—	—	—	—	9809
7MM WIN SHORT MAG	31401	—	—	—	—	—	—	9809
7MM-08 REM	13901	—	13902	13930	—	—	—	9809
7X57 MAUSER (7MM MAUSER)	13801	—	13802	—	—	—	—	9809
7MMX64 BRENNER	34001	—	—	—	—	—	—	9809
7-30 WATERS	34801	—	—	—	—	—	—	9809
7.5MMX% SCHMIDT-RUBIN	33501	—	33502	—	—	—	—	9812
7.62MMX54R RUSSIAN	29001	—	29002	29030	—	—	—	***
7.62MMX39 (.308/311)	35001	—	—	—	—	—	—	**
7.65MMX53 BELGIUM MAUSER	14301	—	—	—	—	—	—	9814
7.7MMX58 JAPANESE ARISAKA	14401	—	—	—	—	—	—	9814
.30 LUGER (7.65MM MAUSER)	25001	—	—	—	—	—	—	9813
.30-06 SPRINGFIELD	14801	—	14802	14830	14803	14831	—	9812
.30-30 WIN	14601	—	14602	—	—	—	—	9812
.30-378 WBY MAG	29501	—	—	—	—	—	—	9812
.30-40 KRAG	14701	—	—	—	—	—	—	9812
.300 RCM	26901	—	—	—	—	—	—	9812

RELOADING DIES

GROUP A (CONTINUED)								
Caliber	Full-Length Die Set	Full-Length Sizer Die	Neck Die Set	Neck Sizer Die	Small Base Die Set	Small Base Sizer Die	Seater Die	Exp-Decap Unit
.300 REM SA ULTRA MAG	31201	—	—	—	—	—	—	9812
.300 REM ULTRA MAG	17601	—	17602	17630	—	—	—	9812
.300 SAVAGE	15101	—	—	—	—	—	—	9812
.300 WBY MAG	15201	—	15202	—	—	—	—	9812
.300 WIN MAG	15301	—	15302	15330	15303	—	—	9812
.300 WIN SHORT MAG	30801	—	30802	—	—	—	—	9812
.303 BRITISH	15401	—	15402	15430	—	—	—	9814
.308 MARLIN EXPRESS	14901	—	—	—	—	—	—	9812
.308 WIN/.307 WIN	15501	15529	15502	15530	15503	15531	—	9812
8MMX57 MAUSER	15901	—	15902	15930	—	—	—	9817
8MM REM MAG	16001	—	—	—	—	—	—	9817
.32 WIN SPEC	15701	—	—	—	—	—	—	9816
.325 WIN SHORT MAG	31601	—	31602	—	—	—	—	9817
.338 RCM	27301	—	—	—	—	—	—	9828
.338 FEDERAL	17301	—	—	—	—	—	—	9828
.338 REM ULTRA MAG	17701	—	—	—	—	—	—	9818
.338 WIN MAG	16301	—	16302	—	—	—	—	9818
.338 LAPUA	16601	—	16602	16630	—	—	—	9818
.338-378 WBY MAG	16801	—	—	—	—	—	—	9818
.340 WBY MAG	30601	—	—	—	—	—	—	9818
.35 REM	16501	—	—	—	—	—	—	9820
.35 WHELEN	30701	—	—	—	—	—	—	9823
.357 SIG	23101	—	—	—	—	—	—	9834
.358 WIN	32701	—	—	—	—	—	—	9823
9.3MMX62 MAUSER	34501	—	34502	—	—	—	—	9821
.375 H&H MAG	16901	—	16902	—	—	—	—	9822
.375 REM ULTRA MAG	30901	—	—	—	—	—	—	9822
.375 RUGER	26801	—	—	—	—	—	—	9822

*If not in stock, please allow 4-6 weeks for delivery. **A .30 caliber Expander Ball is also included with Die Set and Sizer Die. ***A .310 caliber Expander Ball is also included with Die Set and Sizer Die. +See the RCBS Special Catalog for this item.

GROUP B										
Caliber	3-Die Carbide Roll Crimp Set	3-Die Carbide Taper Crimp Set	3-Die Roll Crimp Set	3-Die Taper Crimp Set	Carbide Sizer Die	Steel Sizer Die	Roll Crimp Seater Die	Taper Crimp Seater Die	Decap Unit	
.32 AUTO (1)	—	20015	—	—	—	—	—	20062	9622	
.357 MAG/.357 REM MAX/.38 SPL	18212	18215	—	—	18237	—	18342	18262	9622	
9MM LUGER/9X21/.356 TSW/9X23 WIN/9X18 ULTRA	—	20515	—	—	20537	—	—	20562	9622	
.380 AUTO	—	20415	—	—	—	—	—	—	9622	
.40 S&W/10MM AUTO	—	22115	—	—	—	—	—	22162	9622	
.41 MAG	18512	—	—	—	—	—	18542	—	9622	
.44 MAG/.44 SPL	18612	—	18608	—	18637	—	18742	18662	9622	
.44-40 WIN (3)	—	—	18805	—	—	—	—	—	9622	
.44-.40 WIN JACKETED (4)	—	—	18806	—	—	—	—	—	9622	
.45 AUTO(ACP)/AUTO RIM/45 GAP	—	18915	—	—	18937	—	18942	18962	9622	
.45 COLT	19112	—	19108	—	—	—	—	—	9622	
.460 S&W	24212	—	—	—	—	—	—	—	9622	
.454 CASULL	23212	—	—	—	—	—	23242	—	9622	
.480 RUGER/.475 LINEBAUGH 1.400"	38217	—	35208	—	—	—	35238	—	9622	
.50 ACTION EXPRESS	—	22210	—	—	—	—	—	22262	9622	
.500 S&W/.500 SPL	23812	—	23808	—	—	—	23838	—	9622	

*May not be available from stock. 1: For use with .311" bullets. 2: For use with .314" bullets. 3: Regular Seater Die for all lead and jacketed bullets from Hornady, Sierra and Speer. 4: Jacketed Seater Die for Remington bullets only. **Not for use with .45 Auto Rim or .45 GAP.

GROUP C						
Caliber	3-Die Carbide Taper Crimp Set	3-Die Roll Crimp Set	3-Die Taper Crimp Set	Roll Crimp Seater Die	Taper Crimp Seater Die	Decap Unit
.30 M-1 CARBINE	18017	—	18010	—	20062	9622
.350 LEGEND	—	21904	—	—	21962	9622
.360 BUCKHAMMER	—	28304	—	—	—	9622
.375 WIN	—	20604	—	—	—	9619
.400 LEGEND	—	22004	—	—	—	9622
.444 MARLIN	—	20704	—	—	—	9619
.45-70 US GOV'T	—	20904	—	—	—	9619
.450 MARLIN	—	33504	—	—	—	9619
.450 BUSHMASTER	—	21604	—	—	21662	9622
.485 WIN MAG	—	20804	—	—	—	9619
.458 LOTT	—	24101	—	—	—	9619

*May not be available from stock.

GROUP D						
Caliber	Full-Length Die Set	Neck Die Set	Neck Sizer Die	Small Base Die Set	Small Base Sizer Die	Exp-Decap Unit
.17 HORNET	21801	—	—	—	—	9882
.22 CREEDMOOR	10101	—	—	—	—	9802
.22 K-HORNET	26201	—	—	—	—	9802
.22 REM JET	10401	—	—	—	—	9800
.22 SAVAGE HI POWER	33801	—	—	—	—	9803
.22 NOSLER	29701	—	—	—	—	9802
.224 VALKRIE	11201	—	—	—	11231	9802
5.6MMX50 RIMMED	26301	—	—	—	—	9802
5.7MMX28 (FN)	11701	—	—	11703	—	9802
.257 ROBERTS IMPROVED	32201	—	—	—	—	9806
6MMX45	28901	—	—	—	—	9805
.26 NOSLER	26501	—	—	—	—	9807
6MM CREEDMOOR	31801	—	—	—	31831	9805
6MM GT	32301	—	—	—	—	9837
.27 NOSLER	26401	—	—	—	—	9808
.280 ACKLEY IMPROVED	17001	—	—	—	—	9809
.28 NOSLER	27401	—	—	—	—	9807
6.5MM RSAUM	31901	—	—	—	—	9806
6.5MM PRC	32101	—	—	—	—	9806
6.5MM-06	27801	—	—	—	—	9807
6.5MM-300 WBY	31701	—	—	—	—	9807
6.5MM WBY RPM	22501	—	—	—	—	9807
6.5MM REM MAG	33401	—	—	—	—	9807
6.5MM-284 WIN	28701	—	—	—	—	9807
6.5MMX47 LAPUA	12901	12902	—	—	—	9807
6.5MMX54 MANNLICHER SCHOEN.	27701	—	—	—	—	9807
6.5MMX57 MAUSER	32801	—	—	—	—	9807
6.5MMX68 S	27901	—	—	—	—	9807
7MM B R REM	34101	—	—	—	—	9809
7MMX65 RIMMED	26701	—	—	—	—	9809
.30 MAUSER (7.63MM MAUSER)	25401	—	—	—	—	9813
.30 REM	29201	—	—	—	—	9812
.30 NOSLER	29250	—	24251	—	—	9812
.30 REM AR	25301	—	—	—	—	9812
.300 AAC BLK	22401	—	—	—	—	9812
.30-338 WIN MAG	29401	—	—	—	—	9812
.300 H&H MAG	15001	—	—	—	—	9812
.300 NORMA MAG	31501	—	—	—	—	9812
.300 PRC	29601	—	—	—	—	9812
.308 NORMA MAG	15601	—	—	—	—	9812
7.5MMX54 FRENCH MAS	29101	—	—	—	—	9832
.32-40 WIN	32501	—	—	—	—	9816
8MM-06	32601	—	—	—	—	9817
8MMX68 S MAG	34401	—	—	—	—	9817
.33 NOSLER	29301	—	—	—	—	9818
.338-06/.338-06 A-SQUARE	16701	—	—	—	—	9828
.338 NORMA MAG	13001	—	—	—	—	9818
.338 WBY RPM	28401	—	—	—	—	9818
.348 WIN	33601	—	—	—	—	9819
.350 REM MAG	33701	—	—	—	—	9820
9.3MM X 74 RIMMED	34601	—	—	—	—	9821
.378 WBY MAG	33001	—	—	—	—	9822
.416 RUGER	13101	—	—	—	—	9827
.416 REM MAG	22701	—	—	—	—	9827
.416 RIGBY	22801	—	—	—	—	9825
.460 WBY MAG	33101	—	—	—	—	9826

*If not in stock, allow 4-6 weeks for delivery. ^Includes extended shell holder.

GROUP E					
Caliber	3-Die Carbide Taper Crimp Set	3-Die Carbide Roll Crimp Set	3-Die Roll Crimp Set	Roll Crimp Seater Die	Decap Unit
.30 SUPER CARRY	35315	—	—	—	9622
.327 FED/.32 S&W L/H&R MAG	21415	21412	—	—	9622
.32-20 WIN	—	—	18105	—	9622
9MM MAKAROV	23015	—	—	—	9622
.38 COLT SUPER AUTO/ACP	20215	—	—	—	9622
.38-40 WIN	—	—	35605	—	9622
.44 AUTO MAG	56541	—	—	—	9622

* May not be available from stock. ** 9mm FAR is a steel sizing die with taper crimp. 1: For use with lead bullets only. Δ Not for use with .327 Fed Mag.

LEGACY SERIES DIES

With new calibers and rifles introduced every year, it is a wonder that black powder cartridges are still around! The Legacy series of dies supports these legendary metallic black powder cartridges and the enthusiasts that are shooting original or reproduction black powder rifles.

LEGACY SERIES DIES		
Caliber	Full Length Die Set	Exp Decap Unit
.38-55 WINCHESTER BALLARD	36504	9619
.40-65 SHILOH SHARPS (.408 BORE)	23304	9619
.40-70-2 1/2" SHARPS STRAIGHT	19204	9619
.405 WINCHESTER	23608	9619
.45-60 WINCHESTER	19804	9619
.45-75 WINCHESTER	19904	9619
.45-90-2.4" SHARPS STRAIGHT	19304	9619
.45-100-2.6" SHARPS STRAIGHT	19404	9619
.45-110-2 7/8" SHARPS STRAIGHT	19504	9619
.45-120-3 1/4" SHARPS STRAIGHT	19604	9619
.50-70 GOVERNMENT	36804	9619
.50-90-2 1/2" SHARPS STRAIGHT	19704	9619
.50-95 WINCHESTER EXPRESS	21304	9619
.56-50 SPENCER	20104	9619
.56-50 SPENCER	20104	9619

RELOADING DIES



D 1-1/2" -12 DIES

The dies are precision machined by the same craftsmen that produce our Precisioneered® Reloading Dies. The Full Length Sizer Die is drilled and reamed to the dimensions developed over the years. Then each die is hand polished, heat treated and then repolished. These massive dies are designed for use with the AmmoMaster—2 or the AmmoMaster® Single Stage Press with the .50 BMG Conversion Kit installed. All Dies listed here are manufactured with 1-1/2"-12 thread. Full Length Die Set includes Full Length Sizer Die with Expander-Decapping Unit and Seater Die with Bullet Seater Plug. Trim Die is case hardened to prevent damage to the die when filing cases to length. Neck Sizer Die sizes only the neck, not the shoulder and body.

1-1/2" DIES		
Caliber	Full Length Die Set	Exp Decap Unit
F L DIE SET 416 BARRETT	14501	9840
FL DIE SET .50 BMG 1-1/2"	30001	9838
TRIM .50 BMG 1-1/2"	30065	-

SEAT PLUG ASSEMBLIES — .50 BMG	
Caliber	
Seat Plug Assy .50 BMG A-Max (5/8-18)	90093

E SAFARI DIES

Straight out of the RCBS® Special Order and listed at a reduced price. The Safari Series represents cartridges typically used for dangerous game in Africa. These featured calibers were chosen based on production rifles from CZ®, Ruger® and others that offer these timeless African hunting classics.

The .500 Jeffery and .505 Gibbs are made on 1" die bodies and require a press adapter bushing (not included).

SAFARI DIES				
Caliber	Full-Length Die Set	3-Die Roll Crimp Set	3-Die 1" Roll Crimp Set	Decap Unit
.404 JEFFERY	24301	—	—	—
.450 x 400 EXPRESS 3" (.400 JEFFERY)	24401	—	—	9804
.450 RIGBY RIMLESS	23001	—	—	9826
.470 NITRO EXPRESS 3-1/4"	24601	—	—	—
.500 JEFFERY	—	—	24704*	9619
.500 NITRO EXPRESS 3"	—	24804	—	9619
.505 GIBBS	—	—	24904*	9619

*Requires 1" press adapter bushing, not included. NOTE: RC Supreme comes standard with a 1-1/4"-12 to 7/8"-14 press bushing adapter.



F AR SERIES DIES

A must for the progressive reloader. It features a Small Base sizing die and a new Taper Crimp seating die. This combination makes reloading easier for AR-style or semi-auto shooters. The Small Base sizer guarantees that the cartridge will rechamber. The Taper Crimp Seater is more forgiving when various case lengths are loaded at the same time. Case neck crimp bulges and buckled shoulders are virtually eliminated when Taper crimping is used with cannellured bullets.

AR DIES		
Caliber	Small Base Die Set	Taper Crimp Seater Die
.204 RUGER	10307	—
.223 REM/5.56MMX45	11107	11162
.22 ARC	30207	—
.22 NOSLER	29707	—
.224 VALKYRIE	11207	—
6MM ARC	28007	—
6MMX45	28907	—
.243 WIN	11407	—
6.5MM CREEDMOOR	32907	32962
6.5MM GRENDDEL	18407	—
.260 REM	12807	—
6.8MMX43 REM SPC	13307	—
7.62X39	35007	—
.308 WIN	15507	15562
.300 AAC BLK	22407	22462
.30-06 SPRINGFIELD	14807	—
.338 FEDERAL	17307	—

G COWBOY SHOTSHELL DIE

The diehard Cowboy Action Shooter not only uses authentic firearms and loads with black powder, but also dresses the part. Many would like to use period correct all brass shotshell ammunition, but with no good way to reload them, colorful plastic hulls continue to be used. Today's modern shotshell presses can handle the powder drop, wad seating and shot drop, but could do nothing to handle the sizing, de-priming, re-priming and crimp of a brass case. The RCBS® Cowboy Shotgun die answers this need.

Designed to be used in any RCBS single stage press with a removable die bushing, it performs just like a rifle sizing die. The Cowboy Shotgun Die will first size and de-prime the case; Re-priming is done with the standard priming provided with the press. Use your shotgun press to fill the case with powder, seat the wad and spacers and dispense your shot charge. Remove the sizing ring and install the finish crimp. Place your over shot card onto the shot charge and run up into the die to roll crimp the case mouth. A newly handloaded brass shotshell is completed.

- 99060 COWBOY SHOTSHELL DIE
- 99061 12 GA SHELL HOLDER - BRASS CASE

RELOADING DIES



H

H X DIE®

Trim the case once—never trim again! The X-Sizer Die looks like a regular Full Length Sizer Die. Inside, the die features a specially designed mandrel with an expander ball and decapping pin attached. The mandrel is what the X-Die® is all about. The patented X-Sizer Die eliminates the need for repeated trimming after an initial trim of .020” off the maximum case length to standardize the case. The X-Die doesn’t shorten the length of the case: the mandrel reduces the growth rate as the case grows as a result of the case mouth-contacting the mandrel during sizing. Because of an extremely close tolerance between the mandrel and die neck wall, the neck wall of the case does not thicken as the case length is pushed back. Cases repeatedly sized in the X-Die will initially grow a few thousandths of an inch, then stabilize below the maximum case length with no discernable loss of accuracy or case life.

Available in most popular bottleneck calibers as shown in the chart.

Standard 7/8”-14 thread. U.S. Patent # 5635661

If you are just starting to reload any of the calibers listed, order the X-Full Length Die Set containing the X-Sizer Die and Standard Seater Die. If you already own a regular set of dies for the chosen caliber, order only the X-Full Length Sizer Die, as you won’t need to purchase another Seater Die.

X DIE CHART			
Caliber	X Full-Length Die Set	X Full-Length Sizer Die	X Mandrel Assembly
.22-250 REM	37112	–	37114
.223 REM	37212	37109	37214
.223 REM SMALL BASE	38862	38859	37214
.243 WIN	37312	–	37314
.25-06	38962	–	38964
6.5 X 55 SWEDISH MAUSER	38412	–	38414
.270 WIN	37512	–	37514
7MM REM MAG	37612	–	37614
7MM-08 REM	37412	–	37414
.30-06 SPRINGFIELD	37712	–	37714
.30-06 SPRINGFIELD SMALL BASE	–	39159	37714
.30-30 WIN	37912	–	37914
.300 WBY MAG	39212	–	39214
.300 WIN MAG	38912	–	38914
.308 WIN	37812	37809	37814
.308 WIN SMALL BASE	39262	39259	37814
.338 WIN MAG	39312	–	39314

ALTERNATE SEATER PLUGS (SPECIAL APPLICATION)

These through-the-top seater plugs (1/2" - 20 thread) are available separately and manufactured to fit bullets shown in the chart below. They are not furnished with the die sets or seater dies. Seater plugs with 1/4" - 28 thread design, are for use with older RCBS® dies and can be made on a special order basis. Call or write RCBS for information.

ALTERNATE SEATER PLUGS — 1/2"-20	
38 Cal. 125 gr. Gold Dot	90065
9mm Cal. 115 gr. Gold Dot	90061
9mm Cal. 124 gr. Gold Dot	90062
9mm Cal. 147 gr. Gold Dot	90063
40/10mm 155 gr. Gold Dot	90067
40/10mm 165 gr. Gold Dot	90074
40/10mm 180 gr. Gold Dot	90068
10mm Round Nose	90039
44 Cal. 240 gr. Silhouette	90031
44/45 SWC	90033
45 Cal. 230 gr. Gold Dot	90070
45 Cal. 500 gr. Black Powder Silhouette	90080

REPLACEMENT DECAPPING PINS

With the few exceptions listed above, all RCBS® "Precision," Reloader Special, X and Cowboy Sizer Dies require a #90164 headed Decapping Pin— one size fits all calibers. Order straight Decapping Pins for Competition and older "Precision" Sizer Dies.

Pow'r Punch Decap Assembly for use with pistol calibers in progressive presses.

REPLACEMENT PARTS

Expander-Decapping Rods, Decapping Rods, Expander Balls and Decapping Pin Holders are no longer available separately. If any of these fail, order a replacement Expander-Decapping Unit or Decapping Unit as shown in the tables.

DECAPPING PINS — 5-PACK	
6mm PPC	9608
7mm Thompson Center Ugalde	9609
35 Whelen	9609
357 SIG	9608
358 Winchester/356 Winchester	9609
416 Remington Magnum	9609

DECAPPING PINS — 5-PACK	
Universal - Headed 22 thru 45 caliber	90164
Small - Straight 22 thru 25 caliber	9608
Large - Straight 6.5mm thru 45 caliber	9609

Important: Expander-Decapping Units, Decapping Units and all Decapping Pins are available through RCBS Distributors and Dealers. All other replacement parts should be ordered from RCBS Customer Service.

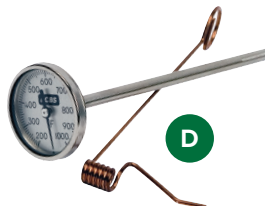
BULLET CASTING



A



C



D



E



B



F



G

Mould sold separately

A PRO-MELT™ 2

The improved RCBS® Pro-Melt™-2 lead furnace is a necessity for those who love to cast lead bullets. The 25-pound capacity can mould hundreds of projectiles. The programmable temperature control has a digital readout to ensure accuracy, and the bottom-pour design ensures accurate, safe casting. If the first step of handloading is manufacturing bullets, the Pro-Melt™-2 is a necessity.

81099 PRO-MELT™ 2 FURNACE 120 VAC US/CAN

81199 PRO-MELT™ 2 FURNACE 240 VAC INTERNATIONAL

B EASY-MELT™

The new RCBS® Easy-Melt™ lead ladle pot is a necessity for those who love to cast lead bullets with a traditional ladle. The pot's 25-pound capacity is enough to cast hundreds of projectiles. The programmable temperature control has a digital readout to ensure accuracy. A hinged cover warms moulds while keeping out debris. The Easy-Melt lead ladle pot is a traditional option for those who love to manufacture bullets.

81098 EASY-MELT™ LADLE POT 120 VAC US/CAN

81198 EASY-MELT™ LADLE POT 240 VAC INTERNATIONAL

C LEAD POT

This heavy-duty cast-iron pot holds up to 10 pounds of molten metal. It features a flat bottom for stability, bail handle, pouring spout, and a tab lifter for gripping with insulated tongs or pliers.

80010 LEAD POT

D LEAD THERMOMETER

With a 1000°F range and +/- 1% accuracy, our lead thermometer lets you pour lead at the optimum temperature. Large numbers are printed on a 1-1/2", glass-covered face. Six inch probe works with RCBS® Pro-Melt™, Pro-Melt 2™, Easy Melt™, or Lead Pot. An adjustable 6" handle helps to prevent burning your fingers.

81175 LEAD THERMOMETER

E INGOT MOULD

Mould up to four ingots at once and cool them quickly with this handy accessory. It's perfect for melting down scrap lead and preparing alloys for future use.

80005 INGOT MOULD

F LEAD DIPPER

A large-capacity bowl for easy scooping and stirring. The lead dipper has a tapered pouring spout to fit sprue holes and has a solid hardwood grip. Overall length: 11-1/2 inches.

80015 LEAD DIPPER

G BULLET MOULD HANDLES

Solid steel frames with extra-long, premium hardwood handles for comfort. Perfect for home bullet casting. One size fits all RCBS® bullet moulds only. Mould pictured, sold separately.

80025 BULLET MOULD HANDLES

WARNING

MELTING LEAD AND CASTING LEAD OBJECTS WILL EXPOSE YOU AND OTHERS IN THE AREA TO LEAD, WHICH IS KNOWN TO CAUSE BIRTH DEFECTS, OTHER REPRODUCTIVE HARM AND CANCER. SEE INSTRUCTIONS ON REDUCING EXPOSURE SUPPLIED WITH PRODUCT.

BULLET CASTING

H



J



I



K



L



H NECK EXPANDER DIES FOR CAST RIFLE BULLETS

To eliminate deforming the base and shaving lead off the sides of your lead rifle bullets during seating. RCBS® strongly recommends using our Neck Expander Die. In one step, the neck expander die expands the neck and slightly flares the case mouth of your bottle neck cases.

- 39800 NECK EXPANDER BODY**
- 39801 NECK EXPANDER PLUG ROD**
- NECK EXPANDER PLUG (SEE CHART)**

NECK EXPANDER DIES		
Bullet Diameter	Complete Die	Expander Plug Only
.224"	39803	39851
.228"	—	39853
.243"	39807	39855
.257"	39809	39857
.264"	39811	39859
.277"	—	39861
.284"	39815	39863
.308"	39817	39865
.309"	39819	39867
.310"	39821	39869
.311"	39823	39871
.321"	39825	39873
.323"	39827	39875
.338"	—	39877
.348"	39830	39878
.358"	39831	39879
.375"	39833	39881
.416"	39835	39883

I MOULD MALLET

Be kind to your bullet moulds. Stop using a metal object to tap out your cast lead bullets and potentially damaging your mould! RCBS® has reintroduced our wooden mould mallet to safely accomplish this goal.

80007 MOULD MALLET

J BULLET LUBRICANT

RCBS® Bullet Lubricant fits the Lube-A-Matic Sizer/Lubricator and most others that use a hollow stick lubricant. It's a non-toxic, temperature resistant blend, developed in cooperation with top-rated competition cast-bullet shooters. Our rifle bullet lubricant is a blend of Alox and beeswax, formulated to NRA specifications. Works fine for pistol bullets. Rifle Lube for outdoor use only.

- 80008 BULLET LUBRICANT**
- 80009 RIFLE BULLET LUBRICANT**

K LUBE-A-MATIC®—2 BULLET SIZER/LUBRICATOR

Size and lubricate cast bullets in one step with the Lube-A-Matic—2. Just insert a bullet in the sizer die and pull the handle. A sized and lubricated bullet ejects on the upstroke. A fingertip regulator lets you fine-tune lubricant flow. The Lube-A-Matic—2 also seats gas checks. A high quality tool that's a "must-have" item for the serious bullet caster.

(Die and top punch sold separately.) See chart on pages 57-60 for sizer die and top-punch sizes

- 80040 LUBE-A-MATIC—2**
- 86880 DUST COVER**

L LUBE-A-MATIC® (LAM) HEATER

Make bullet casting easier with the new Lube-A-Matic® (LAM) Heater. The LAM Heater helps keep bullet lube flowing, ensuring proper sizing and lubricating in less time. It mounts to RCBS® accessory base plates, and is compatible with RCBS® Lube-A-Matic® Sizers, as well as other leading lead bullet sizers. Fits RCBS, SAECO, Lyman and other lead bullet sizers.

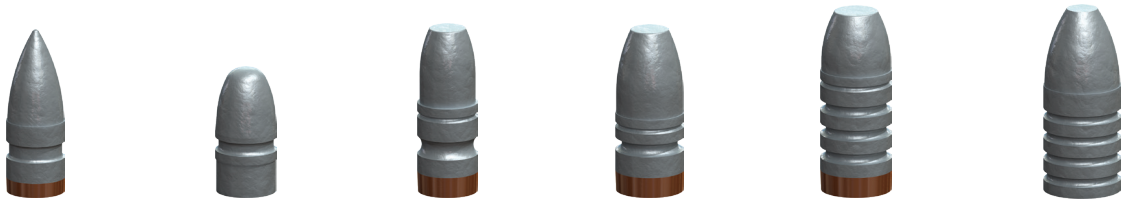
80006 LAM HEATER 120 VAC US/CAN ONLY

BULLET CASTING



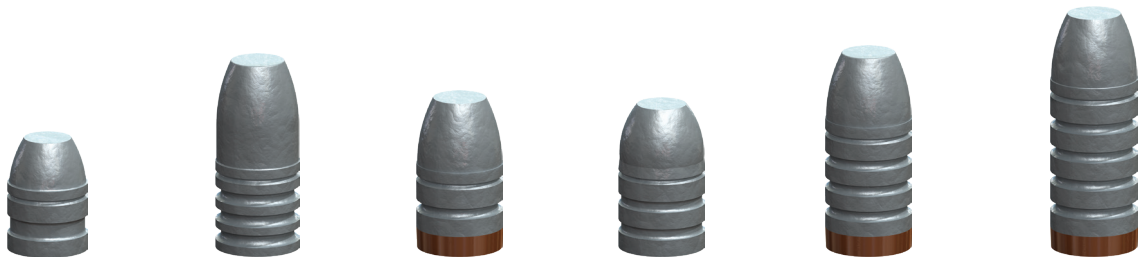
RIFLE BULLET MOULDS

Caliber	22	6mm	25	7mm	30	30
Mould	22-055-SP	243-095-SP	257-120-SP	7mm-168-SP	30-150-FN	30-180-FN
Part Number	82007	82015	82016	82018	82019	82014
Sizer Die	.225" dia.	.244" dia.	.258" dia.	.285" dia.	.309" dia.	.309" dia.
Part Number	82240	82202	82204	82209	82212	82212
Top Punch	#506	#509	#515	#531	#546	#546
Part Number	85506	85509	85515	85531	85546	85546



RIFLE BULLET MOULDS

Caliber	7.62mm	310 Cadet	32	35	375, 38-55	40
Mould	7.62-130-SPL	310-120-RN	32-170-FN	35-200-FN	37-250-FN	40-300-SP-CSA
Part Number	82022	82023	82024	82028	82029	82070
Sizer Die	.309" dia.	Bullet	.321" dia.	.358" dia.	.376" dia.	.410" dia.
Part Number	82212	NOT SIZED	82217	82223	82225	82226
Top Punch	#554	or	#550	#565	#570	#378
Part Number	85554	Lubed	85550	85565	85570	82520



RIFLE BULLET MOULDS

Caliber	44-40	11mm	45	45	45	45
Mould	44-200-FN	44-370-FN+	45-300-FN	45-325-FN-U	45-405-FN+	45-500-FN+
Part Number	82036	82093	82051	82045	82053	82054
Sizer Die	.428" dia.	.446" dia.	.458" dia.	.458" dia.	.458" dia.	.458" dia.
Part Number	82244	82253	82236	82236	82236	82236
Top Punch	#595	#585	#600	#383	#600	#600
Part Number	85595	85585	85600	85583	85600	85600

* also .475 Linebaugh + single cavity mould

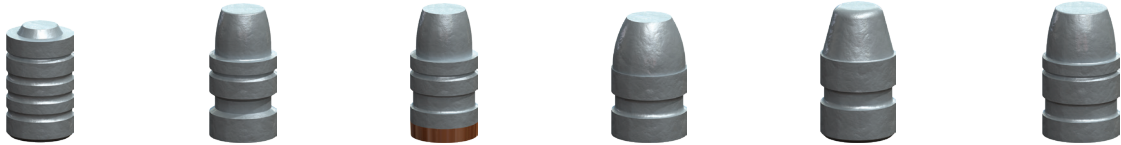
BULLET CASTING

PISTOL BULLET MOULDS



Caliber	32	32	32	9mm	9mm	9mm
Mould Part Number	32-077-RN 82021	32-098-WC 82060	32-098-SWC 82061	9mm-124-RN 82062	9mm-124-CN 82027	9mm-147-FN 82077
Sizer Die Part Number	.311" dia. 82214	.314" dia. 82216	.314" dia. 82216	.356" dia. 82221	.356" dia. 82221	.356" dia. 82221
Top Punch Part Number	#465 82536	#445 82543	#444 82542	#401 82521	#402 82522	#556 85556

PISTOL BULLET MOULDS



Caliber	38/357	38/357	38/357	40/10mm	10mm	41
Mould Part Number	38-148-WC 82031	38-150-SWC 82032	38-158-SWC 82065	40-180-FN 82066	10mm-200-SWC 82068	41-210-SWC 82039
Sizer Die Part Number	.358" dia. 82223	.358" dia. 82223	.358" dia. 82223	.401" dia. 82245	.400" dia. 82243	.410" dia. 82226
Top Punch Part Number	#429 82529	#429 82529	#429 82529	#558 85558	#518 85518	#420 82541

PISTOL BULLET MOULDS



Caliber	44	44	44	45 Auto	45 Auto	45 Colt	45 Colt
Mould Part Number	44-240-SWC 82042	44-250-K 82080	44-300-SWC 82079	45-201-SWC 82047	45-230-RN 82048	45-255-SWC 82050	45-270-SAA 82092
Sizer Die Part Number	.430" dia. 82229	.430" dia. 82229	.430" dia. 82229	.452" dia. 82233	.452" dia. 82233	.454" dia. 82234	.454" dia. 82234
Top Punch Part Number	#421 82527	#421 82527	#421 82527	#680 82545	#374 82519	#424 82528	#424 82528

* also .475 Linebaugh + single cavity mould

WARNING: MELTING LEAD AND CASTING LEAD OBJECTS WILL EXPOSE YOU AND OTHERS IN THE AREA TO LEAD, WHICH IS KNOWN TO CAUSE BIRTH DEFECTS, OTHER REPRODUCTIVE HARM AND CANCER. SEE INSTRUCTIONS ON REDUCING EXPOSURE SUPPLIED WITH PRODUCT.

BULLET CASTING

ALTERNATE BULLET SIZES FOR CAST BULLETS

Caliber	Size	Sizer Die	Part Number
.22	.224"	.224" dia.	82200
6mm	.243"	.243" dia.	82201
.25	.257"	.257" dia.	82203
270	.277"	.277" dia.	82205
7mm	.284"	.284" dia.	82208
.30	.308"	.308" dia.	82211
.30	.310"	.310" dia.	82213
.30	.311"	.311" dia.	82214
.32	.312"	.312" dia.	82242
.32	.313"	.313" dia.	82215
.32	.314"	.314" dia.	82216
38/357	.354"	.354" dia.	82219
38/357	.355"	.355" dia.	82220
.38	.356"	.356" dia.	82221
357	.357"	.357" dia.	82222
375/38-55	.375"	.375" dia.	82224
.40	.408"	.408" dia.	82249
44-40	.427"	.427" dia.	82227
.44	.429"	.429" dia.	82228
.44	.431"	.431" dia.	82230
.45	.450"	.450" dia.	82231
.45	.451"	.451" dia.	82232
45 Colt	.452"	.452" dia.	82233
.45	.457"	.457" dia.	82235
500 S&W/50 AE	.501"	.501" dia.	82250

ABBREVIATION GUIDE:

CSA	• C Sharps Arms	SWC	• Semi-Wadcutter
TG	• Target	WC	• Wadcutter
SPL	• Special	SP	• Semi-Point
U	• Universal	BB	• Bevel Base
PT	• Pointed	M	• Minie Ball
CAV	• Cavalry	R	• Round Ball
CN	• Conical Nose	SIL	• Silhouette
SAA	• Single Action Army	K	• Keith Type
FN	• Flat Nose	BPS	• Black Powder Silhouette
RN	• Round Nose	CM	• Cowboy Mould

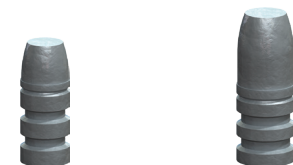
SILHOUETTE BULLET MOULDS



Caliber	308	357
Mould	308-165-SIL	357-180-SIL
Part Number	82152	82154
Sizer Die	.309" dia.	.358" dia.
Part Number	82212	82223
Top Punch	#541	#430
Part Number	85541	82530
Seater Plug	308 SIL	357 SIL
Part Number	09697	90019*

Older die sets utilizing a 1/4" - 28 threaded seater plug require #09698 for .357 SIL and #09699 for .44 SIL.

COWBOY BULLET MOULDS



Caliber	25-20 Win.	30-30 Win
Mould	25-85-CM	30-150-CM
Part Number	82301	82302
Sizer Die	.258"	.309"
Part Number	82204	82212
Top Punch	#630	#631
Part Number	85630	85631

MINIE BALL MOULDS



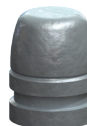
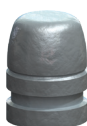
Diameter	Mould	Part Number
.575"	.58-500-M+	82103
.580"	580-416 HODGDON	82162

All RCBS® Bullet Moulds are machined to exacting specifications ensuring accurate and clean casts time after time.

NOTE: All moulds are shown slightly smaller than actual size. Unless noted otherwise, all RCBS bullet moulds are double cavity type. Each mould is identified by a five or six digit number, followed by two or three letters. The first two or three digits identify bullet caliber, the last three are bullet weight in grains. (Round Balls are identified by caliber only.) Bullet weights are established by the following methods:

- Rifle & Silhouette Bullets—Linotype alloy
- Pistol, Black Powder Silhouette and C Sharps Arms Bullets—An alloy of one part tin to ten parts lead
- Cowboy Bullets—An alloy of one part tin to twenty parts lead
- Round & Minie Balls—Pure lead. +Available in single cavity only

COWBOY BULLET MOULDS



Caliber	38-40 WCF	44-40 WCF/44 Russ 44 Special/44 Magnum	45 S&W Sch/45 Long Colt	56-50 Spencer
Mould	40-180-CM	44-200-CM	45-230-CM	50-350-CM+
Part Number	82306	82307	82308	82309
Sizer Die	.401"	.428"/.430"	.452"/.454"	.512"
Part Number	82245	82244/82229	82233/82234	82255
Top Punch	#635	#636	#637	#624
Part Number	85635	85636	85637	85624

+ Single cavity mould

NEW

A AMMO BOXES

These tough, plastic boxes have flush exteriors with recessed latches. They're designed to stack easily, and feature an anti-rattle bullet-tip nest, empty case support, and long-lasting hinge. Available in seven sizes:

- 86910 .223
- 86911 .243
- 86912 .270
- 86914 380
- 86915 35/357
- 86916 44 MAG
- 86917 40/45

MISCELLANEOUS

A



THREE DISPENSERS, ONE AIM: PERFECTION



CHARGE MASTER
LINK™

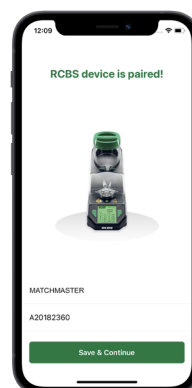
MATCHMASTER™

CHARGE MASTER
SUPREME™



THE WORLD'S MOST ADVANCED POWDER DISPENSERS

RCBS's family of Precisioneered Reloading™ dispensers combine industry-leading accuracy with the technology in your smartphone and our cutting-edge app. Choose from the compact, portable ChargeMaster Link, the ChargeMaster Supreme, or the Matchmaster, the gold standard in speed and match-winning precision with .04 grain accuracy available.



Download the
App Today

LEARN MORE



RCBS.COM



AN IDEA THAT BECAME AN INDUSTRY



RCBS®

RCBS was founded in 1943 by dedicated shooter Fred T. Huntington. Frustrated with the lack of quality varmint bullets available, he began to craft his own dies to swage .22 rimfire cartridge cases to form bullet jackets. He slowly perfected the design until it evolved into a product he could stand behind: the Rock Chuck Bullet Swage die, or RCBS.

By 1958, Fred's idea was a full-time business, with operations that had grown into a 50,000-square-foot factory and expanded to include a broader product line.

More than 80 years later, the RCBS name still stands for unmatched quality and accuracy, with an expansive product line that spans from industry-leading dies and reloading presses to the world's most advanced powder dispensers.

RCBS.COM

RCBS®

PRECISIONEERED RELOADING™ SINCE 1943

GOT A QUESTION?

Contact our world-class customer service team

Phone: 800-533-5000, Monday through Friday

Online: [RCBS.com](https://www.rcbs.com)

RCBS APP: To get the best Reloading Data download the RCBS APP from the App Store.



605 ORO DAM BOULEVARD EAST, OROVILLE, CA 95965 USA

©RCBS 2025