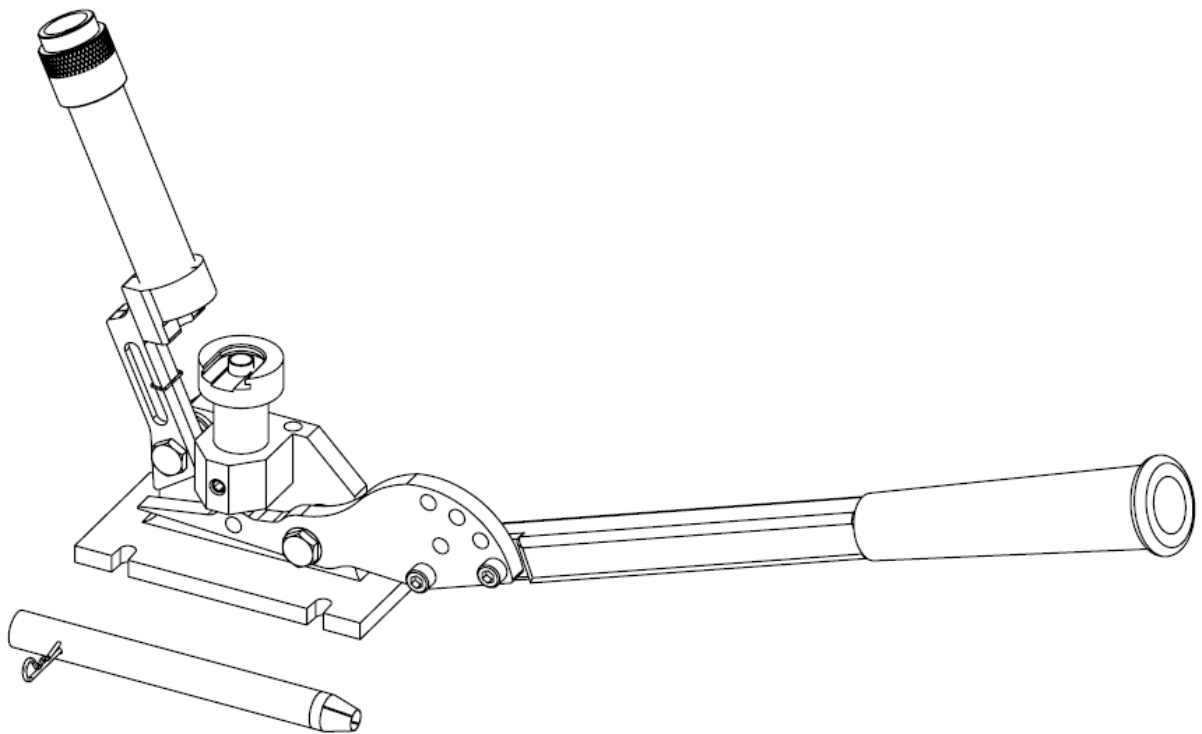


RCBS®

.50 BMG PRIMING TOOL



PRODUCT INSTRUCTIONS

⚠ WARNING

Before using the RCBS .50 BMG Priming Tool, read these instructions carefully to fully learn how to safely operate the related reloading equipment. Failure to properly operate the related reloading equipment can result in severe personal injury and/or equipment damage.

If you have any questions while assembling or operating this tool,

Call us at 1-800-533-5000 or 1-530-533-5191

Monday – Thursday 6:30 am – 3:00 pm Pacific Time

(hours may vary)

Or email us at rcbs.tech@atk.com

This instruction manual contains specific safety and operating information. It should be considered a permanent part of your reloading equipment and remain with the equipment at all times for easy reference.

LIMITED LIFETIME WARRANTY

Your .50 BMG Priming Tool is warranted to be free from defects in material or workmanship for as long as the original owner owns it. This warranty is extended only to the original consumer purchaser. All RCBS products are intended for non-commercial use by hobbyists. Any other use of these products will void the warranty. Should you believe that your .50 BMG Priming Tool is defective in material or workmanship, you must return it to Ammunition Accessories Inc. through its Oroville operation (hereinafter "Oroville Operations") postage paid for evaluation. If defective, the product will be repaired or replaced at Oroville Operations' option, at no charge.

Send a dated proof of purchase to Oroville Operations for return shipping and handling, along with the .50 BMG Priming Tool to:

Ammunition Accessories Inc.,
Oroville Operations
605 Oro Dam Blvd East
Oroville, California 95965

Warranty services cannot be provided without meeting the above requirements.

THIS LIMITED LIFETIME WARRANTY DOES NOT COVER DEFECTS OR DAMAGE RESULTING FROM: CARELESSNESS, MISUSE, COMMERCIAL USE, ABUSE, IMPROPER INSTALLATION, MODIFICATION, OR NORMAL WEAR AND TEAR. THE IMPLIED WARRANTIES OF MERCHANTABILITY AND FITNESS FOR A PARTICULAR PURPOSE ARE LIMITED TO THE DURATION OF THIS LIMITED LIFETIME WARRANTY. OROVILLE OPERATIONS IS NOT LIABLE FOR DAMAGES IN EXCESS OF THE PURCHASE PRICE OF THE PRODUCT AND UNDER NO CIRCUMSTANCES SHALL OROVILLE OPERATIONS BE LIABLE FOR CONSEQUENTIAL OR INCIDENTAL DAMAGES. HOWEVER, SOME STATES DO NOT ALLOW LIMITATIONS ON INCIDENTAL, OR CONSEQUENTIAL DAMAGES, SO THE ABOVE LIMITATION OR EXCLUSION MAY NOT APPLY TO YOU.

The above warranty provides the sole and exclusive warranty available to the customer in the event of a defect in material or workmanship in the reloading press. This warranty gives you specific legal rights, and you may also have other rights which vary from State to State.

SAFETY

Reloading is an enjoyable and rewarding hobby that can be conducted safely. But, as with any hobby, carelessness or negligence can make reloading hazardous. This product has been designed from the beginning with the user's safety in mind. When reloading, safety rules must be followed. By observing these rules, the chance of a hazardous occurrence causing personal injury or property damage is minimized.

GENERAL

- Use all equipment as the manufacturer recommends. Study the instructions carefully and become thoroughly familiar with the operation of the product. If you do not have written instructions, request a copy from the equipment manufacturer.
- Do not take short cuts. Attempting to bypass established procedures is an invitation to an accident.
- Observe "good housekeeping" in the reloading area. Keep tools and components neat, clean and orderly. Promptly and completely clean up primer and powder spills.
- Reload only when you can give your undivided attention. Do not reload when fatigued or ill, or under the influence of medications or alcohol.
- Develop a reloading routine to avoid mistakes which may prove hazardous. Do not rush - load at a leisurely pace.
- Always wear adequate eye protection to protect your eyes from flying particles. You assume unnecessary risk when reloading without wearing safety glasses.

LOADING DATA

- Use only laboratory tested reloading data. We highly recommend the current SPEER Reloading Manual.
- OBSERVE ALL WARNINGS ABOUT THE USE OF MAXIMUM LISTED LOADS

⚠ WARNING/CAUTION

PRIMERS AND POWDER

- Store primers and powder beyond the reach of children and away from heat, dampness, open flames and electrical equipment. Avoid areas where static electricity is evident.
- DO NOT use primers of unknown identity.
- Dispose of unknown primers in accordance with applicable regulations.
- Keep primers in the original factory container until ready to use. Return unused primers to the same factory packaging for safety and to preserve their identity. Primer packaging is designed to provide safe storage.
- DO NOT store primers in bulk. The blast of just a few hundred primers is sufficient to cause serious injury to anyone nearby.
- DO NOT force primers. Use care in handling primers.
- DO NOT have more than one can of powder on the bench at one time. Powder cans should be stored away from the bench to avoid picking up the wrong one.
- DO NOT use any powder unless its identity is positively known. The only positive identification is the

manufacturer's label on the original canister. Discard all mixed powders and those of uncertain identity.

- If you use a powder measure, replace the lids on both the powder hopper and powder can after the powder hopper has been filled.
- When using a powder measure, settle the powder in the powder hopper before charging any cases. Throw and check the weight of at least ten charges. This will assure you that the correct powder charge is being thrown.
- When you finish a reloading session, pour any remaining powder back into its original factory container. This will preserve the identity and shelf life of the powder.
- DO NOT smoke while reloading.

RECORD KEEPING

- Keep complete records of reloads. Apply a descriptive label to each box showing the date produced, and the primer, powder and bullet used. Labels for this purpose are packed with SPEER bullets.
- Never attempt to guess at the identity of your ammunition.

Because RCBS has no control over the choice of components, the manner in which they are assembled, the use of this product, or the firearms in which the resulting ammunition may be used, we assume no responsibility, expressed or implied, for the use of ammunition reloaded with this product.

UNPACKING

Refer to the list below to Identify parts as you unpack your new .50 BMG Priming Tool.

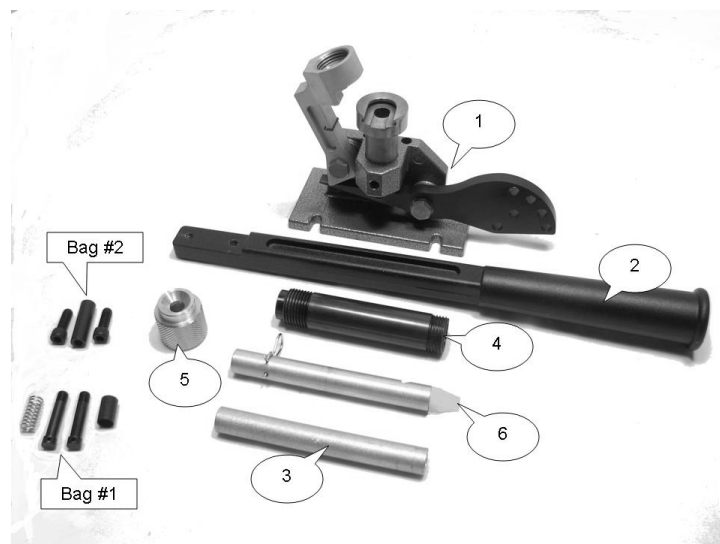
1. Main Body Assembly
2. Handle
3. Primer Tube
4. Primer Shield
5. Primer Shield Cap
6. Pick Up Tube Assembly

.50 BMG Priming Tool Parts Bag #1

- Primer Plug .50 Cal Flat Base
- Primer Plug .50 Cal Oval Base
- Primer Cup .50 Cal
- Primer Plug Coil Spring

.50 BMG Priming Tool Parts Bag #2

- Primer Plug Shaft
1/4"-20 x 3/4" SHCS (2)



INSTALLATION

Bolt the .50 BMG Priming Tool to the reloading bench or table using the slots provided in the Main Body Casting. Mount the Tool toward the front edge of the bench so that the handle will operate through its full stroke.

Insert the Primer Feed Tube into the Primer Feed Arm. Place the Primer Shield over the Primer Feed Tube and thread snugly into the casting. Thread the Primer Shield Cap onto the Shield and tighten. Insure that the Primer Feed Tube has been seated to the bottom of the casting.



Inserting Feed Tube



Install Primer Shield



Install Primer Shield Cap

The Handle has four mounting positions. Choose the position that works best for you. Then using the proper Primer Rod Assembly (for flat or cupped primers), insert the rod into the Shell Holder and Main Ram until it contacts the handle lever.



Insert the primer rod assembly.

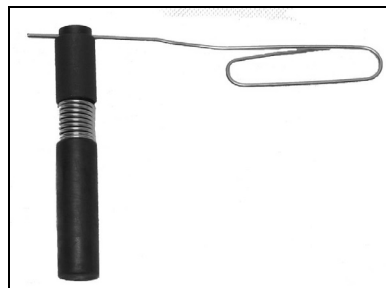
PRIMER PLUG ASSEMBLY

NOTE: The Primer Plug Assembly has been designed to allow for replacement of the individual components.

Select the Primer Plug (flat or cupped) and Cup. Drop the Primer Plug through the Cup. Place the Spring on the exposed shaft of the Primer Plug. Screw the Primer Plug into the top of the Primer Plug Shaft.



Tighten the assembly with a small nail or straightened paper clip through the hole in the Primer Plug. Do not over-tighten.



The primer plug, cup and spring thread into the primer plug shaft. Tighten the primer rod assembly with a straightened paper clip.

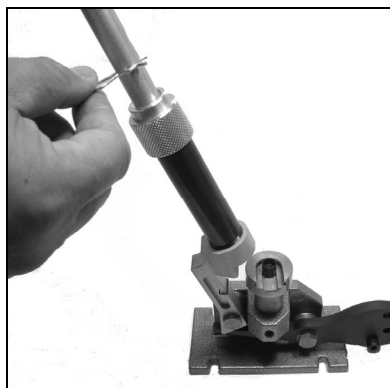
⚠CAUTION: Care must be taken when loading the .50 BMG Primer Pick Up and Feed Tube. DO NOT force primers. Because of the stacked condition of the primers, if one should ignite, all the primers in the tube can explode causing serious personal injury. No more than five pounds pressure should be applied when picking up primers with the .50 BMG Primer Pick Up Tube (this can be checked using a bathroom scale). If difficulties occur in primer pick-up, investigate the cause and clear the condition or return the Primer Pick Up Tube to RCBS for correction.

FILL PRIMER TUBE

Remove primers from box and place on loading bench or RCBS Primer Tray (sold separately) cup side up, anvil down. Holding the Primer Pick Up Tube, Collet Pin up, press the pick up end of tube down onto primers one at a time. When the Primer Pick Up Tube is full, twenty(20) primers, place the Collet Pin end onto the Primer Shield Cap, remove Pin to allow primers to transfer into the Primer Feed Tube. Replace the Collet Pin into the Pick Up Tube. The .50 BMG Priming Tool is now ready to use.

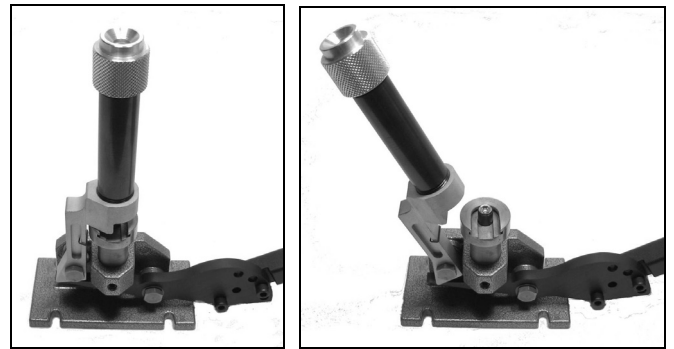


Picking up primers



Fill a primer tube.

TO PRIME A CASE: Push handle to the bottom of the stroke. The Primer Feed Arm will automatically drop a primer into the Primer Rod Assembly. Next, raise the handle to the top of the stroke and insert a case into the Shell Holder. Then lower the handle gently and seat the primer to the bottom of the primer pocket. Raise the handle and remove the primed case.



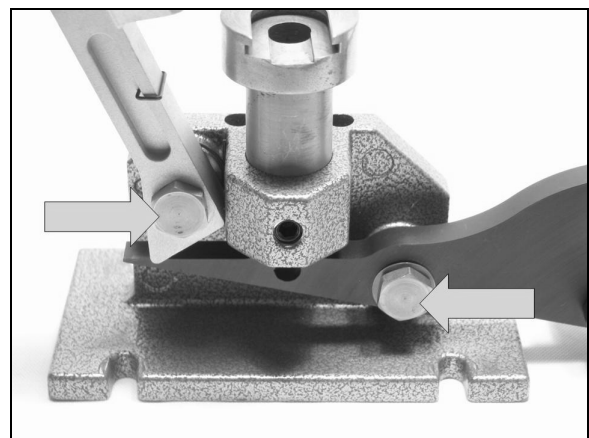
Pushing the handle down will move the primer feed arm into position.



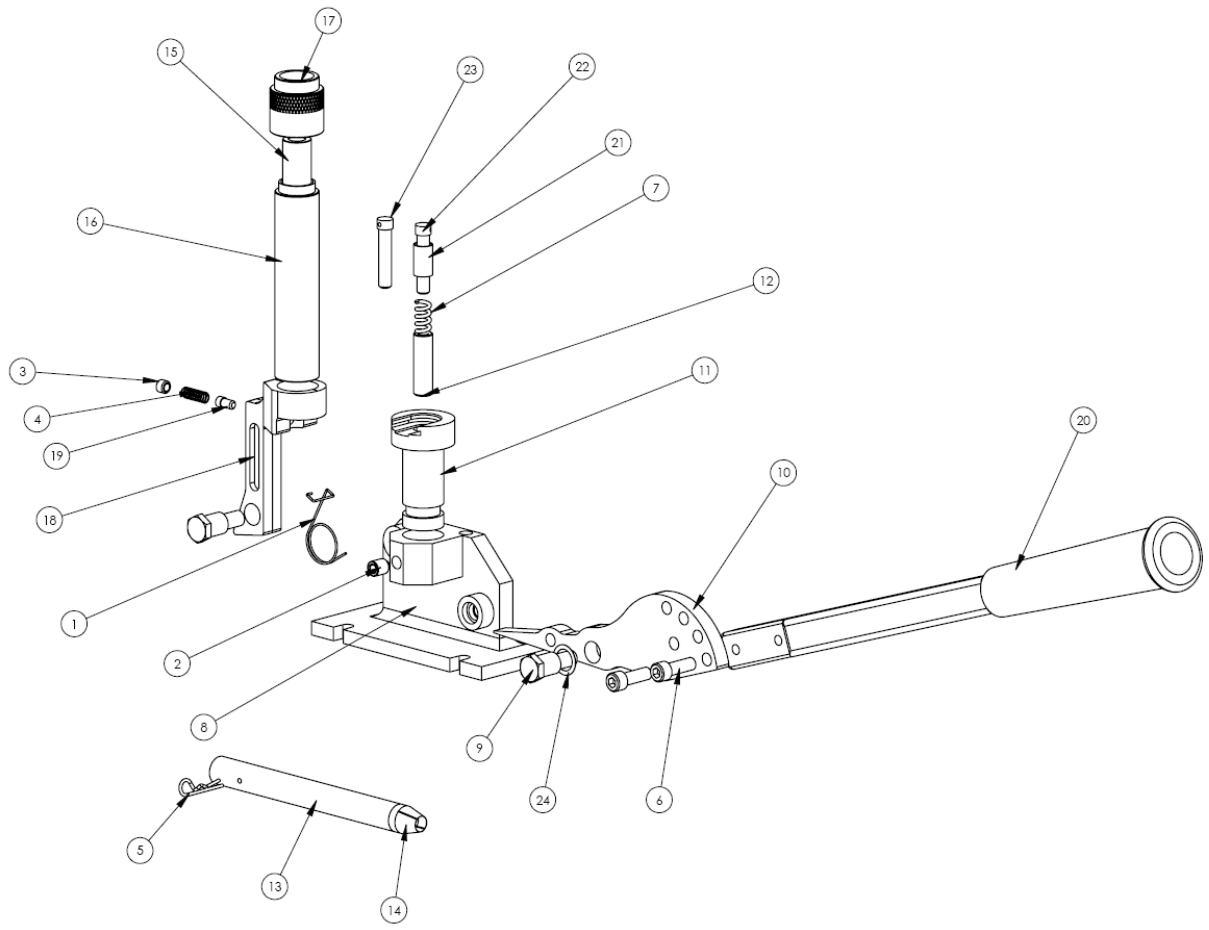
Repeat the above procedures for each primer to be seated. With a little practice you will develop a rhythm that will speed up your case priming operation.

MAINTENANCE

Place a drop of light lubricating oil on the pivot Shoulder Bolt and the Pivot to Feed Arm. See photo below.



Periodically clean the Primer Pick Up Tube and Primer Feed Tube to ensure proper operation of this tool and to reduce the risk of mishaps due to primer residue build up.



BOM TABLE			
ITEM NO.	PART NAME	PART NUMBER	QTY.
1	RETURN SPRING	109465	1
2	5/16-18 x 3/8 S.S.	109467	1
3	1/4-28 x 3/16 C. POINT S.S.	109591	1
4	RETURN SPRING	109596	1
5	COTTER PIN	109600	1
6	1/4-20 x 3/4 SHCS	186235	2
7	PRIMER PLUG COIL SPRING	188749	1
8	BODY	709462	1
9	7/16 SHOULDER BOLT	709464	2
10	PIVOT	709564	1
11	SHELL HOLDER	709565	1
12	PRIMER PLUG SHAFT	709566	1
13	PRIMER PICK UP TUBE	709567	1
14	.50 BMG PRIMER TIP	709568	1
15	PRIMER TUBE	709569	1
16	PRIMER SHIELD	709570	1
17	PRIMER SHIELD CAP	709571	1
18	FEED ARM	709572	1
19	STOP PIN	709595	1
20	HANDLE	784113	1
21	PRIMER CUP .50 CAL	788744	1
22	PRIMER PLUG .50 CAL FLAT BASE	788745	1
23	PRIMER PLUG .50 CAL OVAL BASE	788760	1
24	BOW WASHER 121-S-8	109114	1



PRECISIONEERED RELOADING EQUIPMENT

We think that we make the very best reloading equipment in the world. If you agree, please tell your friends. If you disagree, tell us we want to do something about it!

Customer Service

1-800-533-5000 (US or Canada) or 530-533-5191

Hours: Monday - Thursday, 6:30am - 3:00pm Pacific Time
(hours may vary)

e-mail: rcbs.tech@atk.com or visit our website at www.rcbs.com

RCBS 605 Oro Dam Blvd. East Oroville, CA 95965

ALLIANT POWDER - CCI - CHAMPION TRAPS & TARGETS
ESTATE CARTRIDGE - FEDERAL AMMUNITION - FUSION AMMUNITION
GUNSLICK - INTENSITY - NITREX - ORBEX - OUTERS - RCBS - RAMLINE
SHOOTERS RIDGE - SPEER - WEAVER

7200554/309