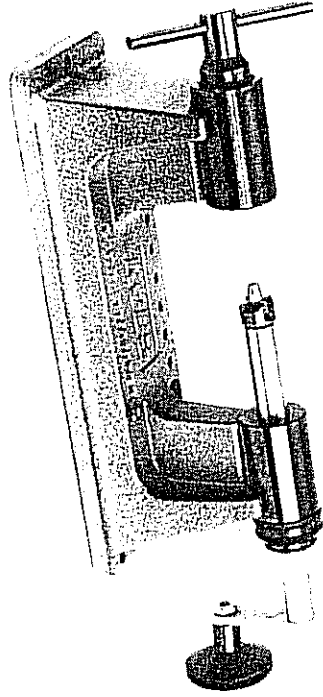


Instructions for Use



ROTARY CASE TRIMMER-2

RCBS®

SAFETY

Reloading is an enjoyable and rewarding hobby that is easily conducted with safety. But carelessness or negligence can make reloading hazardous. This product has been designed from the beginning with the user's safety in mind.

As with any reloading operation, some safety rules must be followed. By observing these few rules, the chance of a hazardous occurrence causing damage or injury becomes extremely remote.

GENERAL

- Use the reloading equipment as the manufacturer recommends. Study the instructions carefully and become thoroughly familiar with the operation of the product. Don't take short cuts.
- Observe "good housekeeping" in the reloading area. Keep tools and components neat, clean and orderly. Promptly and completely clean up primer and powder spills.
- Reload only when you can give your undivided attention. Do not reload when fatigued or ill. Develop a reloading routine to avoid mistakes. Avoid haste – load at a leisurely pace.
- Always wear adequate eye protection. You assume unnecessary risk when reloading without wearing safety glasses.

LOADING DATA

- Use only laboratory tested reloading data. We highly recommend the use of the SPEER Reloading Manual.
- **OBSERVE ALL WARNINGS ABOUT THE USE OF MAXIMUM LISTED LOADS.**

RECORD KEEPING

- Keep complete records of reloads. Apply a descriptive label to each box showing the date produced, and the primer, powder and bullet used. Labels for this purpose are packed with SPEER bullets.

Since RCBS has no control over the choice of components, the manner in which they are assembled, the use of this product, or the guns in which the resulting ammunition may be used, no responsibility, either expressed or implied, is assumed for the use of ammunition reloaded with this product.

GENERAL INFORMATION

The Rotary Case Trimmer-2 works just like a lathe. A brass case is locked securely into place in the collet, and the cutter is adjusted to trim the case to the desired length. A few turns of the handle and the case is trimmed quickly, easily, and accurately.

Except for the handle, the Case Trimmer is constructed of 100% metal – no wood or plastic. The cutter blade is machined from hardened steel for extended service life and can be removed for sharpening. The Cutter Assembly has double lock rings, or bushings, to permit a quantity of cases to be trimmed with a single adjustment. Interchangeable, quick-release collets are available for all popular calibers – .17 to .45. Collets are machined with multiple steps to hold cases of different head diameters. (Figure 1.) This eliminates the need of buying a collet for each diameter of case head.

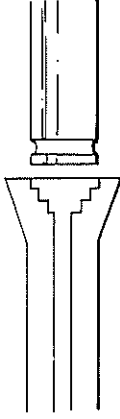


Figure 1

Case Trimmer Pilots are interchangeable and available in twenty sizes, to fit from .17 to .45 caliber cases. Each size of pilot is machined to the caliber of the resized case mouth. This snug fit eliminates wobbling and insures perfect alignment of the case during trimming. The pilot is secured to the cutter blade with a setscrew. (Figure 2.)

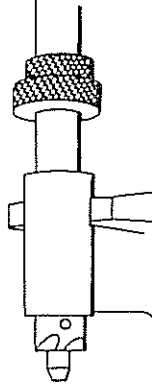


Figure 2

We think that we make the very best reloading equipment in the world. If you agree, please tell your friends. If you disagree, tell us – we want to do something about it! For Customer Service call toll free: 1-800-533-5000
Hours: Monday - Thursday 7:00 A.M. - 4:30 P.M.

Your Shooting Partner
CCI,® Speer,® RCBS,® Outers® & Weaver®

RCBS®

SPORTING EQUIPMENT DIVISION OF BLOUNT, INC.
RCBS Operations, 605 Oro Dam Blvd., Oroville, CA 95965

MEASURING CASE LENGTH

Whenever a brass case has stretched in resizing, or has been formed into a different caliber, it must be trimmed to the correct length. To properly measure a case you should use an RCBS Case Length Gauge or a new factory case as a guide. After trimming, use one of these methods to recheck the case length.

TO MOUNT CASE TRIMMER

Mount the Case Trimmer on a bench or table, using three screws of sufficient length to hold it securely in place. Do not use a "C" clamp on the trimmer base. If portability is desired, mount the trimmer on a board slightly larger than the base. Then attach the board to the bench or table.

TO ADJUST FOR TRIMMING

Grasp the handle and slide the cutter assembly to the right until it stops. (Figure 3.)

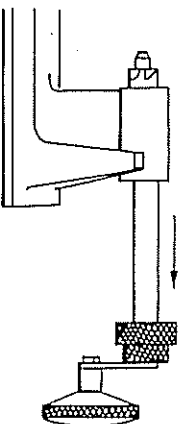


Figure 3

With your left hand insert the base of a case into the collet as far as it will go and hold it there. (Figure 4.)

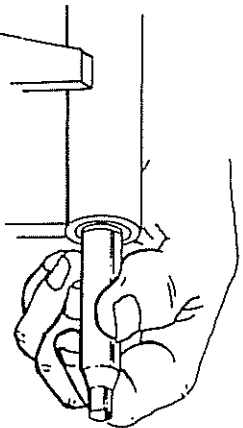


Figure 4

With your right hand slide the cutter assembly to the left, until the pilot enters the case mouth up to the cutter blade. (Figure 5.) This will hold the case centered.

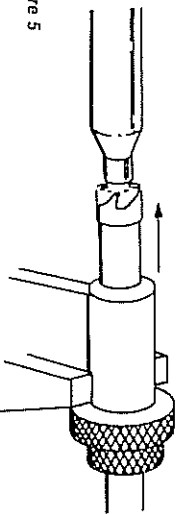


Figure 5

Firmly twist the collet holder pin to tighten the collet around the case head. (Figure 6.) This will prevent the case from turning during trimming.

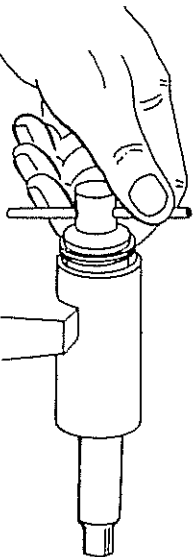


Figure 6

Holding the Adjustment Bushing (A) firmly in place, unscrew the Fine Adjustment Bushing (B) four or five full turns clockwise. (Figure 7.) Now slide both bushings left against the Cutter Guide (C) and tighten the setscrew in Bushing (A) only. Twist Bushing (B) counterclockwise 1/2 turn and you're ready to trim the first case. When turning the handle, press lightly inward against the case mouth.

Remove the trimmed case and check the overall length with a case length gauge or new factory case. If the trimming length must be changed, reset the Fine Adjustment Bushing. One complete turn equals .031 of cutter blade movement.

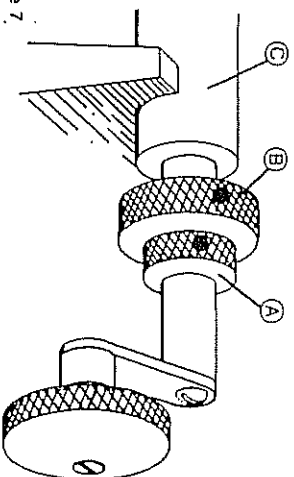


Figure 7

When the correct trim length is reached, tighten the setscrew in Bushing (B) and you're ready to trim a quantity of cases. Occasionally check the overall length of a trimmed case to be sure the adjustment hasn't changed.

CAUTION: Do not trim a case shorter than the specified trim length. Consult the latest Speer Reloading Manual for minimum and maximum case lengths.

HELPFUL HINTS

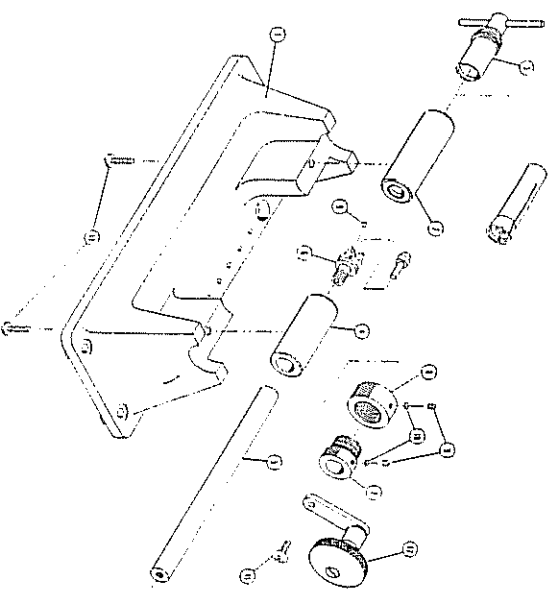
All cases must be full-length sized and expanded before trimming. Trimmed case mouths should be beveled inside and out with a Deburring Tool.

When not using the trimmer, the tension on the collet should be released to regain its spring tension.

If you trim cases of several different calibers, keep one case of each caliber to use as a guide when adjusting the Case Trimmer. Occasionally lubricate the cutter shaft with a light machine oil.

If the cutter becomes dull you can return it to the Customer Service Department at RCBS, 605 Oro Dam Blvd., Oroville, CA 95965. The cutter will be sharpened and returned to you at no charge.

ROTARY CASE TRIMMER-2 PARTS LIST



KEY PART NO.	DESCRIPTION
1	98935 Base
2	98936 Collet Holder Sleeve
3	98947 Collet Holder Assembly
4	98938 Cutter Guide
5	09405 Cutter Shaft
6	09406 Cutter
7	09407 Adjustment Bushing
8	09408 Fine Adjustment Bushing
9	09409 Setscrew 1/2 x 1/8 (3)
10	09410 Brass Buffer (2)
11	09019 Binder Head Screw 1/2 x 1/4
12	98948 Palm Handle Assembly
13	86824 SHCS 1/2 x 1/8 (2)
---	87051 Lock Washer #10 (2)