

# ***RCBS***®

---

# **LUBE DIE**



PRODUCT INSTRUCTIONS

# SAFETY

Reloading is an enjoyable and rewarding hobby that is easily conducted with safety. But carelessness or negligence can make reloading hazardous. This product has been designed from the beginning with the user's safety in mind.

As with any reloading operation, some safety rules must be followed. By observing these few rules, the chance of hazardous occurrence causing damage or injury becomes extremely remote.

## GENERAL

- Use the reloading equipment as the manufacturer recommends. Study the instructions carefully and become thoroughly familiar with the operation of the product. Don't take short cuts.
- Observe "good housekeeping" in the reloading area. Keep tools and components neat, clean and orderly. Promptly and completely clean up primer and powder spills.
- Reload only when you can give your undivided attention. Do not reload when fatigued or ill. Develop a reloading routine to avoid mistakes. Avoid haste—load at a leisurely pace.
- Always wear adequate eye protection. You assume unnecessary risk when reloading without wearing safety glasses.

## LOADING DATA

- Use only laboratory tested reloading data. We highly recommend the use of the SPEER Reloading Manual.
- OBSERVE ALL WARNINGS ABOUT THE USE OF MAXIMUM LISTED LOADS.

## PRIMERS AND POWDER

- **WARNING:** Primers are designed to explode and will do so when subjected to heat or percussion.
- **DO NOT** decap live primers.

- Never attempt to seat or reseal a primer in a loaded round.
- Store primers and powder beyond the reach of children and away from heat, dampness, open flames and electrical equipment.
- DO NOT use primers of unknown identity. Dispose of unknown primers in accordance with applicable regulations.
- Keep primers in original factory container until ready to use. Return unused primers to the same factory packaging for safety and to preserve their identity.
- DO NOT store primers in bulk. The blast of just a few hundred primers is sufficient to cause serious injury to anyone nearby.
- DO NOT force primers. Use care in handling primers.
- DO NOT use any powder unless its identity is positively known. Discard all mixed powders and those of uncertain or unknown identity.
- If you use a powder measure, replace the lids on both the powder hopper and powder can after the powder hopper has been filled.
- Before charging cases, settle the powder in the powder hopper. Throw and check the weight of at least ten charges. This will assure you that the correct powder charge is being thrown.
- After a reloading session ends, pour the remaining powder back in its original factory container. This will preserve the identity and shelf life of the powder.
- DO NOT smoke while handling powder or primers.

## **RECORD KEEPING**

- Keep complete records of reloads. Apply a descriptive label to each box showing the date produced, and the primer, powder and bullet used. Labels for this purpose are packed with SPEER bullets.

Since RCBS has no control over the choice of components, the manner in which they are assembled, the use of this product, or the guns in which the resulting ammunition may be used, no responsibility, either expressed or implied, is assumed for the use of ammunition reloaded with this product.

# LUBE DIE COMPATIBILITY CHART

Use the chart below to determine which Lube Die to use for a specified caliber. If a number is not indicated, then a Lube Die is not available for that caliber.

Caliber	Lube Die	Caliber	Lube Die
17 Remington	1	6.5 x 68Smm	4
218 Bee	—	270 Weatherby Magnum	4
22 Hornet	—	270 Winchester	2
22K-Hornet	—	280 Remington (7mm Exp. Rem.)	2
22 Remington Jet	—	284 Winchester	4
22 Savage High-Power	3	7mm Bench Rest Remington	2
22-250 Remington (22 Varminter)	2	7mm Remington Magnum	4
220 Swift	3	7mm Remington Ultra Magnum	—
221 Remington Fire Ball	1	7mm Shooting Times Westerner	4
222 Remington	1	7mm Thompson/Center Ugalde	1
222 Remington Magnum	1	7mm Weatherby Magnum	4
223 Remington (5.56mm)	1	7mm-08 Remington	2
5.6 x 50mm Rimmed	—	7 x 57mm Mauser (7mm Mauser)	2
240 Weatherby Magnum	2	7 x 64mm Brenneke	2
243 Winchester	2	7 x 65mm Rimmed	2
6mm PPC	1	7-30 Waters	3
6mm Remington (244 Remington)	2	30 M-1 Cabine	—
25 Auto (25 ACP)	—	30 Luger (7.65mm Luger)	—
25-06	2	30 Mauser (7.63mm Mauser)	—
25-20 Winchester	—	30 Remington	3
25-35 Winchester	3	30-06 Springfield	2
250 Savage (250-3000 Savage)	2	30-30 Winchester	3
257 Roberts	2	30-338 Winchester Magnum	4
257 Roberts Improved 40°	2	30-378 Weatherby Magnum	—
257 Weatherby Magnum	4	30-40 Krag	—
260 Remington	2	300 H&H Magnum	4
264 Winchester Magnum	4	300 Remington Ultra Magnum	—
6.5mm-06	2	300 Savage	2
6.5 x 52mm Carcano	3	300 Weatherby Magnum	4
6.5 x 54mm Mannlicher-Schoenmauer	—	300 Winchester Magnum	4
6.5 x 55mm Swedish Mauser	2	303 British	—
6.5 x 57mm Mauser	2	307 Winchester	2
		308 Norma Magnum	4

<b>Caliber</b>	<b>Lube Die</b>	<b>Caliber</b>	<b>Lube Die</b>
308 Winchester	2	9 x 23mm Winchester	—
7.5mm x 54 French MAS	2	9.3 x 62mm Mauser	2
7.5mm x 55 Schmidt-Rubin	—	9.3 x 74Rmm	—
7.62 x 39mm .308/.311	3	375 H&H Magnum	4
7.62 x 54Rmm Russian .308/.311	—	375 Winchester	3
7.65 x 53mm Belgian Mauser	2	376 Steyr	4
7.7 x 58mm Japanese Arisaka	2	378 Weatherby Magnum	—
32 Automatic (7.65mm Auto)	—	38 Casull	2
32 H&R Magnum	—	38 Colt Super Auto	—
32 Smith & Wesson Long	—	38 Smith & Wesson	—
32 Winchester Special	3	38 Special	—
32-20 Winchester	—	380 Automatic (ACP)	—
32-40 Winchester	3	38-40 Winchester	—
8mm Lebel French Revolver	—	38-55 Winchester & Ballard	3
8mm Remington Magnum	4	40 S&W	—
8mm-06	2	40-65 Shiloh Sharps-408"	4
8 x 57mm Mauser (8mm Mauser)	2	400 CorBon	2
8 x 68Smm Magnum	—	405 Winchester	3
338 Lapua	—	10mm Auto	—
338 Remington Ultra Magnum	—	41 Magnum	4
338 Winchester Magnum	4	416 Remington Magnum	—
338-06	2	416 Rigby	—
338-378 Weatherby Magnum	—	44 Magnum	—
340 Weatherby Magnum	4	44 Special	—
348 Winchester	—	444 Marlin	—
35 Remington	3	44-40 Winchester	—
35 Whelen	2	45 Automatic (45 ACP)	2
350 Remington Magnum	4	45 Colt	—
356 TSW	—	45-70 U.S. Government	4
356 Winchester	2	450 Marlin	4
357 Magnum	—	454 Casull	—
357 Remington Maximum	—	458 Winchester Magnum	4
357 SIG	3	460 Weatherby Magnum	—
358 Winchester	2	475 Linebaugh 1.400"	—
9mm Luger	—	50 Action Express	—
9mm Makarov	—	50-70 U.S. Government	—
9 x 21	—		

## GENERAL INFORMATION

Lubricating cases prior to resizing is an important and necessary step in the reloading process. The use of the RCBS Lube Die eliminates the sometimes unpleasant method of lubricating cases by hand. With the Lube Die a cartridge is lubricated and decapped in a single motion.

- Faster and easier than hand lubricating
- Keeps hands clean when reloading
- Less handling of cases prior to reloading
- Standard  $\frac{7}{8}$ -14 thread fits most presses
- Easy to refill with RCBS Case Lube-2

The RCBS Lube Die can be use in single-stage presses or progressive reloading tools with a minimum of four stations.

There are four Lube Dies available. Each Lube Die lubes and decaps the case in one operation. See the Lube Die Compatibility Chart for the correct Lube Die to use.

The following instructions are for using the Lube Die in a progressive reloading tool with a minimum of four stations.

## PREPARING THE LUBE DIE

Lay the Lube Die on its side. Push the rubber seal ring toward the top of the



***Push the rubber seal ring up to expose the fill hole.***



***Fill the Lube Die with RCBS Case Lube-2.***

die until the fill hole in the die is exposed. Insert the top of the Case Lube-2 bottle in the fill hole and give the bottle one good squeeze to force the Case Lube-2 into the Die.

## **INSTALLING THE LUBE DIE**

The Lube Die is installed in the first station of the progressive reloading press. Allow about  $\frac{1}{32}$ " (approximately  $\frac{1}{2}$  turn) between the bottom of the Lube Die and the shell plate when the ram is at the top of the stroke. Position the lube fill hole toward the front of the press so that it is easily accessible when it's time to refill. The decapping pin should extend about  $\frac{3}{16}$ " below the bottom of the die. The Lube Die must sit in the press about 30 minutes to allow the Case Lube-2 to saturate the felt lubricating bushing. Leave the fill hole uncovered until the felt bushing is saturated with lubricant. Failure to allow time for the lubricant to saturate the felt bushing can result in a case being stuck in the sizer die.



***The decapping pin should extend  $\frac{3}{16}$ " below the bottom of the Lube Die.***

## INSTALLING THE RELOADING DIE SET

The sizer die should be installed at station 2. The expander-decapping unit in the sizer die must be backed up so that it will not decap the newly seated primer. Or, you can remove the decapping pin entirely. Powder charging should take place at station 3. The seater die should be installed in station 4.



***Adjust the decapping pin in the sizer die to avoid decapping the newly seated primer.***

## USING THE LUBE DIE

Cases must be properly lubricated prior to resizing or they will stick in the sizer die. Excessive lubricant will cause dented or collapsed shoulders on bottle neck cases. Before reloading, check the felt lubricating bushing for lubricant. This is easily done by running an unlubricated case into the Lube Die. Remove the case from the die and inspect it carefully. There should be a light film of lubricant all around the case with none on the case shoulder. If there appears to be an excessive amount of lubricant on the case, run several cases through the die to soak up the excessive lubricant. Wipe the cases clean with a damp cloth and repeat if necessary. When you are satisfied the proper level of lubrication has been obtained, you are ready to proceed with reloading.

One filling of the Lube Die with lubricant will last for 100 to 250 cases, depending on the case size. Add lubricant as soon as you detect increased sizing pressure and a noticeable absence of lubricant on the case.



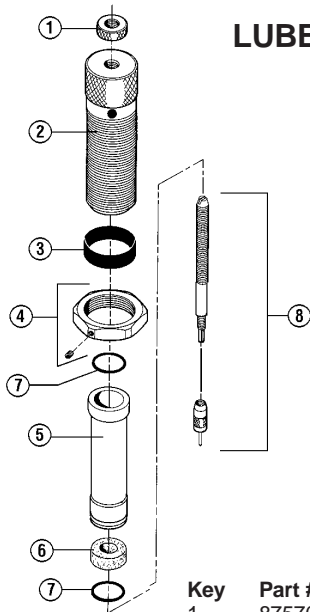
## LUBE DIE STORAGE

The die may be left in the reloading press or stored in its plastic storage box. The die should be stored in the vertical position when full of lubricant. A case must be left in the die to prevent lubricant leakage. Prior to using the die again, remove the case and follow the procedures outlined in "USING THE LUBE DIE." If excessive lubricant collects on the decapping unit, remove it from the die and wipe with a damp cloth.

### HELPFUL HINTS

- Do not over-fill the lube retainer with case resizing lubricant. As a general guide, squeeze (with light pressure) the Case Lube-2 bottle for 8 to 10 seconds when filling the lube retainer.
- Slide the rubber seal ring above the fill hole to increase the flow of lubricant while reloading.

## LUBE DIE PARTS LIST



Key	Part #	Description
1	87570	Hex Lock Nut 12-28
2	◆	Lube Die Body
3	87571	Seal Ring
4	87501	Die Lock Ring $\frac{7}{8}$ -14
5	87562	Lube Retainer (#1, 2 & 3)
5	87564	Lube Retainer #4
6	87556	Felt Lubricating Bushing #1
6	87557	Felt Lubricating Bushing #2
6	87558	Felt Lubricating Bushing #3
6	87559	Felt Lubricating Bushing #4
7	81015	"O" Ring Seal
8	87568	Lube Die Decapping Unit

◆ *Not available separately*

## PLASTIC AMMO BOXES FROM RCBS



How can anyone improve on something as basic as a plastic box? We figured out about eight ways and included them in five different sized ammo boxes. RCBS plastic ammo boxes offer unique features that make all others obsolete, including a one-piece hinge, recessed latch, label for identifying contents, interlocking tabs, flush exterior and more. Great for securely packing, storing, carrying and dispensing most popular rifle or pistol cartridges. See the chart below for part numbers and descriptions of the five different sizes.

<b>PART #</b>	<b>DESCRIPTION</b>
86901	AmmoBox, Small Rifle
86902	AmmoBox, Medium Rifle
86903	AmmoBox, Large Rifle
86905	AmmoBox, Medium Pistol
86906	AmmoBox, Large Pistol

See your local dealer or contact RCBS for further information.

# **RCBS**

**PRECISIONEERED® RELOADING EQUIPMENT**

*We think that we make the very best  
reloading equipment in the world.*

*If you agree, please tell your friends.*

*If you disagree, tell us - we want to do something about it!*

## **Customer Service**

**1-800-533-5000 (US or Canada) or 530-533-5191**

Hours: Monday - Thursday, 6:30am - 3:00pm (hours may vary)

e-mail: [rcbs.tech@atk.com](mailto:rcbs.tech@atk.com) • [www.rcbs.com](http://www.rcbs.com)

RCBS • 605 Oro Dam Blvd. • Oroville, CA 95965

CCI • SPEER • RCBS  
OUTERS • RAMLINE • ORBEX • FEDERAL

7200541/0304